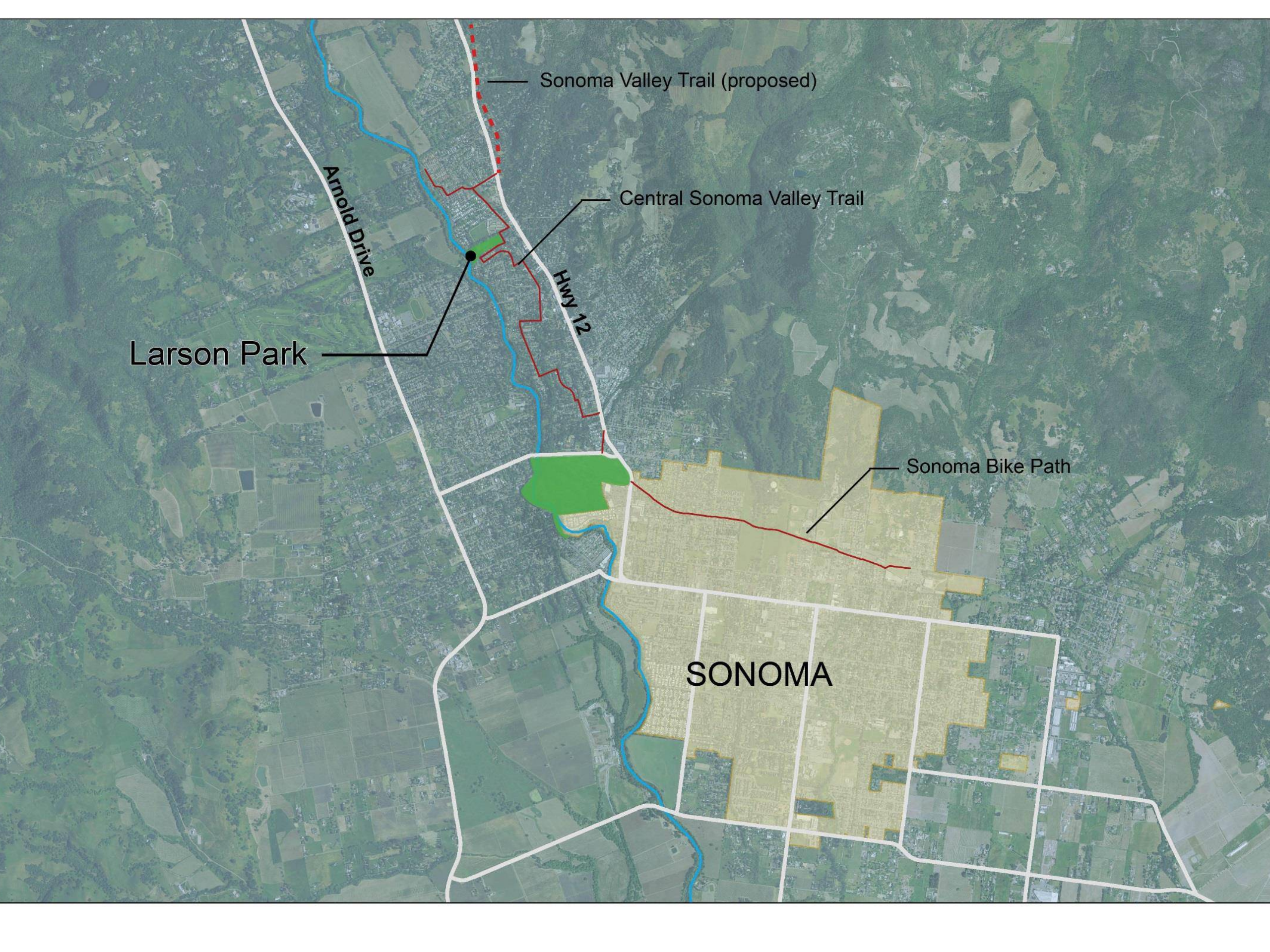


Larson Regional Park

Master Plan Update



Scott Wilkinson, Project Manager
Sonoma County Regional Parks
(707) 565-2734
scott.wilkinson@sonoma-county.org
www.sonomacountyparks.org



Sonoma Valley Trail (proposed)

Central Sonoma Valley Trail

Arnold Drive

Hwy 12

Larson Park

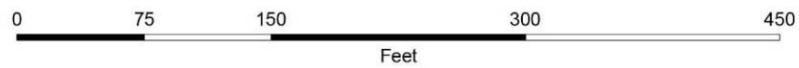
Sonoma Bike Path

SONOMA



Legend / Leyenda

- 1 Sonoma Creek
- 2 picnic area / zona de picnic
- 3 community garden / jardín comunitario
- 4 parking / estacionamiento
- 5 restroom building / edificio de baños
- 6 baseball field / campo de béisbol
- 7 tennis courts / canchas de tenis
- 8 ball walls / paredes de la bola
- 9 basketball court / cancha de baloncesto
- 10 play area / zona de juegos
- 11 soccer field / campo de fútbol
- 12 Pequeño Creek
- 13 pathway / vía
- 14 pathway to Flowery (future) / vía a Flowery (futuro)



LARSON PARK / EL PARQUE LARSON













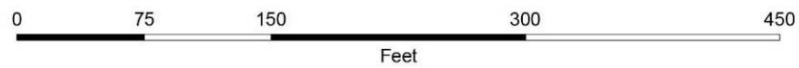




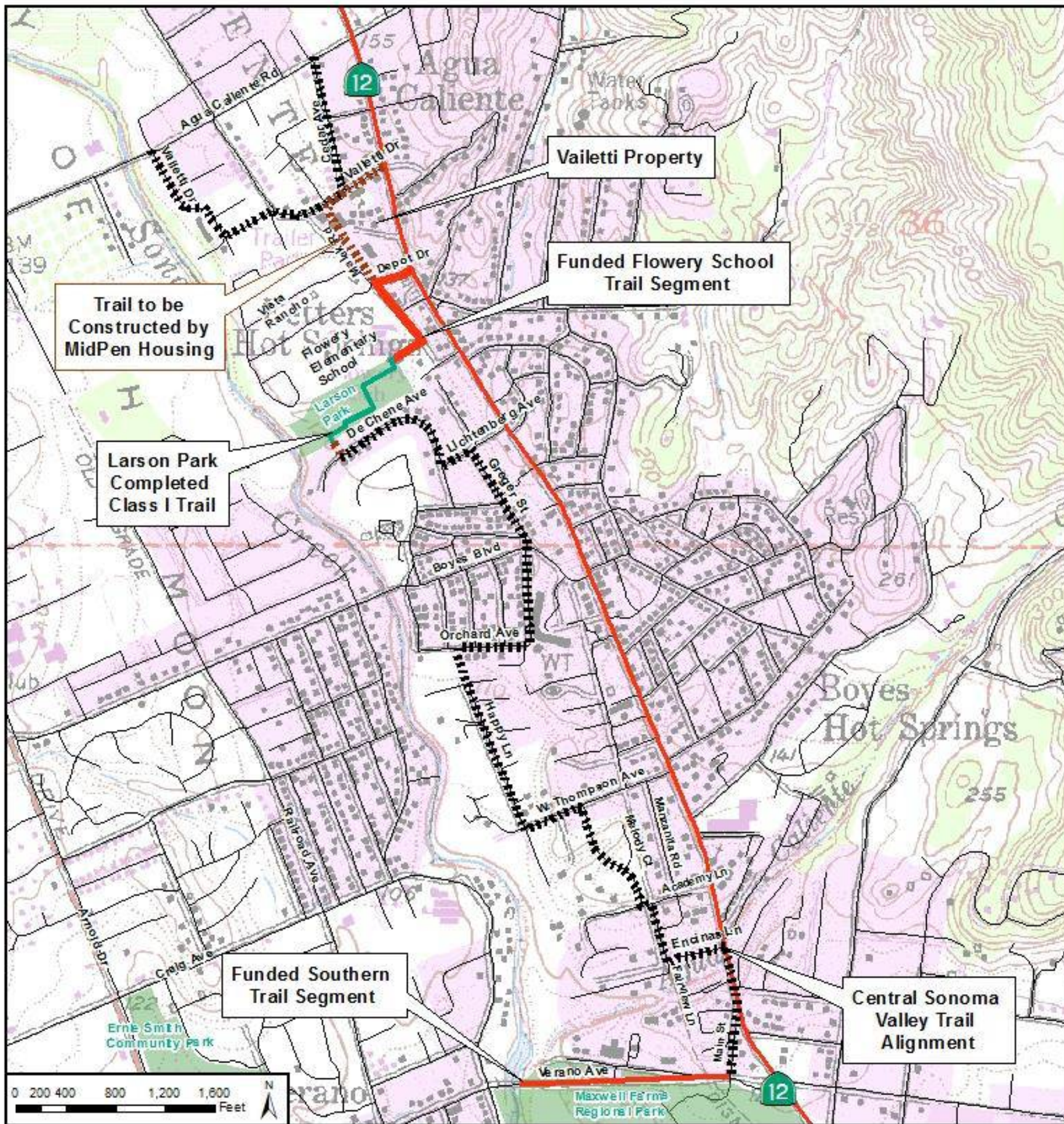


Legend / Leyenda

- 1 Sonoma Creek
- 2 picnic area / zona de picnic
- 3 community garden / jardín comunitario
- 4 parking / estacionamiento
- 5 restroom building / edificio de baños
- 6 baseball field / campo de béisbol
- 7 tennis courts / canchas de tenis
- 8 ball walls / paredes de la bola
- 9 basketball court / cancha de baloncesto
- 10 play area / zona de juegos
- 11 soccer field / campo de fútbol
- 12 Pequeño Creek
- 13 pathway / vía
- 14 pathway to Flowery (future) / vía a Flowery (futuro)



LARSON PARK / EL PARQUE LARSON



Central Sonoma Valley Trail Project Location Map

Sonoma County
Regional Parks



Source: Sonoma County ISD (GIS)
©Project/Central Sonoma Valley Trail/Agri/Central Sonoma Valley Trail 4 panel (R02) 4-14-14

Enlarged View to Left

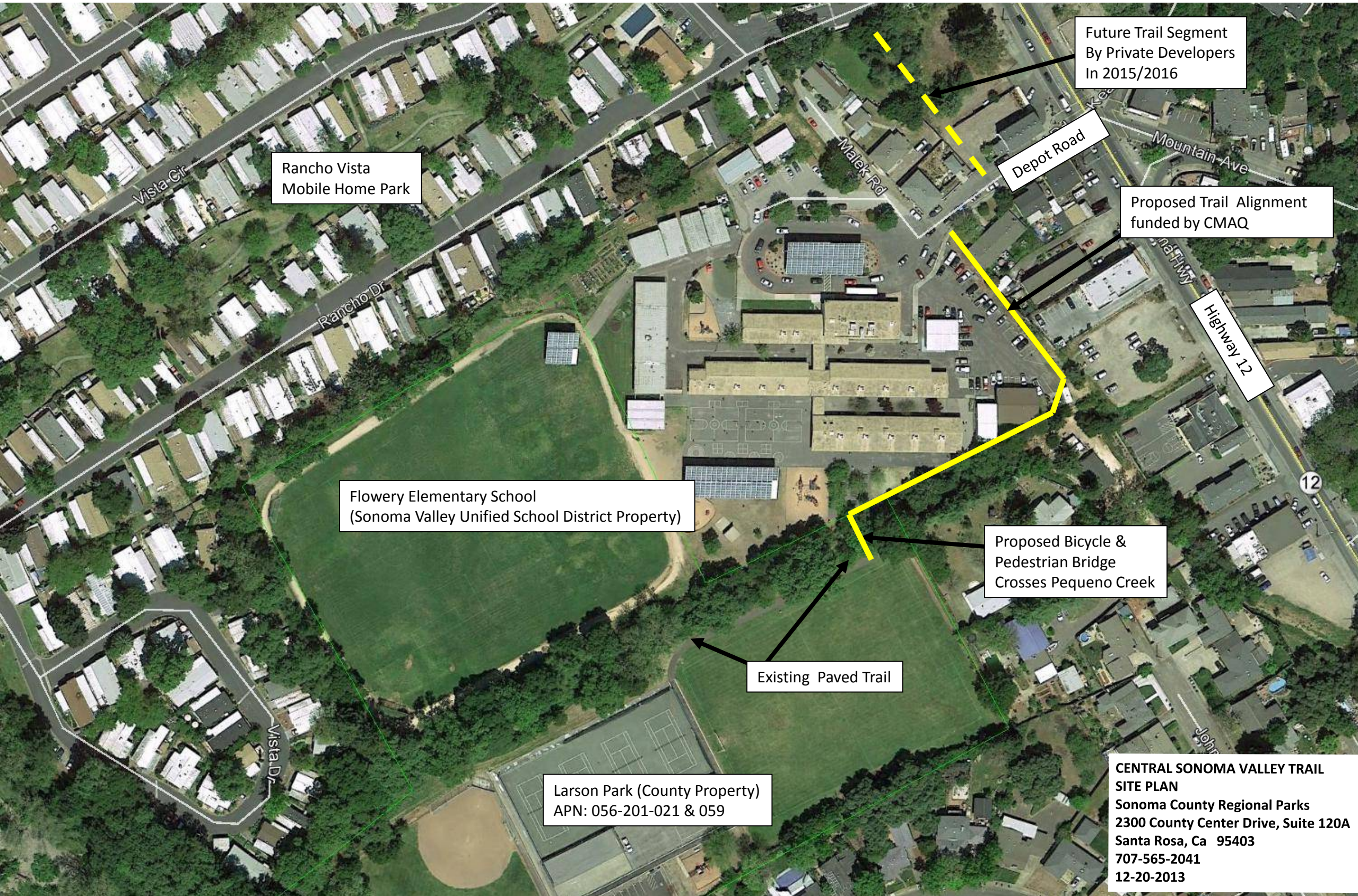


Sonoma County
Location Map



Bay Area
Location Map

Flowery School Trail Segment



Future Trail Segment
By Private Developers
In 2015/2016

Rancho Vista
Mobile Home Park

Depot Road

Proposed Trail Alignment
funded by CMAQ

Flowery Elementary School
(Sonoma Valley Unified School District Property)

Highway 12

Proposed Bicycle &
Pedestrian Bridge
Crosses Pequeno Creek

Existing Paved Trail

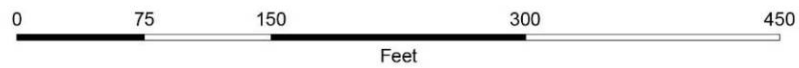
Larson Park (County Property)
APN: 056-201-021 & 059

**CENTRAL SONOMA VALLEY TRAIL
SITE PLAN**
Sonoma County Regional Parks
2300 County Center Drive, Suite 120A
Santa Rosa, Ca 95403
707-565-2041
12-20-2013



Legend / Leyenda

- 1 Sonoma Creek
- 2 picnic area / zona de picnic
- 3 community garden / jardín comunitario
- 4 parking / estacionamiento
- 5 restroom building / edificio de baños
- 6 baseball field / campo de béisbol
- 7 tennis courts / canchas de tenis
- 8 ball walls / paredes de la bola
- 9 basketball court / cancha de baloncesto
- 10 play area / zona de juegos
- 11 soccer field / campo de fútbol
- 12 Pequeño Creek
- 13 pathway / vía
- 14 pathway to Flowery (future) / vía a Flowery (futuro)



LARSON PARK / EL PARQUE LARSON

Planning Process:

- Identify park assets and park features and qualities that people like.
- Evaluate the issues and challenges facing the park.
- Determine the current and future needs of the community and develop a prioritized list of park improvements including ideas for new amenities, facilities and programs.
- Review and evaluate plan alternatives
- Create a new Master Plan with a cohesive vision responsive to community needs that balances natural resource values, parking needs, and safety to create an exciting and sustainable future for the park.