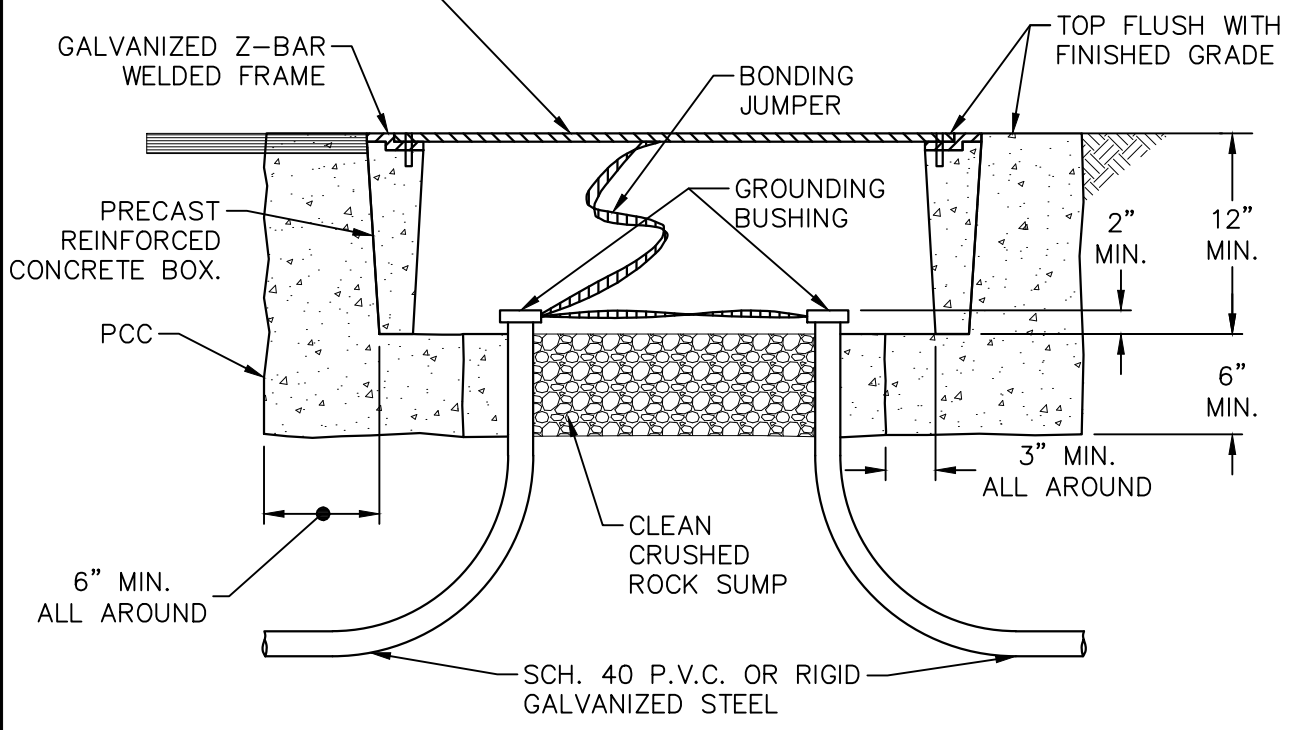


REINFORCED 1/2" MIN. STEEL PLATE COVER, GALVANIZED AFTER FABRICATION.

TOP VIEW



NO. 5(T) TRAFFIC PULL BOX

NOTES:

1. SEE CURRENT CALIFORNIA STATE STANDARD FOR FURTHER DETAILS.
2. GROUT BOTTOM OF PULL BOX PRIOR TO CONDUCTORS BEING INSTALLED.
3. GROUTED BOTTOM SHALL BE SLOPED DOWN TO 1" DRAIN HOLE.

COUNTY OF SONOMA
DEPARTMENT OF TRANSPORTATION
AND PUBLIC WORKS

PULL BOX INSTALLATION
NO. 5(T) PULL BOX

DATE: MAY 2004

REVISED: MAY 2018

APPROVED BY:

SCALE: NONE
DRAWING NO. 602