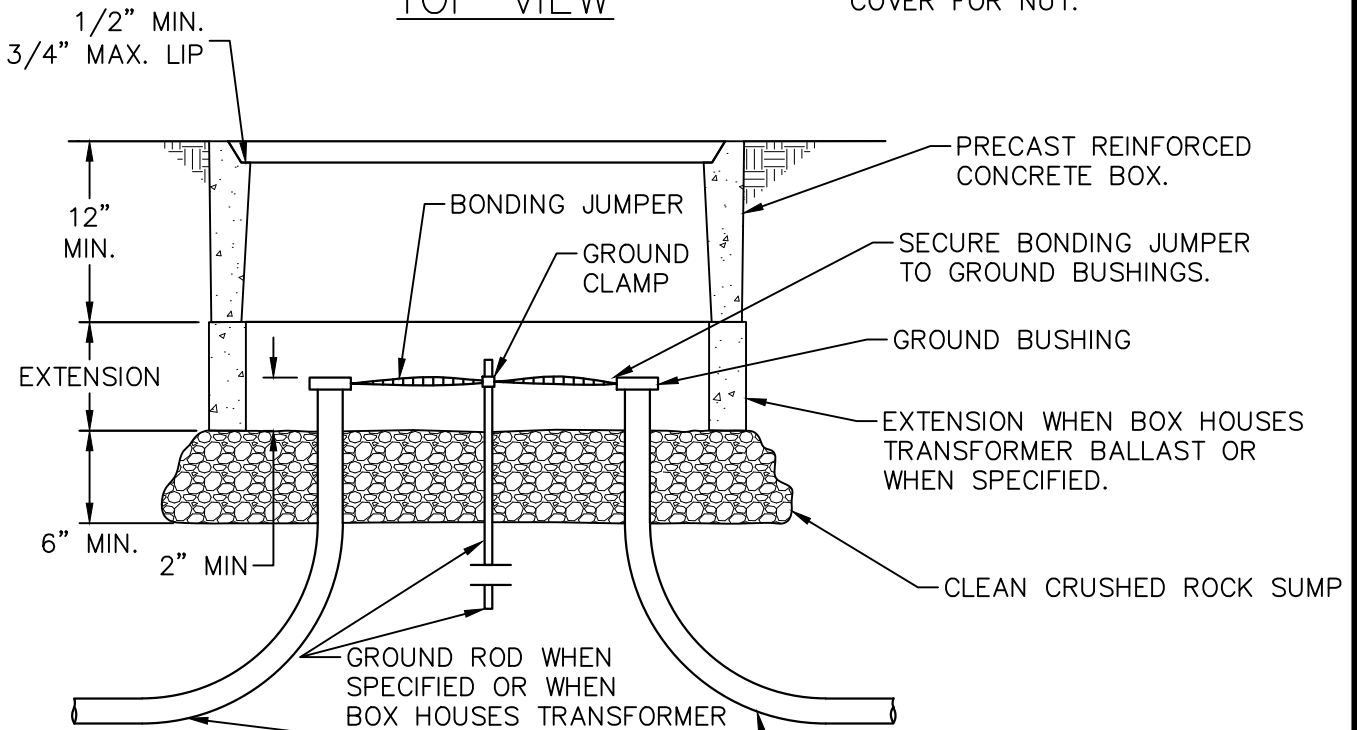


TOP VIEW

3/8" BRASS OR STAINLESS STEEL STUDBOLTS, NUTS AND WASHERS, 2 PER BOX. RECESS IN COVER FOR NUT.



NOTES:

- EXCEPT AS OTHERWISE DIRECTED BY THE COUNTY ENGINEER, CONSTRUCTION SHALL CONFORM TO THESE REQUIREMENTS AS WELL AS THOSE DETAILS SHOWN IN CALIFORNIA STANDARDS ES-8, UNLESS A 5(T) TRAFFIC PULL BOX IS REQUIRED (SEE NOTE 3).
- PULL BOX COVERS SHALL BE BOLTED AND INSCRIBED "STREET LIGHTING".
- PULL BOXES PLACED OUTSIDE OF CONCRETE SIDEWALK AREAS, CONCRETE MEDIAN ISLAND AREAS, AND PLANTED STRIP AREAS LOCATED BEHIND CURBS OR A.C. DIKES SHALL BE 5(T) TRAFFIC PULL BOXES WITH STEEL COVERS AND SPECIAL CONCRETE FOOTING. SEE DRAWING NO. 602 AND CURRENT CALIFORNIA STATE STANDARD.
- GROUT BOTTOM OF PULL BOX PRIOR TO CONDUCTORS BEING INSTALLED.
- GROUTED BOTTOM SHALL BE SLOPED DOWN TO 1" DRAIN HOLE.

COUNTY OF SONOMA  
DEPARTMENT OF TRANSPORTATION  
AND PUBLIC WORKS

PULL BOX INSTALLATION  
NO. 5 PULL BOX

DATE: MAY 2004

REVISED: MAY 2018

APPROVED BY:

SCALE:  
NONE

DRAWING NO.  
600