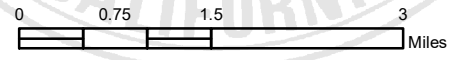
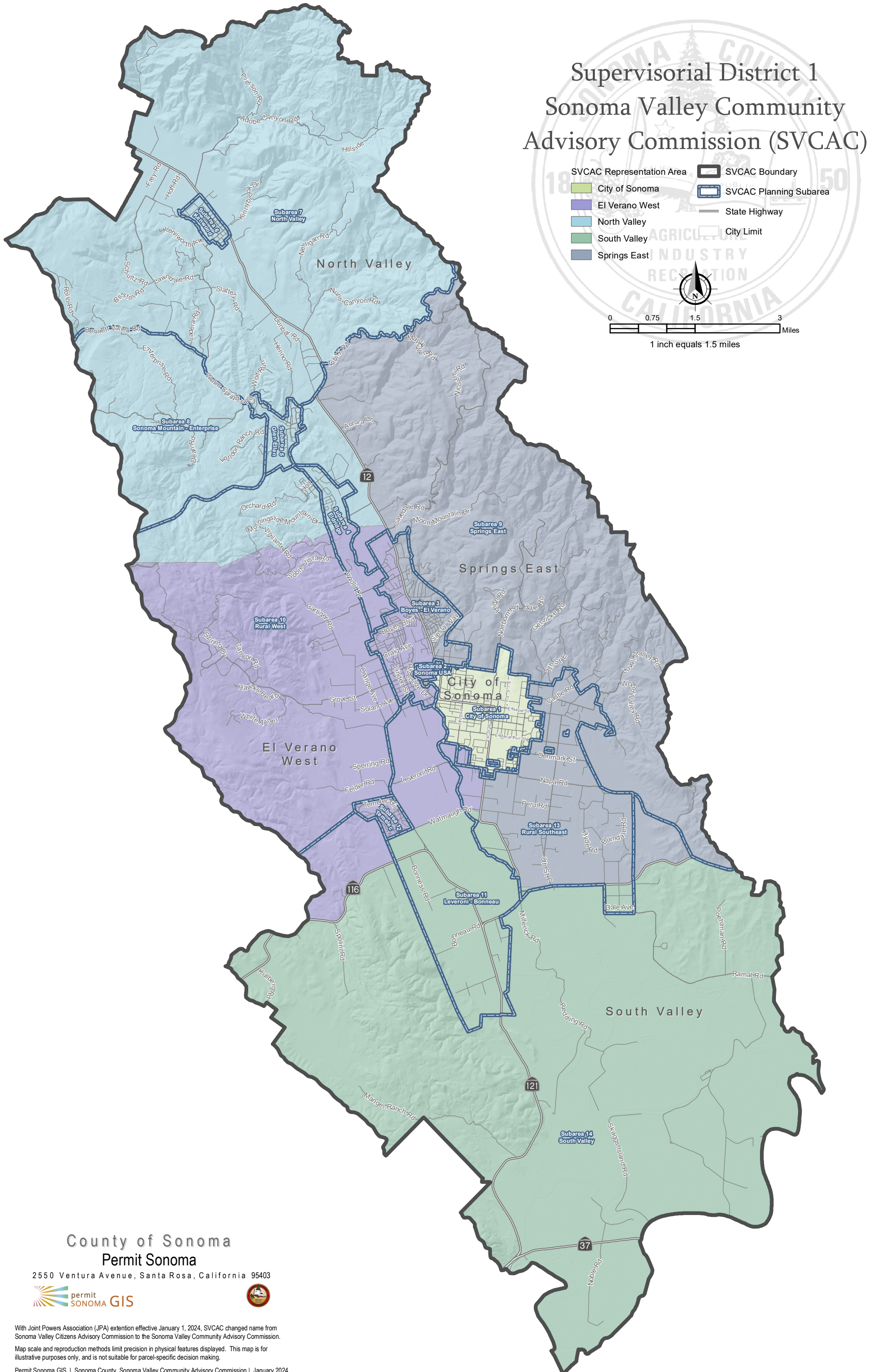


Supervisory District 1 Sonoma Valley Community Advisory Commission (SVCAC)

- SVCAC Representation Area
- City of Sonoma
- El Verano West
- North Valley
- South Valley
- Springs East
- SVCAC Boundary
- SVCAC Planning Subarea
- State Highway
- City Limit



1 inch equals 1.5 miles



County of Sonoma
Permit Sonoma

2550 Ventura Avenue, Santa Rosa, California 95403



With Joint Powers Association (JPA) extension effective January 1, 2024, SVCAC changed name from Sonoma Valley Citizens Advisory Commission to the Sonoma Valley Community Advisory Commission.

Map scale and reproduction methods limit precision in physical features displayed. This map is for illustrative purposes only, and is not suitable for parcel-specific decision making.

Permit Sonoma GIS | Sonoma County, Sonoma Valley Community Advisory Commission | January 2024