



ANNUAL REPORT

2015



 **sonoma county**
DEPARTMENT OF HEALTH SERVICES



ANNUAL REPORT 2015

A Message From The Director



Dear Members of the Community,

The Department of Health Services celebrated the year 2015 as a time of innovative collaborations. Department staff stepped up wherever they saw an opportunity to improve community well-being.

Together with fire and emergency services personnel, department employees aided Lake and Napa counties with animal rescue missions, nursing and behavioral health interventions during and after the Valley Fire. When our Sonoma County community wanted to address adverse childhood experiences, our Public Health staff partnered with schools, cities and community clinics to facilitate community resilience. In response to a pressing need for more early childhood education, the Sonoma County Board of Supervisors, First 5 Commissioners and Health Services employees collaborated with schools to put more pre-schools in our neighborhoods. Innovative collaboration also addressed services to mitigate mental illness: our Behavioral Health Division joined together with the Sheriff's Office and the County Administrator to apply for and receive an award that will create a new jail mental health facility, increasing the level of service for inmates affected by mental illness.

At a time of accelerating change in addressing health issues, the Department of Health Services employees and their partnering agencies are providing a high level of community engagement to increase the health and wellness of our neighbors, friends and family members. Thank you for reading this 2015 annual report that celebrates their accomplishments.

Best regards,

Stephan Betz, Director

Department Profile:

The Department of Health Services is supported by 711 people, which includes 600 allocated positions and a total budget of \$245.5 million. Department services are delivered through the Public Health, Behavioral Health, Health Policy, Planning and Evaluation and Administration Divisions.

Department Divisions

Department of Health Services Mission

To promote and protect the health and well-being of every member of the community

In partnership with the local health system, the Department of Health Services provides a wide range of programs and services for adults, children and families, as well as services supporting community health and safety, emergency medical preparedness, disease control, and clinical services. Services are provided by the Department's Public Health, Behavioral Health, and Health Policy, Planning and Evaluation Divisions, which serve the community through a combination of direct services and through a network of community-based contracts with treatment provider agencies.

Public Health

The Public Health Division monitors the health of the population, provides health care, educates about disease and injury prevention, and advances personal and population-based health programs and policies. The Division protects public health and the environment and promotes safety by eliminating or minimizing environmental health hazards through education, regulation and a cooperative working relationship with our community and partner agencies.



Behavioral Health

The Behavioral Health Division promotes the recovery and wellness of individuals with serious and persistent mental illness and substance use disorders through specialty mental health services, advocacy, and education. The goal of the Division is to provide services in partnerships with clients, families, other agencies, and community providers.

Health Policy, Planning and Evaluation

The Health Policy, Planning and Evaluation Division advances the work of the Department and its community partners in achieving the strategic goal of Sonoma County becoming the healthiest county in the state. The Division achieves this through collaboration with local stakeholders on prevention focused, evidence-based support of policy, systems and environmental changes that improve individual and community health by addressing the core determinants of health.



In addition, the **Administration Division** provides support to the divisions including personnel, facilities and fleet services, contracts and financing, compliance, and information technology services; **First 5 Sonoma County** includes early and preventative services in health, family support and improving the quality of early education to ensure optimal child development and to prepare children entering kindergarten to succeed.

Division Services: Facts and Results By The Numbers

Public Health: The Facts

Home Visiting programs (**Nurse Family Partnership, Teen Parent Connections, Field Nursing**) served 798 high-risk families facing multiple barriers to care by providing 6,202 visits and making over 10,000 referrals to community partners and resources.



The **Sonoma County Women, Infants and Children Supplemental Nutrition Program** served nearly 8,000 participants per month with nutrition/breastfeeding education and financial support to purchase healthy foods.



Animal Services issued 34,668 dog licenses, responded to 14,441 calls for service for animal-related issues, adopted out 1,189 homeless animals and returned 1,095 animals to their owners.



Public Health: The Results

Teen Parent Connections served over 250 pregnant and parenting adolescents. In FY 2014/15 Teen Parent Connections clients reduced alcohol use by almost 11%. Of all clients, 81% were engaged in school, and had a repeat birth rate of less than 5% compared to the state average of 22%. The percentage of Teen Parent Connections clients using long acting contraceptives was 65.5% compared to 4.5% nationally.



In collaboration with Community Action Partnership and First 5, the **Women, Infants and Children Dental Days program** celebrated 10,000 preventative child dental exams in June 2015, successfully lowering the number of caries in children and their siblings.



Information technology upgrades providing improved access to timely and accurate data for both staff and the public:

- Upgraded Environmental Health and Safety applications to support the new placarding program, the paperless inspection process, and new food inspection web site
- Upgraded Animal Services application to electronically enter animal behavioral assessments, better track and schedule volunteers, support electronic upload of rabies vaccinations from community veterinarians, and move towards paperless operations
- Implemented robust document management solution for Medical Therapy Program

Division Services: Facts and Results By The Numbers

Behavioral Health: The Facts

The **Mobile Support Team** is staffed by specially trained licensed behavioral health professionals.

Mobile Support Team staff respond to law enforcement requests. Once the scene is secured, the Mobile Support Team staff provide mental health and substance use disorders interventions to individuals experiencing a behavioral health crisis.



The **Crisis, Assessment, Prevention, and Education Team** is an early intervention strategy specifically designed for youth aged 16 to 25, who may be experiencing their first mental health crisis. Training and education services are provided to students as well as school personnel.



Health Policy, Planning and Evaluation: The Facts

Project SUCCESS PLUS (Schools Using Coordinated Community Efforts to Strengthen Students), operating in six school districts in Sonoma County, provides students, parents, and school personnel resources and support to promote mental health and to prevent substance use disorders in students.



The **Safe Routes to School Program** provides bike rodeos and workshops to improve the safety and increase number of youth walking and biking to school.

Health Policy, Planning and Evaluation: The Results

Last year 3,165 students participated in individual, group, and classroom sessions, through Project SUCCESS PLUS (Schools Using Coordinated Community Efforts to Strengthen Students). More than three-quarters of the students who participated in groups identified they felt more connected to their school.



In FY2015/16 More than 10,000 students and families across 30 Sonoma County elementary, middle, and high schools received education and encouragement through the Safe Routes to School Program.



A Tobacco Retail License aimed at reducing youth tobacco use was passed by the Sonoma County Board of Supervisors. The Tobacco Retail License ordinance designates local authority to regulate tobacco retailers in unincorporated Sonoma County. The ordinance will limit new retailers, especially near schools, and will set a \$7 minimum price on a pack of cigarettes.

Behavioral Health: The Results

In FY 2015/16, the Mobile Support Team provided services to approximately 675 unique individuals and approximately 1,260 referrals to those seeking services within the County of Sonoma.



In FY 2015/16, the Crisis, Assessment, Prevention, and Education Team provided approximately 220 trainings to approximately 6,230 individuals in Question, Persuade, and Respond education, which is designed to train people on how to recognize the warning signs of a suicide crisis and how to question, persuade, and refer someone to help.

Achievements 2015



The Sonoma County Department of Health Services is committed to reducing disparities in health, access to knowledge and living standards within the Sonoma County community. Department activities are aligned with the *Agenda for Action* recommendations of the community health assessment *A Portrait of Sonoma County: Sonoma County Human Development Report 2014*. On these two pages we share our successes.

First 5 Sonoma County and the Sonoma County Board of Supervisors invested \$655,000 in a Facilities Grant program to secure long term leases for preschool facilities across the county. This avoided the loss of 272 state and federal preschool seats and allowed an expansion of an additional 48 seats while leveraging \$2.9 million in annual state and federal preschool contracts.



The Health Policy, Planning and Evaluation Division, with the Institute for Child Success, and **Health Action** collaborated to complete a feasibility study on Pay for Success financing to expand access of high quality preschool to three and four year olds in the *Portrait of Sonoma County* priority neighborhoods.

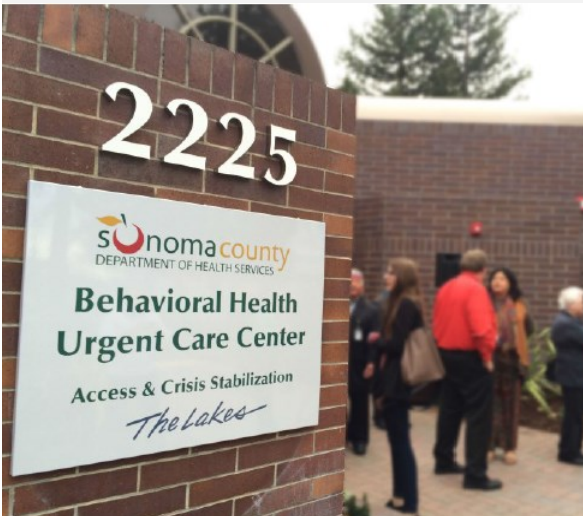
Our **Public Health Division** has been recognized for its efforts to address the lifelong impacts that Adverse Childhood Experiences have on brain development, health, and behavior. With funding from the **Mobilizing Action for Resilient Communities Grant**, we will build on the success of the Sonoma County Adverse Childhood Experiences Connection to expand community-wide education and promote strategies to prevent and reduce adverse childhood experiences.



The **Sonoma County Women, Infants and Children Supplemental Nutrition Program** received the Loving Support Award of Excellence from the United States Department of Agriculture for exceptional exclusive breastfeeding rates. The program boasts a rate of 40% for exclusive breastfeeding, far exceeding breastfeeding rates for state and national Women, Infants and Children's agencies (20.1% and 12.8% respectively).

Achievements 2015

The **Moorland Healthy Neighborhood Plan** was created through a Community Transformation Grant. Health Services in partnership with Regional Parks secured Moore Iacofano Goltsman, Incorporated Consulting and Community Action Partnership to support Moorland residents in the development of the Moorland Healthy Neighborhood Plan. Through the planning process residents identified issues and assets in the neighborhood, and created a set of priority strategies and recommendations for place-based interventions that will lead to a healthier and safer neighborhood.



A **Behavioral Health Urgent Care Center** was created as part of a successful Mental Health Crisis Facility Grant application through the State's Mental Health Wellness Act of 2013. The **Sonoma County Behavioral Health Division** leased and renovated a facility located at 2225 Challenger Way (The Lakes Campus), providing Access and Crisis Stabilization Unit services. The new Behavioral Health Urgent Care Center opened in February and is expected to expand to 24 beds in FY 2016/17.



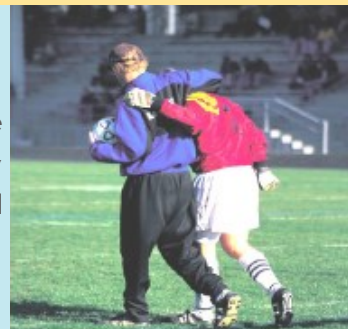
The **Bridge to Health Program** was launched at Adult Outpatient Behavioral Health Services at Chanate Hall. The program serves to integrate primary health care for Sonoma County Behavioral Health clients who have severe, persistent mental illness, and who often need education and support accessing and navigating the medical care system to help them manage multiple complex medical issues, prevent illness, and improve overall health. To date, the program currently has over 190 clients enrolled.



Behavioral Health partnered with the Sheriff's and CAO's office to submit a grant application to create a **new mental health unit at the Main Adult Detention Facility**. Sonoma County was awarded \$40,000,000 to build a modern 72 bed facility for inmates. Construction is anticipated to take two to five years.



The **Coaching Boys Into Men** program successfully engaged over 330 young male athletes in 12 Sonoma County schools last year, creating a culture of respect by coaching young men to recognize abuse, avoid the behavior, hold their peers accountable, and prevent violence.



Health Services In Action

The Sonoma County Farmworker Health Survey

In October 2015 the Department of Health Services released the first-ever study of local farmworkers' health and well-being. The Sonoma County Farmworker Health Survey was a survey of 293 farmworkers in Sonoma County between September 2013 and January 2014, which aimed to describe the health and well-being of farmworkers in Sonoma County. The key findings of the survey included: the majority of farmworkers are permanent residents of Sonoma County and live with their families; farmworker families live in unaffordable and overcrowded housing conditions in Sonoma County; nearly all local farmworker families earn insufficient incomes to meet their family's basic needs; due to limited health insurance coverage, farmworkers have restricted access to preventative and medical care; and farmworkers experience significant health disparities here in the County.



The Covered Sonoma County workgroup is using the findings of the Farmworker Health Survey to inform the development of their key priority areas around providing coverage and support for the remaining uninsured populations in the Sonoma County.

The Department is also partnering with the Sonoma County Winegrowers to help develop new programs and strategies to support their workers.

Health Action is using the Farmworker Health Survey to inform strategy development in its three subcommittees: Cradle to Career, Committee for Healthcare Improvement, and Economic Wellness. Specific to the local farmworker population, the strategies include focusing on expanding access to high-quality early childhood education and family engagement in the areas of highest need, as well as partnering with local schools and clinics to ensure comprehensive approaches to health improvement within and outside health care delivery systems. Additionally, Health Action partners with agencies to work on affordable and workforce housing, along with interventions to support holistic approaches to eliminating homelessness. This work draws on the Farmworker Health Survey report to focus on the most vulnerable populations and places in our community.

HEALTH ACTION
A 2020 VISION FOR SONOMA COUNTY

Health Services In Action



The Valley Fire Response

Last fall the tragic Valley Fire devastated Lake County. The Department of Health Services was strategically poised to assist the residents of Lake County with disaster relief through its divisions and programs. Thanks to our staff and volunteers for making a difference.

Saturday, September 12, 2015 (the day the fire started): Public Health assistance began. Sonoma County Animal Services was contacted by Lake County Animal Care and Control with a request to provide animal control services. Sonoma County Animal Services officers moved into action, spending nearly 24 hours straight searching devastated areas for any animals needing assistance, often putting themselves right in the center of active fire areas. Sonoma County Animal Services officers also took over the daily support activities for Lake County, freeing their officers to work directly with displaced residents and animals. Coastal Valleys Emergency Medical Services Agency assisted in shelter assessment and provided Emergency Operations Center support for the Medical-Health response. Staff worked two operational periods with some relief coverage on a third, supporting the resource request process, creating situation reports, and supporting responders on several occasions at a shelter location.

Tuesday, September 15th: The first teams of Medical Reserve Corps volunteer nurses and Public Health Preparedness staff deployed to two shelters in Lake County.

Wednesday, September 16th: Public Health Nurses from Children's Medical Services, Disease Control, Nurse-Family Partnership, and Human Services Programs (Adult & Aging; In-Home Supportive Services; Multi-Purpose Senior Services; and Family, Youth & Children) began deploying to Lake shelters, providing first aid and other medical care, assisting with prescriptions, and providing support with daily living activities.

Thursday, September 17th: Behavioral Health staff from the Crisis, Assessment, Prevention, and Education Team, Community Intervention Program, and Mobile Support Team scheduled their clinicians for regular shelter duty at both Lake and Napa County locations. From September 17th through November 2nd, Behavioral Health provided continual clinical services, demonstrating the kind of sustained commitment that it takes for survivors to be able to manage and recover from disaster.

Over the seven weeks of active response efforts, Department of Health Services staff and volunteers responded as follows:

Quick Facts

- The Department of Health Services was the 2nd largest departmental response after the Sheriff's Department
- Department of Health Services: 40 employees responded for a total of 826 hours
- Animal Services: 32 deployments from 9/13 to 9/27
- Public Health Nurses: Eight deployments from 9/15 to 9/20
- Public Health Preparedness: Three deployments from 9/13 to 9/17
- Coastal Valleys Emergency Medical Services Agency: Four deployments from 9/13 to 9/16
- Behavioral Health: 35 deployments from 9/17 to 11/2
- Seven Medical Reserve Corps volunteers: Nine deployments from 9/15 to 10/29, 172 hours

Moving Forward 2016



The Sonoma County Department of Health Services continues to leverage the findings of *A Portrait of Sonoma County* and its *Agenda for Action* recommendations. The coming year holds many exciting prospects for our services and the community.

The Department of Health Services will continue to support 30 Sonoma County elementary, middle and high schools to sustain **Safe Routes to School** education and encouragement activities in order to empower more youth and families to walk or bike to school in order to improve traffic safety around schools and improve student health.



Nineteen **Supplemental Nutrition Assistance Program Education** early care sites will focus on creating sustainable Farm to Preschool nutrition education and Coordinated Approach To Child Health activities by developing site and organizational policies intended to institutionalize programs and support the health of children ages two to five years old.

On June 1, 2016 **Environmental Health and Safety** will launch the new **color-coded inspection and placarding system** for food facilities to promote transparency of food safety information to the public. Environmental Health will post a color-coded placard (green-pass, yellow-conditional and red-closed) at all food facilities showing results of the facility's most recent inspection. Food facility inspection results can be found on the Food Facilities Inspection Results webpage: <http://sonomacounty.ca.gov/Health/Environmental-Health/Food-Program/Inspection/Inspection-Results/>.



The Behavioral Health Division will be undertaking a major overhaul of **Avatar**, its Electronic Health Record software program. Improvements will include electronic medication prescribing, advanced centralized scheduling, and enhanced clinical applications.



The **Drug Medi-Cal Organized Delivery System Expansion** plan will be implemented beginning in FY 2016/17.

Moving Forward 2016

Local Wellness Fund: The Department of Health Services will partner with the Health Action Council to develop momentum and support for a local Wellness Fund meant for prevention focused strategies that are being developed through Health Action and to explore new and innovative ways to finance this work.



Accountable Communities for Health: In collaboration with community partners, the Department of Health Services seeks to develop and implement an “Accountable Communities for Health” model in Sonoma County to bring together key sectors and partners—from the community to the health care delivery system—in order to collectively advance common health goals. This model builds on prior efforts to coordinate and integrate various organizations, programs and services by linking their activities together in a coherent and reinforcing portfolio of interventions across broad systems of health.



Place-Based Services Initiative

In conjunction with the County’s General Services Department, the Behavioral Health Division has begun to explore the possibility of moving some of its approximately 40 programs to neighborhoods where they can be more accessible following the recommendations of the County General Plan to provide place-based services. With support from the Board, the Division is currently looking to place services nearer to Roseland and at a proposed new Human Services site in Petaluma.



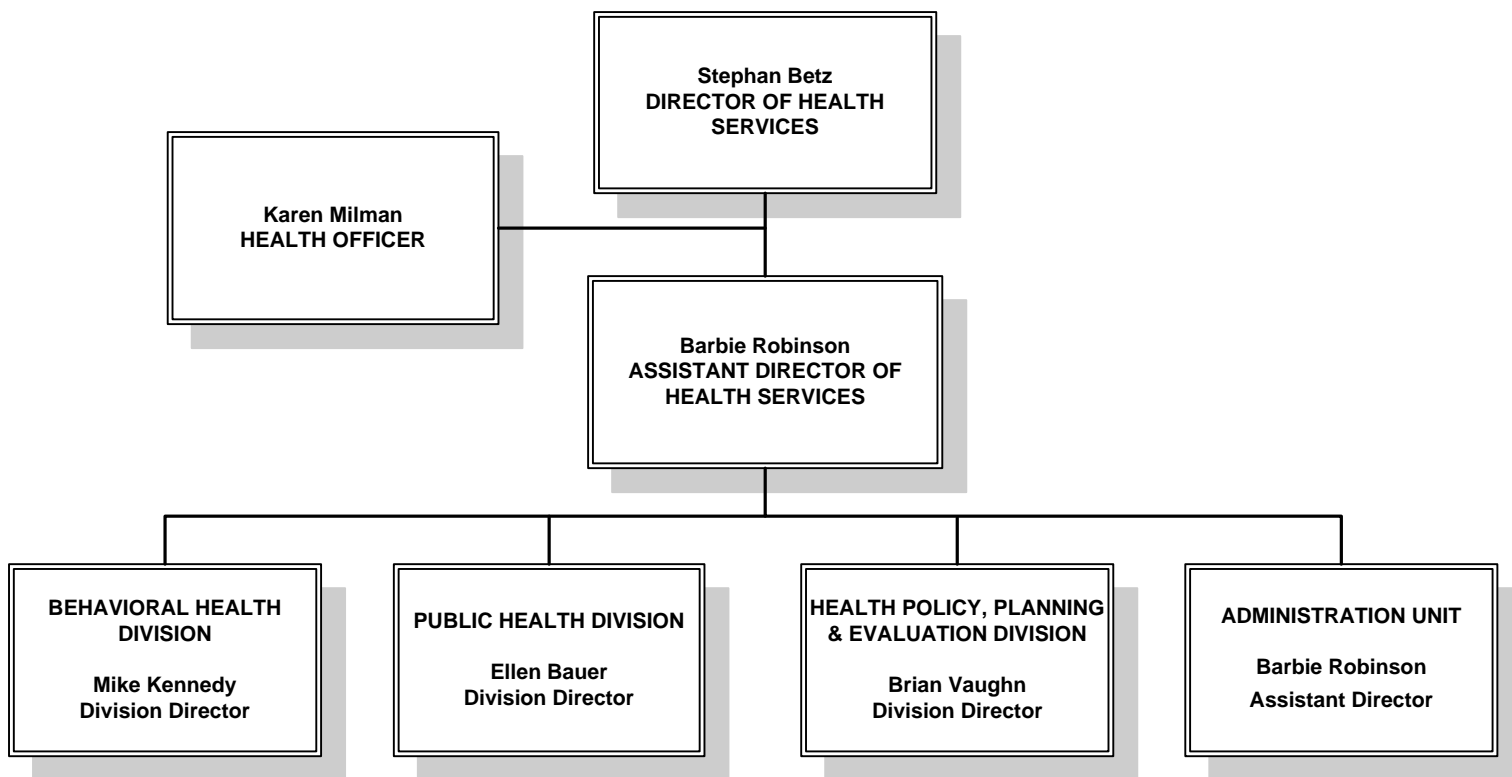
As part of its **Workforce, Education, and Training Program** Goal Expansion, the Sonoma County Behavioral Health Division will work with the community based organization Goodwill Industries of the Redwood Empire Consumer Relations Program to train and retain mental health consumers in the mental health workforce.

Public Health is working to expand support for low-income families during pregnancy and the first two years of life through its portfolio of home visiting programs. The **Nurse Family Partnership** team is actively working to increase their skills in goal setting with clients to better meet its third objective of increasing client’s economic self-sufficiency. **Teen Parent Connections** looks forward to the outcomes of a federal evaluation focused on positive youth development where the program has already exceeded its participation goals. **Field Nursing** is implementing an electronic data collection system within their Electronic Medical Record system to allow for comprehensive tracking and reporting of outcomes.



In collaboration with Save Lives Sonoma, the **Coastal Valley Emergency Medical Services Agency** continues its effort to reach every seventh grade student in Sonoma County with education and training on lifesaving CPR skills every year. As part of the Save Lives Sonoma program Coastal Valleys Emergency Medical Services Agency successfully placed Automated External Defibrillators in 70% of the Sonoma County schools in 2015.

Department of Health Services Organizational Chart



[Click here](#) to view the full organizational chart and learn more about the structure of each division.

The organizational chart may also be accessed at: www.sonoma-county.org/health/about.



Where To Find Us

For general assistance, please call 707.565.4700 or visit us at: www.sonoma-county.org/health

Administration

3313 Chanate Road
Santa Rosa, CA 95404
707.565.4700

Including:

- Finances
- Human Resources/Payroll
- Safety/Training
- Compliance/Risk Management
- Procurement, Contracts
- Facilities
- Information Technology
- Privacy/Security

Health Policy, Planning and Evaluation

490 Mendocino Avenue, Suite 101
Santa Rosa, CA 95401
707.565.6680

Including:

- Program, Planning and Support
- Policy, Strategy and Evaluation
- Information Technology
- Healthy Communities
- First 5 Sonoma County

Public Health

625 Fifth Street
Santa Rosa, CA 95404
707.565.4400

Including:

- Public Health Laboratory
- Environmental Health
- Women, Infants and Children
- Animal Services

Behavioral Health

3322 Chanate Road
Santa Rosa, CA 95404
707.565.4850

Including:

- 24/7 Mental Health Crisis Services
- Psychiatric Emergency Stabilization
- Youth & Family Services
- Wellness & Advocacy Center
- Substance Use Disorder and Recovery Services
Orenda Center

For More Information On Services In Your Community:

<http://sonomacounty.ca.gov/Health-Services/>



Prepared by the:



May 2016

3313 Chanate Road

<http://sonomacounty.ca.gov/Health-Services>

Santa Rosa, CA 95404

<http://www.healthysonoma.org>

707.565.4700



Like us at: <https://www.facebook.com/SonomaCountyDHS>