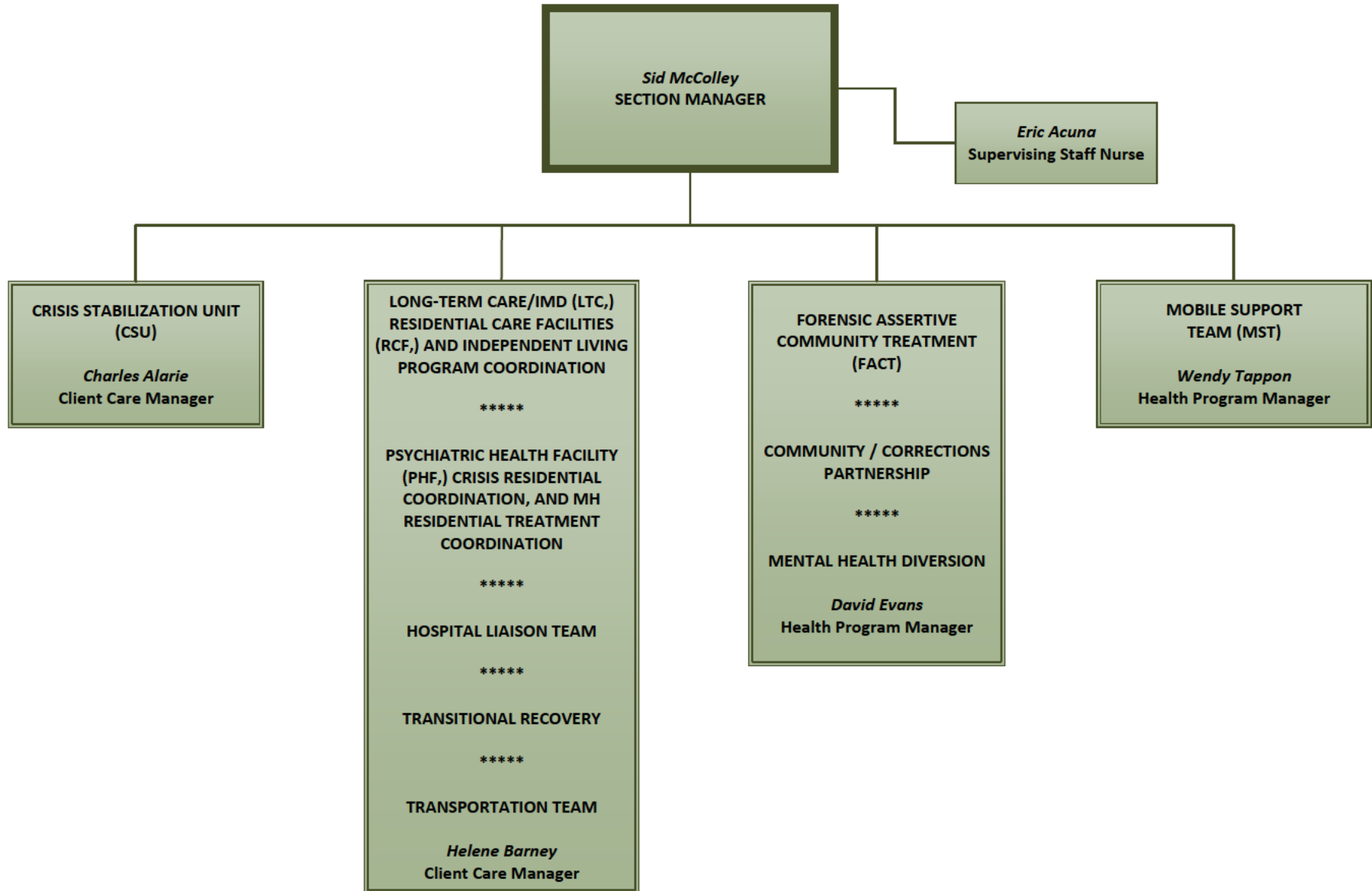




ACUTE & FORENSIC SERVICES

Director: Tina Rivera
Issue Date: May 31, 2022
(Organizational Chart)



Acute & Forensic Services

- Sid McColley, Section Manager
 - Eric Acuna, Supervising Staff Nurse
 - Crisis Stabilization Unit (CSU): Charles Alarie, Client Care Manager
 - Long-Term Care/IMD (LTC,) Residential Care Facilities (RCF,) and Independent Living Program Coordination; Psychiatric Health Facility (PHF,) Crisis Residential Coordination, and MH Residential Treatment Coordination; Hospital Liaison Team; Transitional Recovery *****
Transportation Team: Helene Barney, Client Care Manager
 - Forensic Assertive Community Treatment (FACT); Community/Corrections Partnership; Mental Health Diversion: David Evans, Health Program Manager
 - Mobile Support Team (MST): Wendy Tappon, Health Program Manager

*CST: Civil Service Title