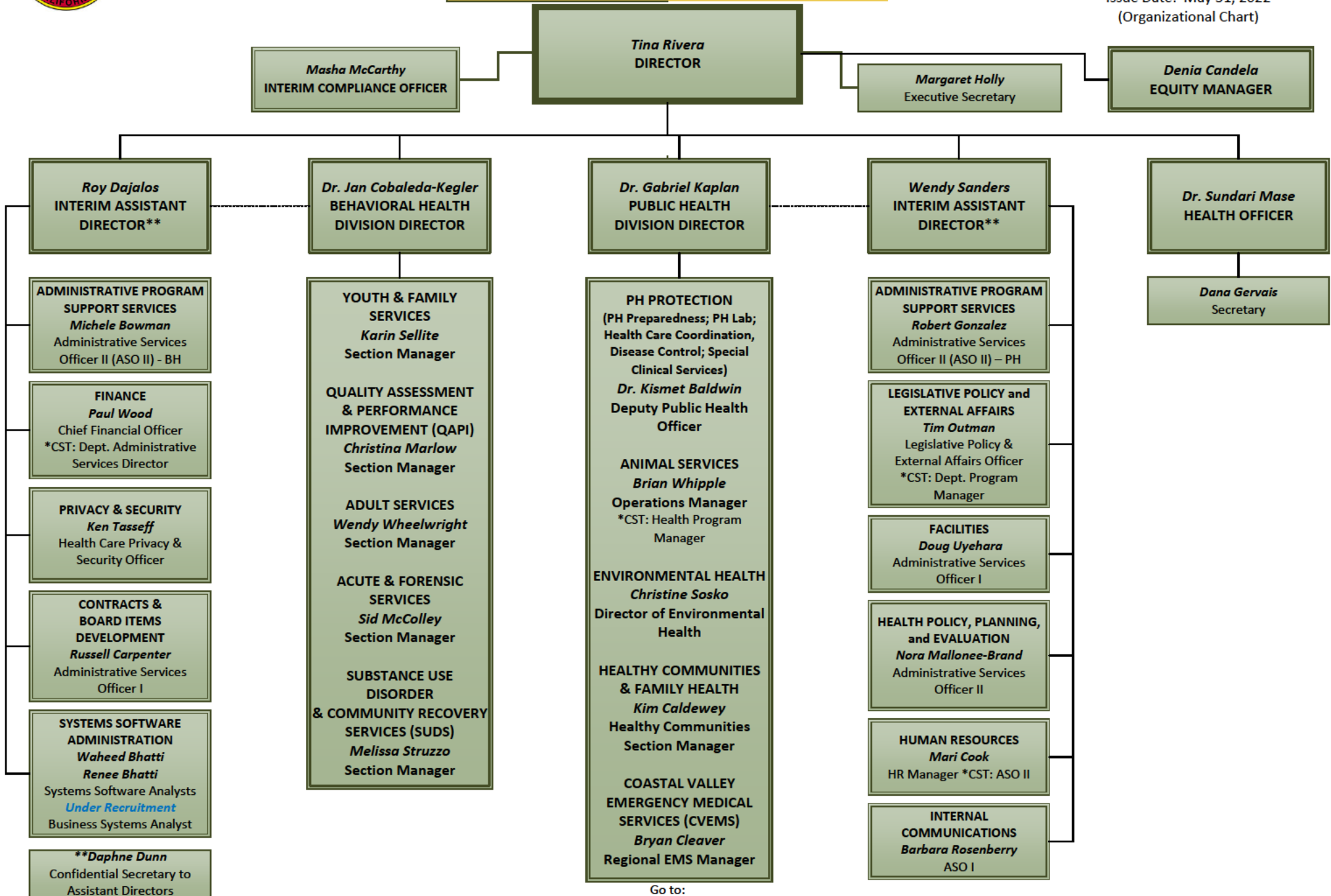




DHS ADMINISTRATION

Director: Tina Rivera
Issue Date: May 31, 2022
(Organizational Chart)



Go to:

DHS Main BH Main PH Main

Solid line: Direct Report Dashed line: Collaboration

DHS Administration

- Tina Rivera, Director
 - Masha McCarthy, Interim Compliance Officer
 - Denia Candela, Equity Manager
 - Margaret Holly, Executive Secretary
 - Roy Dajalos, Interim Assistant Director**
 - Administrative Program Support Services: Michele Bowman, Administrative Services Officer II (ASO II) - BH
 - Finance: Paul Wood, Chief Financial Officer *CST: Dept. Administrative Services Director
 - Privacy & Security: Ken Tasseff, Health Care Privacy & Security Officer
 - Contracts & Board Items Development: Russell Carpenter, Administrative Services Officer I
 - Systems Software Administration: Waheed Bhatti, Renee Bhatti, Systems Software Analysts; Under Recruitment, Business System Analyst
 - **Daphne Dunn, Confidential Secretary to Assistant Directors
 - Dr. Jan Cobaleda-Kegler, Behavioral Health Division Director
 - Youth & Family Services: Karin Sellite, Section Manager
 - Quality Assessment & Performance Improvement (QAPI): Christina Marlow, Section Manager
 - Adult Services: Wendy Wheelwright, Sections Manager
 - Acute & Forensic Services: Sid McColley, Section Manager
 - Substance Use Disorder & Community Recovery Services (SUDS): Melissa Struzzo, Section Manager
 - Dr. Gabriel Kaplan, Public Health Division Director
 - Public Health Protection (PH Preparedness; PH Lab; Health Care Coordination; Disease Control; Special Clinical Services): Dr. Kismet Baldwin, Deputy Public Health Officer
 - Animal Services: Brian Whipple, Operations Manager *CST: Health Program Manager
 - Environmental Health: Christine Sosko, Director of Environmental Health
 - Healthy Communities & Family Health: Kim Caldewey, Healthy Communities Section Manager
 - Coastal Valleys Emergency Medical Services Agency (CVEMS): Bryan Cleaver, Regional EMS Manager
 - Wendy Sanders, Interim Assistant Director **
 - Administrative Program Support Services: Robert Gonzalez, Administrative Services Officer II (ASO II) - PH
 - Legislative Policy and External Affairs: Tim Outman, Legislative Policy & External Affairs Officer *CST: Dept. Program Manager
 - Facilities: Doug Uyehara, Administrative Services Officer I
 - Health Policy, Planning, and Evaluation: Nora Mallonee-Brand, Administrative Services Officer II
 - Human Resources: Mari Cook, HR Manager *CST: ASO II
 - Internal Communications: Barbara Rosenberry, ASO I
 - Dr. Sundari Mase, Health Officer
 - Dana Gervais, Secretary

*CST: Civil Service Title