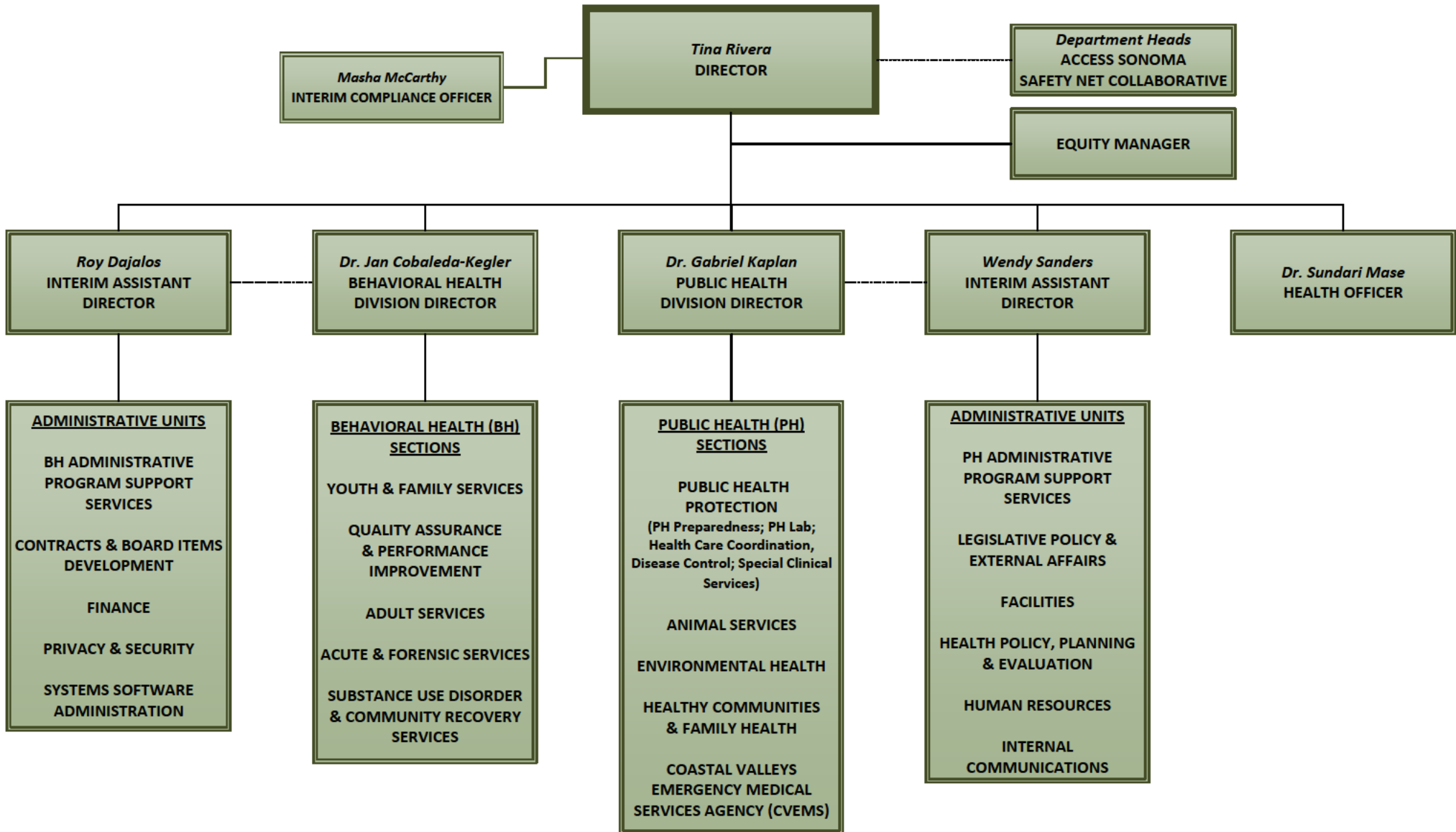




DEPARTMENT OF HEALTH SERVICES

Director: Tina Rivera
Issue Date: May 31, 2022
(Organizational Chart)



*CST: Civil Service Title

Solid line: Direct Report Dotted line: Collaborative Role

Department of Health Service

- Tina Rivera, Director
 - Department Heads, Access Sonoma Safety Net Collaborative (Collaborative Relationship)
 - Equity Manager
 - Masha McCarthy, Interim Compliance Officer
 - Roy Dajalos, Interim Assistant Director
 - Administrative Units
 - BH Administrative Program Support Services
 - Contracts & Board Items Development
 - Finance
 - Privacy & Security
 - Systems Software Administration
 - Dr. Jan Cobaleda-Kegler, Behavioral Health Division Director
 - Behavioral Health Sections
 - Youth & Family Services
 - Quality Assurance & Performance Improvement
 - Adult Services
 - Acute & Forensic Services
 - Substance Use Disorder & Community Recovery Services
 - Dr. Gabriel Kaplan, Public Health Division Director
 - Public Health Sections
 - Public Health Protection
 - PH Preparedness
 - PH Lab
 - Health Care Coordination
 - Disease Control
 - Special Clinical Services
 - Animal Services
 - Environmental Health
 - Healthy Communities & Family Health
 - Coastal Valleys Emergency Medical Services Agency (CVEMS)
 - Wendy Sanders, Interim Assistant Director
 - Administrative Units
 - PH Administrative Program Support Services
 - Legislative Policy & External Affairs
 - Facilities
 - Health Policy, Planning, and Evaluation
 - Human Resources
 - Internal Communications
 - Dr. Sundari Mase, Health Officer