

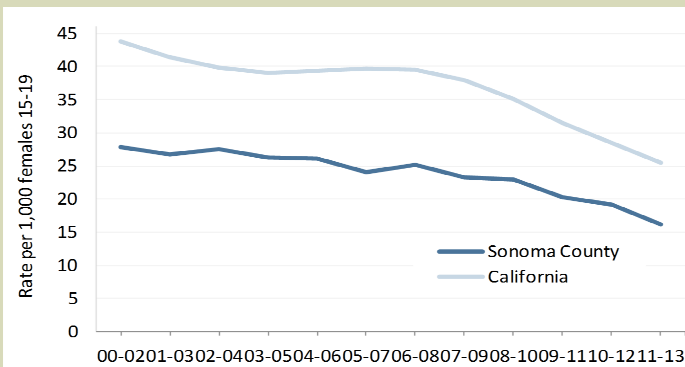


Overview

Teen birth is an important public health issue with significant medical, social, and economic costs. Compared with older mothers, teens are less likely to receive adequate prenatal and postnatal care and are at increased risk for delivering a premature or low birth weight infant.¹ Children born to teen mothers generally have poorer academic and behavioral outcomes than children born to older mothers² and are more likely to initiate sex at an early age and to have a teen birth themselves.³ Teen parenthood for both mothers and fathers is associated with lower educational attainment and lower income levels. Financial hardship can be compounded by the fact that teen mothers are less likely to be married or stay married, which may mean covering family expenses on their own.¹

Nationally, birth rates to teens 15-19 years of age have decreased continuously over the past 20 years. In Sonoma County, the teen birth rate has decreased by 42% since 2000-2002. While reasons for the declines are not clear, data suggest teens seem to be less sexually active, and more of those who are sexually active seem to be using birth control.⁴

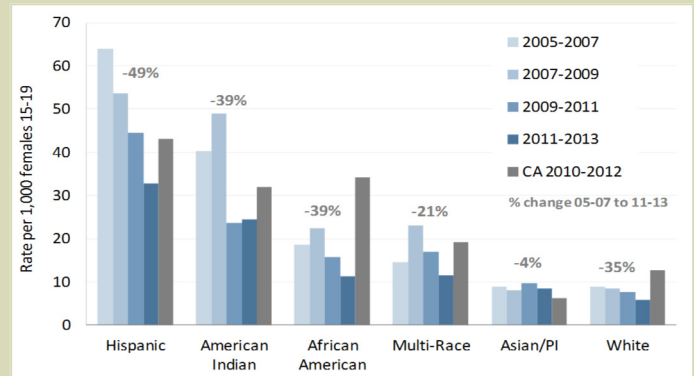
Figure 1. Teen birth rate per 1,000 females 15-19 years, three year moving average—Sonoma County and California 2000-2013



Trend

- The Sonoma County teen birth rate remained significantly lower than the California birth rate (Figure 1).
- The Sonoma County teen birth rate decreased by approximately 42% from 2000-2002 to 2011-2013. This represents about 180 less births to Sonoma County teens each year.

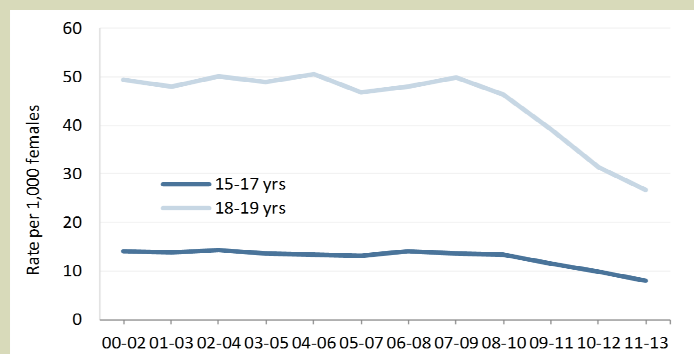
Figure 2. Teen Birth rate by race/ethnicity per 1,000 females 15-19 yrs, three year average— Sonoma County 2005-2013



Race/Ethnicity

- While birth rates among Hispanic teens continue to decline, they remain the highest in the county.
- From 2005-2007 to 2011-2013 the birth rate decreased most significantly among Hispanic teens (49%). While the number of teen births among other race/ethnic groups is small, birth rates continued to decline for American Indian, African American and multi-racial teens (Figure 2).
- Compared to California (2010-2012), Sonoma County teen birth rates were significantly lower for all race/ethnicities except Asian/Pacific Islanders and American Indians where rates were statistically similar.

Figure 3. Teen birth rate by age of mother, three year moving average— Sonoma County 2000-2013



Age of Mother

- Birth rates to teens 15-17 and 18-19 years remained largely unchanged from 2000-2002 to 2007-2009. From 2007-2009 to 2011-2013, however, a significant decrease in rates for both age categories occurred. The teen birth rate decreased 43% for 15-17 year olds and 43% for teens 18-19 years.

Table 1. Teen birth rate per 1,000 females 15-19 years, three year moving average— Sonoma County 2000-2013

	2000-2002	2001-2003	2002-2004	2003-2005	2004-2006	2005-2007	2006-2008	2007-2009	2008-2010	2009-2011	2010-2012	2011-2013	
Sonoma County	27.8	26.8	27.5	26.2	26.1	24.1	25.1	23.2	23.0	20.4	19.1	16.1	v
California	43.7	41.4	39.8	39.0	39.3	39.6	39.5	37.9	35.1	31.5	28.4	25.5	v
<i>Race/ethnicity</i>													
White non-Hispanic	13.6	12.1	11.8	10.1	10.2	8.9	9.2	8.4	8.3	7.6	6.9	5.8	v
Hispanic	76.5	76.0	78.0	75.0	71.6	64.0	61.8	53.6	49.4	41.4	40.7	32.9	v
Asian/Pacific Islander	12.5	11.0	10.1	12.2	11.8	8.9	9.2	8.0	10.3	8.2	10.6	8.6	v
African American	17.2	17.4	21.2	16.0	15.7	18.7	22.4	22.4	18.6	14.3	13.9	11.3	
American Indian	53.0	56.6	63.5	63.5	46.6	40.2	44.1	49.0	38.7	18.1	24.7	24.5	v
2+ Race	15.4	13.7	13.3	10.6	13.3	14.5	21.0	23.1	26.2	19.7	13.0	11.4	
<i>Mother's age</i>													
15-17 yr	14.1	13.9	14.2	13.7	13.4	13.2	14.1	13.6	13.4	11.5	9.8	8.0	v
18-19 yr	49.3	47.9	50.1	48.8	50.5	46.7	47.9	49.9	46.3	39.0	31.3	26.7	v

v Significant decrease from 2000-2002 to 2011-2013 p<.05

^ Significant increase from 2000-2002 to 2011-2013 p<.05

Table 2. Teen birth rate per 1,000 females 15-19 years, three year average— Sonoma County 2011-2013

	Annual average	Rate	95% Confidence interval
Sonoma County	258	16.1	15.0-17.3
California	34583	25.5	25.2-25.7
<i>Race/ethnicity</i>			
White non-Hispanic	52	5.8	4.9-6.8
Hispanic	177	32.9	30.2-35.7
Asian/Pacific Islander	5	8.6	4.9-13.9
African American	4	11.3*	5.4-20.8
American Indian	3	24.5*	11.2-46.5
2+ Race	8	11.4	7.2-17.1
<i>Mother's age</i>			
15-17 yr	73	8.0	7.0-9.1
18-19 yr	185	26.7	24.6-29.0

*Relative standard error >30%. Rate is unreliable, interpret with caution

References

1. Mathews TJ, and MacDorman MF. (2007) Infant mortality statistics from the 2004 linked birth/infant death data set. National Vital Statistics Reports, 55(14).
2. Hoffman SD, and Maynard, RA (Eds). (2008). Kids having kids: Economic and societal consequences of teen pregnancy (2nd ed.). Washington, DCL The Urban Institute Press.
3. Manlove J, Terry-Human E, Papillo AR, et al. (2001). Background for community-level work on positive reproductive health in adolescence: Reviewing the literature on contributing factors. Washington, DC: Child Trends.
4. Centers for Disease Control and Prevention. Teen Pregnancy: About Teen Pregnancy in the United States. <http://www.cdc.gov/teenpregnancy/aboutteenpreg.htm>. Accessed 3/2015.