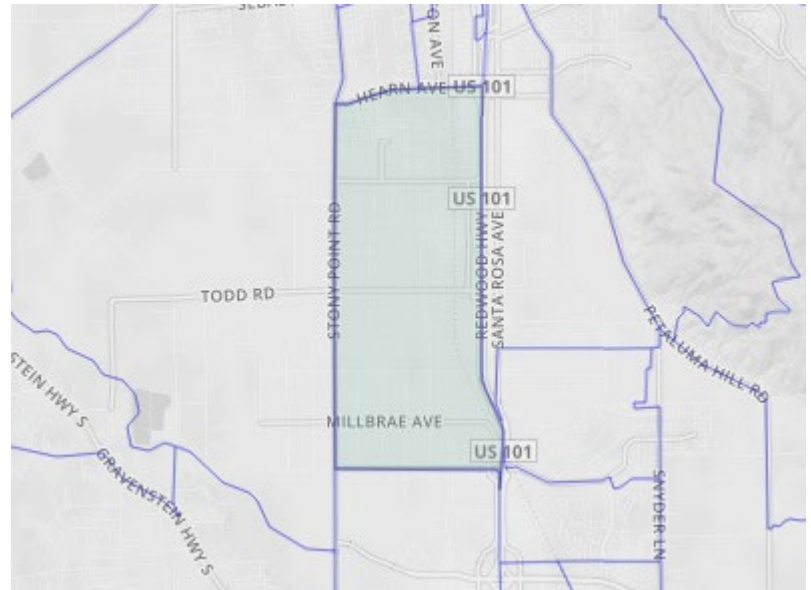


Neighborhood Profile – Bellevue

Census Tract: 153200

The Bellevue neighborhood is a census tract in Sonoma County, in Supervisorial District 5. The neighborhood is significantly foreign born with nearly 20% identifying as foreign born. The median income is significantly lower than the rest of Sonoma county (\$30,577/yr vs. \$72,000/yr), and the unemployment rate is more than twice that of the county, but the percentage of the population employed is slightly higher than that of the county. (64.1% vs 60.7%)

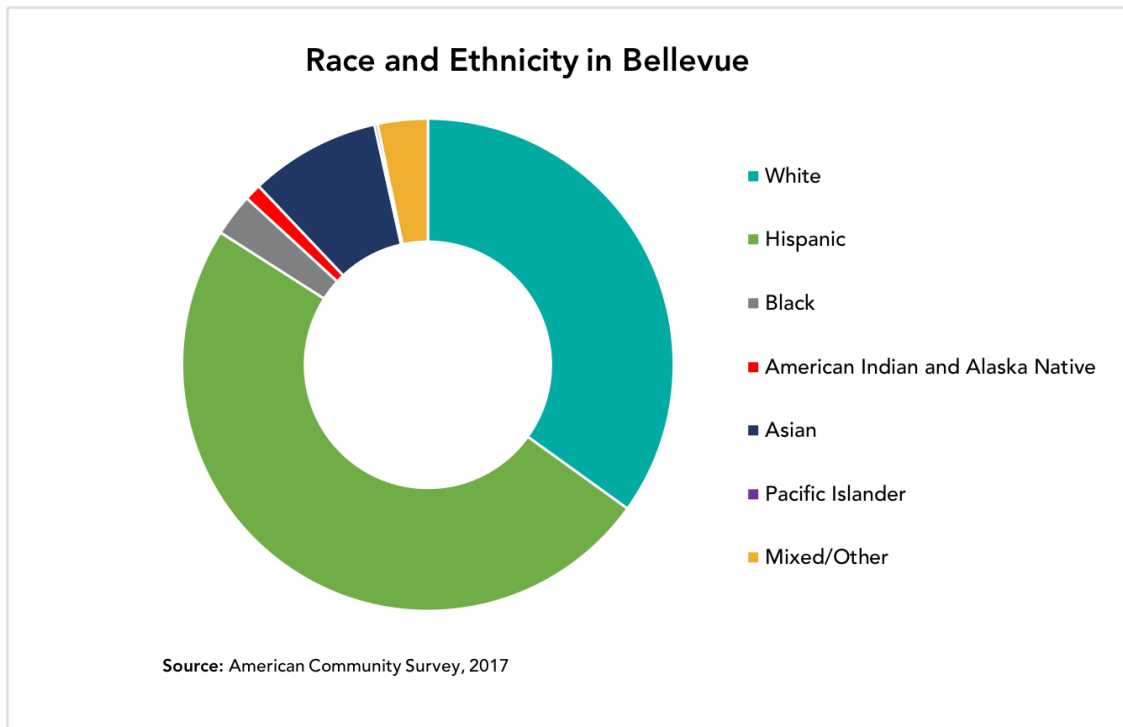
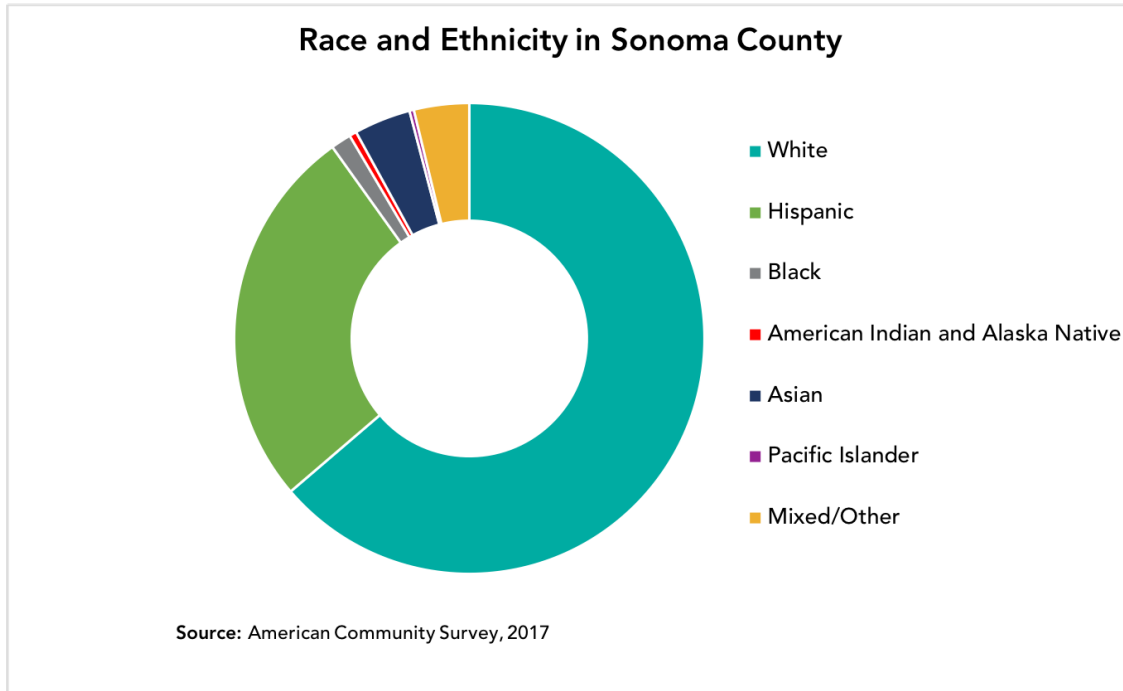


The neighborhood has a significantly higher number of households who rent compared to the County at large. Households in the neighborhood have relatively normal rates of overcrowding but have slightly higher substandard living conditions. The homes face a lower cost burden than the county at large. The share of adults with a college education is slightly lower than that of the county, however, K-12 students in the neighborhood score slightly higher in English and significantly higher in math proficiency and have lower rates of truancy.

The neighborhood has very good air quality, but very low rates of high school enrollment, remarkably high rates of house overcrowding, and a relatively high severe housing cost burden for renters.

Total Population: 8,040¹

Race & Ethnicity



¹ American Community Survey, 2013-2017

Employment & Income

	Countywide	Bellevue
Median Income	\$71,769	\$30,577
Population Employed	60.7%	64.1%
Unemployment	3.8%	7.4%

Vulnerable Populations

	Countywide	Bellevue
People employed in Farming, Fishing and Forestry	1.9%	6.1%
Foreign Born	1.3%	0%
Speak English Less than "very well"	11%	27.5%
Renters	39.7%	55.3%
People in Poverty	10.7%	10.2%
Elderly in Poverty	17.3%	7.1%
Veterans in Poverty	10.1%	0%
People with Disabilities in Poverty	12%	27.4%
Youth in Foster Care	2.1%	0%

(Source: American Community Survey 2013-2017)

Languages Spoken

	Countywide	Bellevue
Population 5 years and over	474,758	7,324
English only	74.4%	46.2%
Spanish	19.7%	42.3%
Speak English less than "very well"	9.1%	22.5%
Other Indo-European languages	2.7%	2.2%
Speak English less than "very well"	0.6%	1.64%
Asian and Pacific Islander languages	2.6%	8.9%
Speak English less than "very well"	1.1%	5.0%

Other languages	0.5%	.4%
Speak English less than "very well"	0.2%	0%
Language other than English	25.6%	53.8%
Speak English less than "very well"	11.0%	27.5%

Housing Conditions

	Countywide	Bellevue
Housing Tenure	<u>Homeowners:</u> 60.3 % <u>Renters:</u> 39.7%	<u>Homeowners:</u> 44.7% <u>Renters:</u> 55.3%
Overcrowding (>1 occupant per room)	<u>Homeowners:</u> 2.5% <u>Renters:</u> 9.2%	<u>Homeowners:</u> 3.3% <u>Renters:</u> 1.7%
Substandard Conditions	<u>Without Complete Kitchen Facilities</u> Homeowners: 0.3% Renters: 1.8%	<u>Without Complete Kitchen Facilities</u> Homeowners: 0% Renters: 3.8%
	<u>Without Complete Plumbing Facilities</u> Homeowners: 0.2% Renters: 0.6%	<u>Without Complete Plumbing Facilities</u> Homeowners: 0% Renters: 3.8%
High Housing Cost Burden	<u>Homeowners</u> With mortgage: 39.6% Without mortgage: 15.9% <u>Renters:</u> 56.1%	<u>Homeowners</u> With mortgage: 65.1% Without mortgage: 0% <u>Renters:</u> 59.5%

(Source: American Community Survey 2013-2017)

Displacement Risk

This neighborhood is a moderate to high income tract which is at risk of exclusion.

(Source: Urban Displacement Project)

Lending

	Countywide	Bellevue
Population ACS 2013-2017	500,943	8,040 (1.6% of the County's population)
Loans made in 2017	19,529	398 (1.3% of all loans made in the County)
High Cost Loans (as a percentage of total single-family owner-occupied home loans)	273 (1.4% of all loans)	10 (2.5% of all loans made in this neighborhood)
Loan Applications approved, but not accepted	511 (2.6% of all loans)	11 (2.8% of all loans made in this neighborhood)
Loan Application Denials (as a percentage of total single family owner-occupied home loans)	2,395 (12.3% of all loans)	54 (13.6% of all loans made in this neighborhood)

(Source: Home Mortgage Disclosure Act – consumerfinance.gov/hmda)

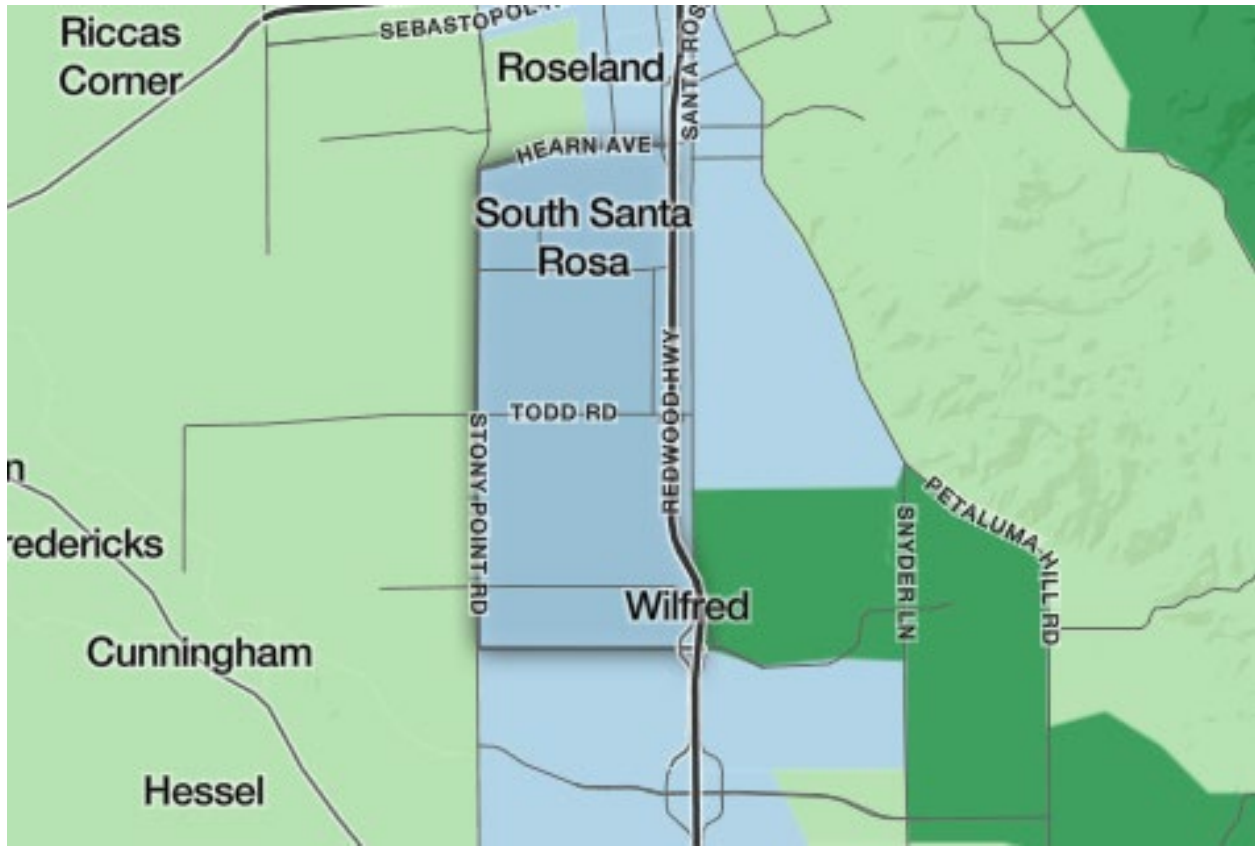
Education

	Countywide	Bellevue
Percentage of College Educated Adults (Source: American Community Survey 2013-2017)	32.3%	19.3%
Percentage of 4 th Graders with English Proficiency (Source: Kidsdata.org Students Meeting or Exceeding Grade-Level Standard in English Language Arts (CAASPP) 4 th grade)	44%	44.4%
Elementary School Truancy Rate (Source: CDE)	31.5%	20.6%
4 th Grade Math Proficiency Rate (Source: Kidsdata.org)	37%	54.6%
High School Graduation Rate (Source: CDE)	87.3%	72.9%

(Source – UC Davis Regional Opportunity Index)

Note: Point estimates at the census tract level often have margins of error greater than 10 percent of the total value. Use these estimates appropriately.

Healthy Places Index Information



	Bellevue (Percentile among tracts in CA)
Neighborhood Strengths	
Clean Air – Ozone – This tract has a lower average amount of ozone in the air during the most polluted 8 hours of summer days than 96.1% of other California census tracts.	96.1th
Clean Air – PM 2.5 – This tract has a lower yearly average of fine particulate matter concentration (very small particles from vehicle tailpipes, tire sand brakes, powerplants, factories, burning wood, construction dust, and many other sources) than 93.8% of other California census tracts.	93.8th
Neighborhood Vulnerabilities	

<p>High School Enrollment – This tract has a higher percentage of 15-17 year olds in school than just 4.1% of other California census tracts.</p>	<p>4.1th</p>
<p>Low-Income Renter Severe Housing Cost Burden – This tract has a lower percentage of low-income renters who pay more than 50% of their income in housing costs than just 15% of other California census tracts.</p>	<p>15th</p>
<p>Uncrowded Housing – This tract has a higher percentage of households with 1 or less occupants per room than just 16.4% of other California census tracts.</p>	<p>16.4th</p>
<p>Safe Drinking Water – Contaminants – This tract has a lower index score combining information about 13 contaminants and 2 types of water quality violations that are sometimes found when drinking water samples are tested than just 15.4% of other California census tracts.</p>	<p>15.4th</p>

Uses data from: <https://map.healthyplacesindex.org>