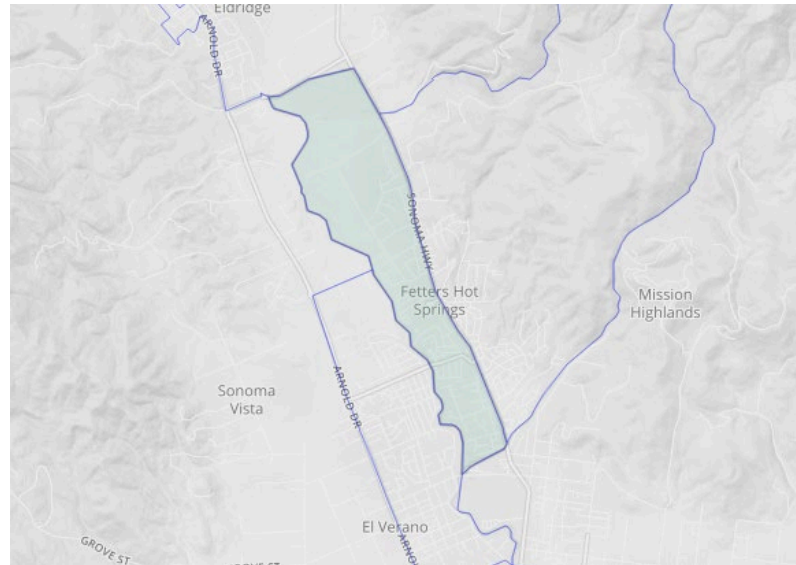


Neighborhood Profile – Fetters Springs/Agua Caliente West

Census Tract: 150305

The Fetters Springs/Agua Caliente West neighborhood is a census tract in the Sonoma Valley, Supervisorial District 1. The neighborhood is predominantly Latino, with 69% of residents identifying as such. Over a third (40%) of individuals reported being able to speak English less than “very well”. The median income is significantly lower than the rest of Sonoma county (\$49,000/yr vs.



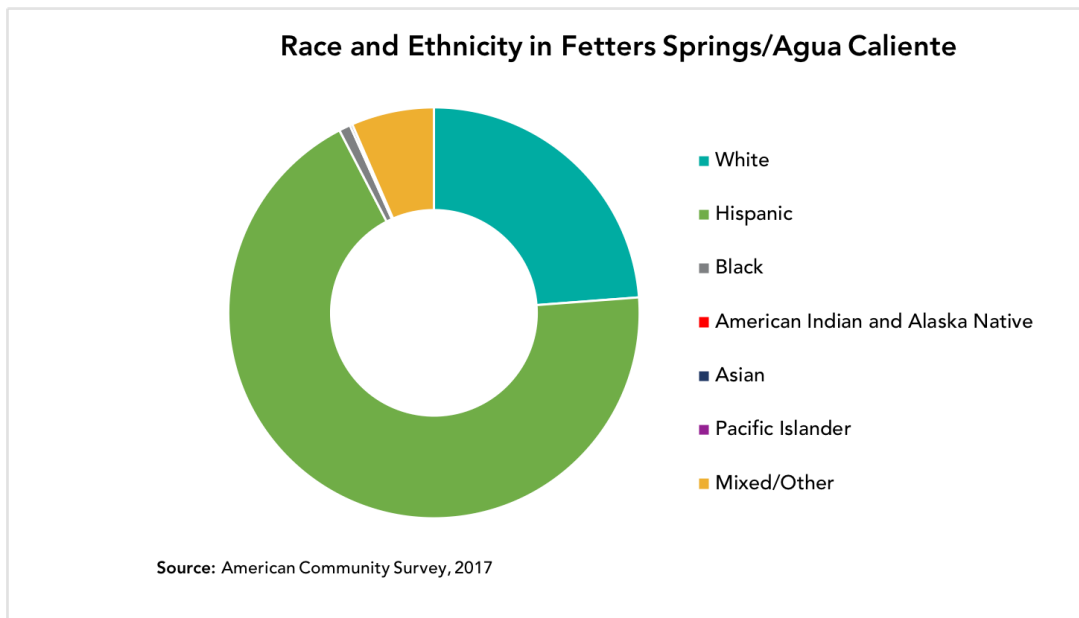
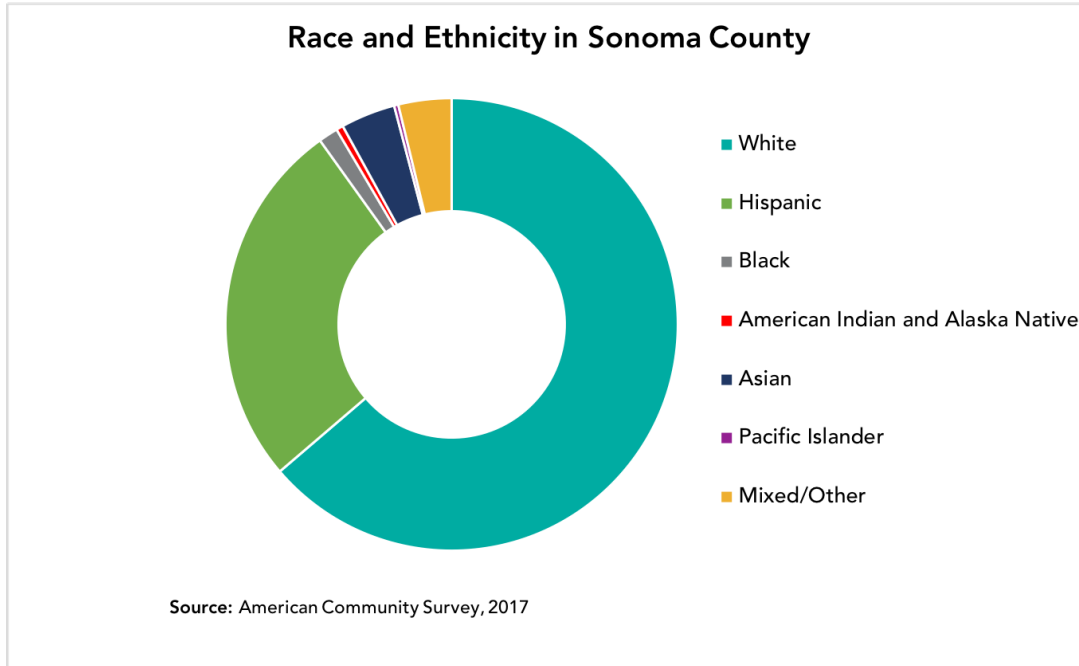
\$72,000/yr), as is the share of the population that is employed, however the unemployment rate is in line with the rest of the county implying there is a higher than average share of the population out of the labor force (retired, disabled, etc.).

The neighborhood has a much higher rate of households who rent than the County at large. Households in the neighborhood have a slightly higher rate of overcrowding, substandard living conditions, and face a higher cost burden than the County at large - especially renters. The share of adults with a college education is one-third that of the county, and preschool enrollment is low. However, K-12 students in the neighborhood excel, scoring higher in English and math proficiency and have lower rates of truancy.

The neighborhood has excellent tree canopy, very good air quality, but very low retail density and supermarket access.

Total Population: 6,068¹

Race & Ethnicity



¹ American Community Survey, 2013-2017

Employment & Income

	Countywide	Fetters Springs/Agua Caliente
Median Income	\$71,769	\$49,137
Population Employed	60.7%	50.0%
Unemployment	3.8%	4.2%

Vulnerable Populations

	Countywide	Fetters Springs/Agua Caliente
People employed in Farming, Fishing and Forestry	1.9%	5.6%
Foreign Born	1.3%	2.4%
Speak English Less than "very well"	11%	40.1%
Renters	39.7%	54.0%
People in Poverty	10.7%	17.4%
Elderly in Poverty	17.3%	0%
Veterans in Poverty	10.1%	12.3%
People with Disabilities in Poverty	12%	1.7%
Youth in Foster Care	2.1%	0%

(Source: American Community Survey 2013-2017)

Languages Spoken

	Countywide	Fetters Springs/Agua Caliente
Population 5 years and over	474,758	5,586
English only	74.4%	32.2%
Spanish	19.7%	67.2%
Speak English less than "very well"	9.1%	40%
Other Indo-European languages	2.7%	0.4%
Speak English less than "very well"	0.6%	0%
Asian and Pacific Islander languages	2.6%	0.2%
Speak English less than "very well"	1.1%	0.1%

Other languages	0.5%	0%
Speak English less than "very well"	0.2%	0%
Language other than English	25.6%	67.8%
Speak English less than "very well"	11.0%	40.1%

Housing Conditions

	Countywide	Fetters Springs/Agua Caliente
Housing Tenure	<u>Homeowners: 60.3%</u> <u>Renters: 39.7%</u>	<u>Homeowners: 46%</u> <u>Renters: 54%</u>
Overcrowding (>1 occupant per room)	<u>Homeowners: 2.5%</u> <u>Renters: 9.2%</u>	<u>Homeowners: 4.6%</u> <u>Renters: 40.1%</u>
Substandard Conditions	<u>Without Complete Kitchen Facilities</u> Homeowners: 0.3% Renters: 1.8% <u>Without Complete Plumbing Facilities</u> Homeowners: 0.2% Renters: 0.6%	<u>Without Complete Kitchen Facilities</u> Homeowners: 0% Renters: 3.6% <u>Without Complete Plumbing Facilities</u> Homeowners: 0% Renters: 3.6%
High Housing Cost Burden	<u>Homeowners</u> With mortgage: 39.6% Without mortgage: 15.9% <u>Renters: 56.1%</u>	<u>Homeowners</u> With mortgage: 43% Without mortgage: 20.50% <u>Renters: 68%</u>

(Source: American Community Survey 2013-2017)

Displacement Risk

This neighborhood is a lower income census tract that is not currently losing low income households.

(Source: Urban Displacement Project)

Lending

	Countywide	Fetters Springs/Agua Caliente
Population ACS 2013-2017	500,943	6,068 (1.2% of the County's population)
Loans made in 2017	19529	123 (0.6% of all loans made in the County)
High Cost Loans (as a percentage of total single-family owner-occupied home loans)	273 (1.4% of all loans made in the County)	2 (1.6% of all loans made in this neighborhood)
Loan Applications approved, but not accepted	511 (2.6% of all loans made in the County)	4 (3.3% of all loans made in this neighborhood)
Loan Application Denials (as a percentage of total single family owner-occupied home loans)	2,395 (12.3% of all loans made in the County)	15 (12.2% of all loans made in this neighborhood)

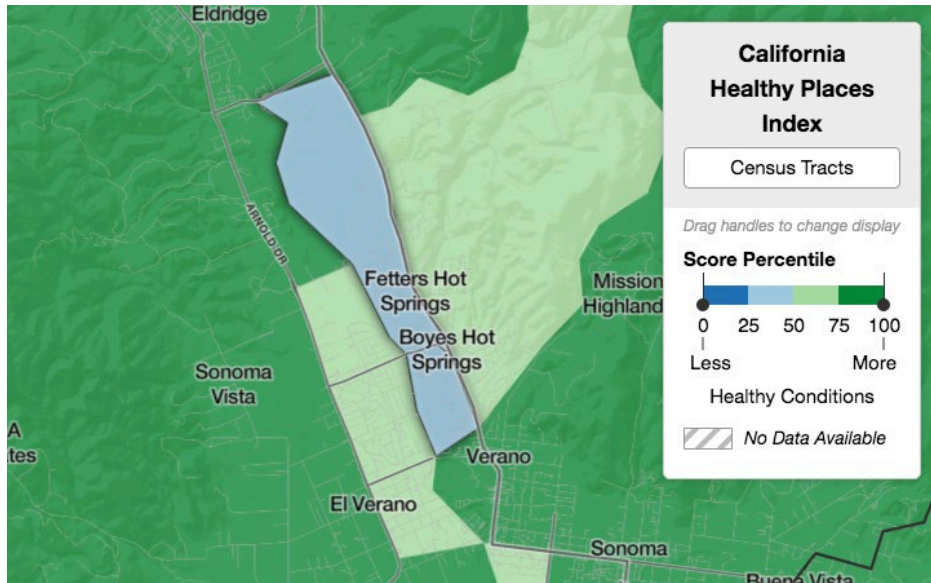
(Source: Home Mortgage Disclosure Act – consumerfinance.gov/hmda)

Education

	Countywide	Fetters Springs/Agua Caliente
Percentage of College Educated Adults (Source: American Community Survey 2013-2017)	32.3%	12.2%
Percentage of 4 th Graders with English Proficiency (Source: Kidsdata.org Students Meeting or Exceeding Grade-Level Standard in English Language Arts (CAASPP) 4 th grade)	44%	54.8%
Elementary School Truancy Rate (Source: CDE)	31.5%	5.7%
4 th Grade Math Proficiency Rate (Source: Kidsdata.org)	37%	43%
High School Graduation Rate (Source: CDE)	87.3%	87.4%

(Source – UC Davis Regional Opportunity Index)

Healthy Places Index Information



Neighborhood Strengths	Feters Springs/Agua Caliente (Percentile among tracts in CA)
Tree Canopy – This tract has a higher percentage of land with tree canopy than 92% of other California census tracts	92
Employed – This tract has a higher percentage of people aged 25-64 who are employed than 87.1% of other California census tracts.	87.1
High School Enrollment – This tract has a higher percentage of 15-17 year-olds in school than 100% of other California census tracts.	100
Voting – A higher percentage of registered voters in this voted in this community than in 85.8% of all California Census Tracts	85.8
Clean Air – Ozone - This tract has a lower average amount of ozone in the air during the most polluted 8 hours of summer days than 90.6% of other California census tracts.	90.6
Clean Air – PM 2.5 - This tract has a lower yearly average of fine particulate matter concentration (very small particles from vehicle tailpipes, tires and brakes, powerplants, factories, burning wood, construction dust, and many other sources) than 90.4% of other California census tracts.	90.4
Clean Air – Diesel PM - This tract has a lower average daily amount of particulate pollution (very	82.4

small particles) from diesel sources (for July) than 82.4% of other California census tracts.	
Neighborhood Vulnerabilities	
Supermarket Access – This tract has a higher percentage of people in urban areas who live less than a half mile from a supermarket/large grocery store than just 17.1% of other California Census Tracts.	17
Preschool Enrollment - This tract has a higher percentage of 3 and 4 year olds in school than just 13.2% of other California census tracts.	13.2
Insured Adults - This tract has a higher percentage of adults aged 18 to 64 years with health insurance than just 10.3% of other California census tracts.	10.3
Low-Income Homeowner Severe Housing Cost Burden - This tract has a lower percentage of low-income homeowners who pay more than 50% of their income on housing costs than just 8.9% of other California census tracts.	8.9
Uncrowded Housing - This tract has a higher percentage of households with 1 or less occupant per room than just 12% of other California census tracts.	12

Uses data from: <https://map.healthyplacesindex.org>