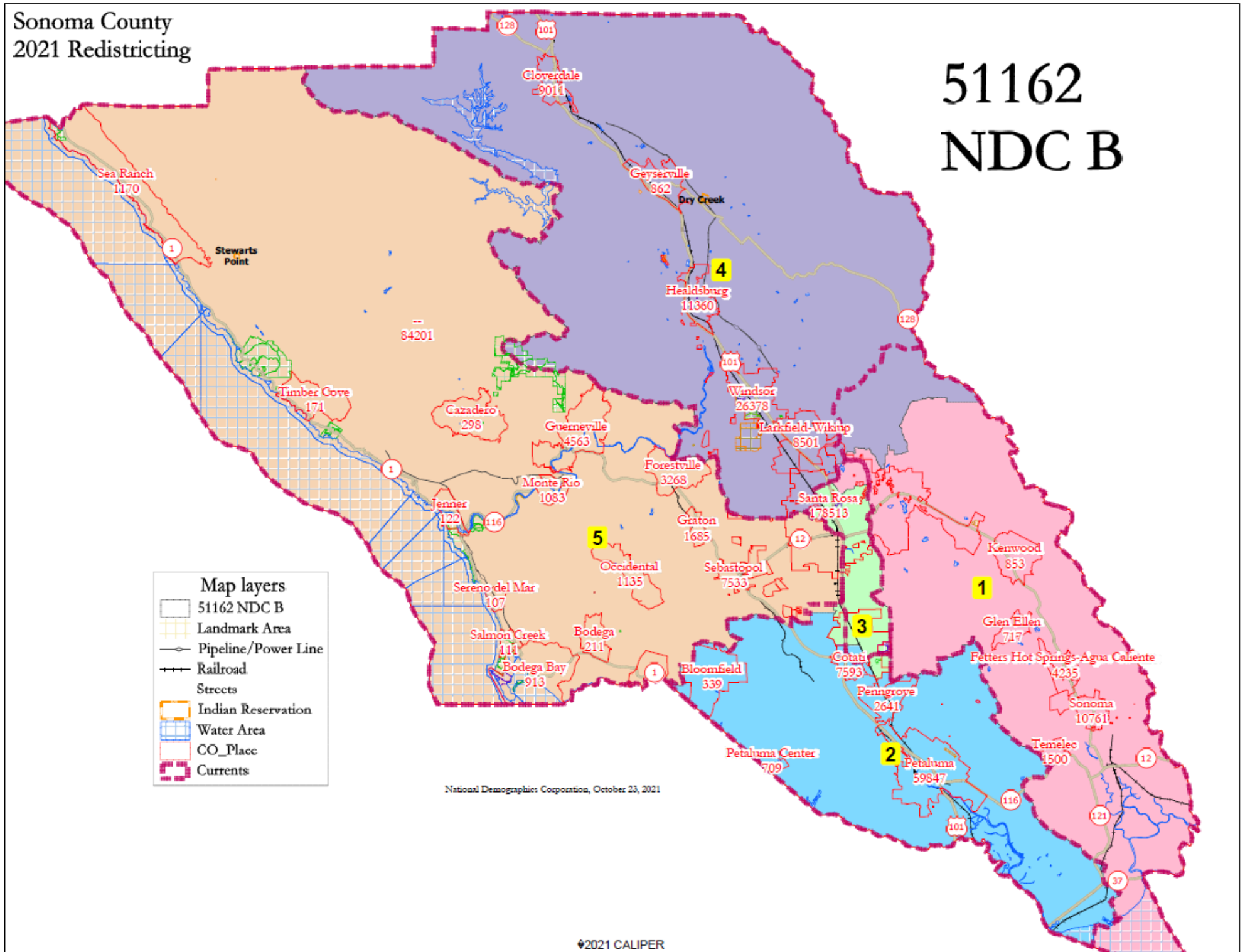


Sonoma County
2021 Redistricting

51162
NDC B



51162 NDC B

District		1	2	3	4	5	Total
	Total Pop	96,974	97,394	98,734	96,480	100,128	489,710
	Deviation from ideal	-968	-548	792	-1,462	2,186	3,648
	% Deviation	-0.99%	-0.56%	0.81%	-1.49%	2.23%	3.72%
Total Pop	% Hisp	21.1%	23%	34%	33%	33%	29%
	% NH White	68%	64%	49%	56%	55%	58%
	% NH Black	1%	2%	3%	2%	2%	2%
	% Asian-American	5%	6%	9%	5%	5%	6%
Citizen Voting Age Pop	Total	75,307	71,206	67,104	69,968	72,905	356,490
	% Hisp	11%	13%	19%	21%	18%	16%
	% NH White	83%	80%	69%	71%	73%	75%
	% NH Black	1%	1%	3%	1%	2%	2%
	% Asian/Pac.Isl.	4%	5%	6%	4%	4%	5%
Voter Registration (Nov 2020)	Total	66,414	63,091	52,362	60,358	60,322	302,547
	% Latino est.	10%	12%	19%	19%	17%	15%
	% Spanish-Surnamed	9%	11%	17%	17%	16%	14%
	% Asian-Surnamed	2%	2%	3%	2%	2%	2%
	% Filipino-Surnamed	1%	1%	1%	1%	1%	1%
	% NH White est.	86%	84%	75%	78%	79%	81%
	% NH Black	1%	1%	3%	1%	2%	1%
Voter Turnout (Nov 2020)	Total	60,236	56,789	45,018	53,695	52,831	268,569
	% Latino est.	9%	11%	17%	17%	15%	14%
	% Spanish-Surnamed	9%	11%	16%	16%	14%	13%
	% Asian-Surnamed	2%	2%	3%	2%	2%	2%
	% Filipino-Surnamed	1%	1%	1%	1%	1%	1%
	% NH White est.	87%	85%	77%	79%	80%	82%
	% NH Black	1%	1%	3%	1%	2%	1%
Voter Turnout (Nov 2018)	Total	49,850	44,742	32,986	40,519	41,161	209,258
	% Latino est.	7%	9%	13%	14%	11%	10%
	% Spanish-Surnamed	7%	9%	12%	13%	11%	10%
	% Asian-Surnamed	2%	2%	2%	2%	2%	2%
	% Filipino-Surnamed	1%	1%	1%	1%	1%	1%
	% NH White est.	89%	87%	81%	83%	84%	85%
	% NH Black est.	1%	1%	3%	1%	1%	1%
ACS Pop. Est.	Total	99,646	99,871	96,559	99,538	104,158	499,772
Age	age0-19	19%	23%	24%	24%	22%	22%
	age20-60	45%	52%	57%	51%	52%	51%
	age60plus	36%	24%	19%	26%	27%	26%
Immigration	immigrants	14%	15%	18%	16%	19%	16%
	naturalized	48%	45%	43%	46%	39%	44%
Language spoken at home	english	81%	77%	70%	72%	72%	74%
	spanish	12%	17%	23%	23%	23%	20%
	asian-lang	3%	2%	4%	2%	3%	3%
	other lang	4%	4%	3%	3%	2%	3%
Language Fluency	Speaks Eng. "Less than Very Well"	7%	9%	13%	12%	14%	11%
Education (among those age 25+)	hs-grad	38%	44%	46%	45%	45%	44%
	bachelor	26%	24%	20%	21%	19%	22%
	graduatedegree	19%	13%	10%	12%	12%	13%
Child in Household	child-under18	22%	30%	28%	31%	27%	28%
Pct of Pop. Age 16+	employed	59%	67%	68%	67%	65%	65%
Household Income	income 0-25k	11%	11%	17%	11%	14%	13%
	income 25-50k	16%	15%	21%	15%	18%	17%
	income 50-75k	16%	17%	19%	15%	17%	17%
	income 75-200k	42%	45%	39%	47%	42%	43%
	income 200k-plus	15%	13%	5%	13%	9%	11%
Housing Stats	single family	83%	82%	62%	84%	88%	80%
	multi-family	17%	18%	38%	16%	12%	20%
	rented	34%	36%	53%	34%	36%	39%
	owned	66%	64%	47%	66%	64%	61%

Total population data from the 2020 Decennial Census.

Surname-based Voter Registration and Turnout data from the California Statewide Database.

Latino voter registration and turnout data are Spanish-surname counts adjusted using Census Population Department undercount estimates. NH White and NH Black registration and turnout counts estimated by NDC. Citizen Voting Age Pop., Age, Immigration, and other demographics from the 2015-2019 American Community Survey and Special Tabulation 5-year data.