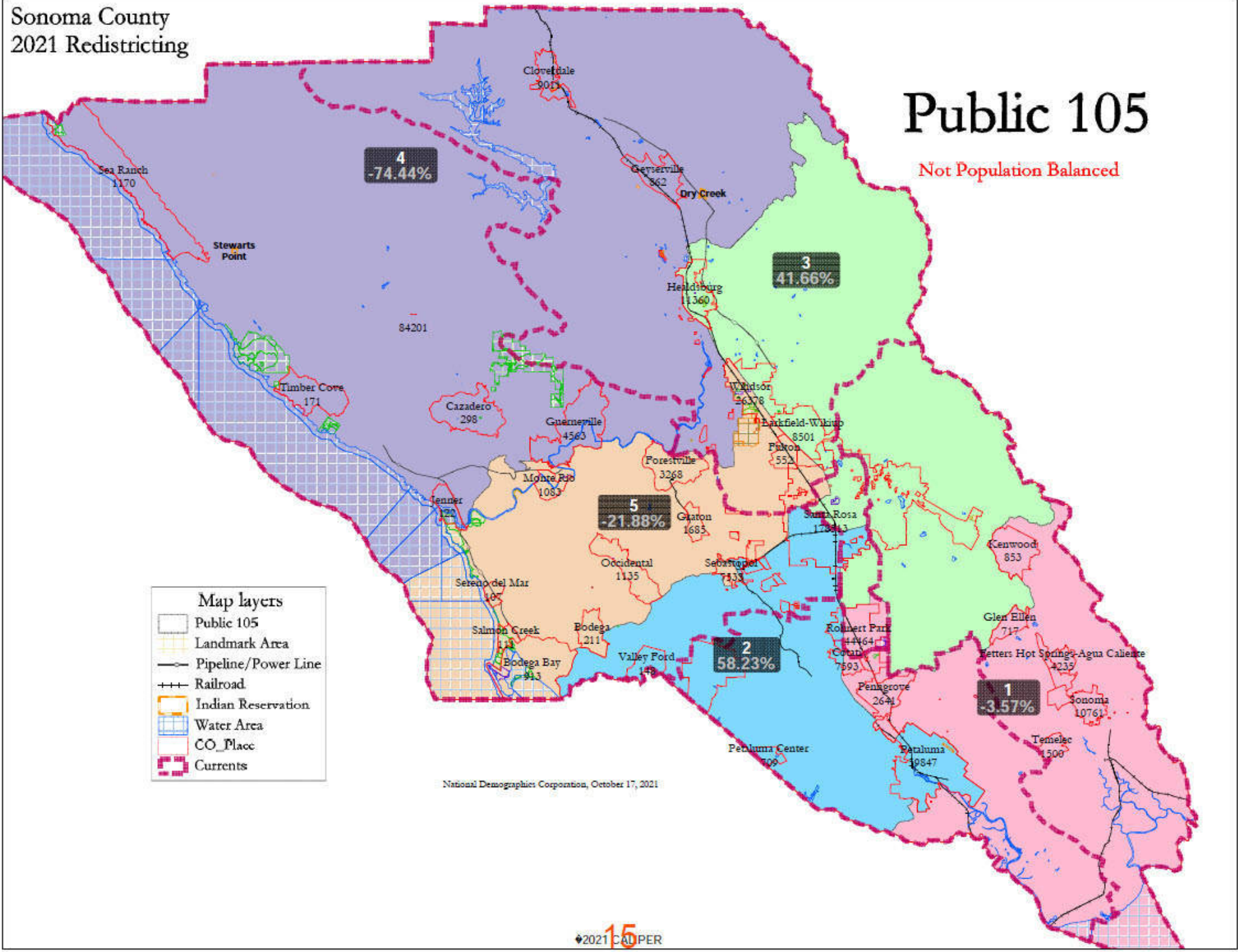


# Public 105

Not Population Balanced



**Map layers**

- Public 105
- Landmark Area
- Pipeline/Power Line
- Railroad
- Indian Reservation
- Water Area
- CO\_Placc
- Currents

National Demographics Corporation, October 17, 2021

Public 105							
District		1	2	3	4	5	Total
	Total Pop	94,444	154,975	138,749	25,034	76,508	489,710
	Deviation from ideal	-3,498	57,033	40,807	-72,908	-21,434	129,941
	% Deviation	-3.57%	58.23%	41.66%	-74.44%	-21.88%	132.67%
Total Pop	% Hisp	27.7%	34%	25%	27%	28%	29%
	% NH White	59%	52%	63%	64%	59%	58%
	% NH Black	2%	2%	2%	1%	2%	2%
	% Asian-American	7%	7%	5%	2%	6%	6%
Citizen Voting Age Pop	Total	69,278	105,082	104,477	19,060	58,593	356,490
	% Hisp	16%	19%	13%	13%	18%	16%
	% NH White	76%	71%	78%	81%	74%	75%
	% NH Black	2%	2%	2%	1%	2%	2%
	% Asian/Pac.Isl.	5%	6%	5%	2%	4%	5%
Voter Registration (Nov 2020)	Total	56,936	88,719	91,388	16,576	48,928	302,547
	% Latino est.	15%	18%	12%	14%	15%	15%
	% Spanish-Surnamed	14%	17%	12%	13%	14%	14%
	% Asian-Surnamed	2%	3%	2%	1%	2%	2%
	% Filipino-Surnamed	1%	1%	1%	0%	1%	1%
	% NH White est.	81%	77%	84%	83%	81%	81%
Voter Turnout (Nov 2020)	Total	50,600	77,883	81,735	14,779	43,572	268,569
	% Latino est.	14%	17%	11%	12%	14%	14%
	% Spanish-Surnamed	13%	15%	11%	12%	13%	13%
	% Asian-Surnamed	2%	2%	2%	1%	2%	2%
	% Filipino-Surnamed	1%	1%	1%	0%	1%	1%
	% NH White est.	82%	79%	85%	84%	82%	82%
Voter Turnout (Nov 2018)	Total	39,088	59,098	65,826	11,784	33,462	209,258
	% Latino est.	10%	13%	9%	10%	10%	10%
	% Spanish-Surnamed	10%	12%	8%	10%	10%	10%
	% Asian-Surnamed	2%	2%	2%	1%	2%	2%
	% Filipino-Surnamed	1%	1%	1%	0%	1%	1%
	% NH White est.	86%	83%	87%	86%	85%	85%
ACS Pop. Est.	Total	94,616	156,980	140,373	25,698	82,105	499,772
	age0-19	22%	24%	20%	19%	23%	22%
	age20-60	50%	54%	50%	46%	52%	51%
	age60plus	28%	22%	30%	35%	25%	26%
	immigrants	16%	20%	14%	15%	15%	16%
	naturalized	49%	40%	48%	33%	45%	44%
Language spoken at home	english	75%	69%	79%	79%	75%	74%
	spanish	19%	25%	15%	17%	20%	20%
	asian-lang	3%	3%	3%	2%	2%	3%
	other lang	3%	3%	3%	2%	3%	3%
Language Fluency	Speaks Eng. "Less than Very Well"	9%	15%	8%	11%	11%	11%
Education (among those age 25+)	hs-grad	45%	45%	40%	42%	46%	44%
	bachelor	23%	20%	25%	22%	20%	22%
	graduatedegree	13%	11%	17%	14%	12%	13%
Child in Household	child-under18	26%	33%	25%	22%	28%	28%
Pct of Pop. Age 16+	employed	65%	67%	63%	59%	67%	65%
Household Income	income 0-25k	13%	11%	13%	16%	14%	13%
	income 25-50k	17%	17%	16%	18%	17%	17%
	income 50-75k	17%	18%	16%	17%	15%	17%
	income 75-200k	42%	44%	43%	38%	42%	43%
	income 200k-plus	10%	10%	12%	11%	11%	11%
Housing Stats	single family	76%	82%	78%	91%	82%	80%
	multi-family	24%	18%	22%	9%	18%	20%
	rented	39%	38%	40%	33%	38%	39%
	owned	61%	62%	60%	67%	62%	61%

Total population data from the 2020 Decennial Census.

Surname-based Voter Registration and Turnout data from the California Statewide Database.

Latino voter registration and turnout data are Spanish-surname counts adjusted using Census Population Department undercount estimates. NH White and NH Black registration and turnout counts estimated by NDC. Citizen Voting Age Pop., Age, Immigration, and other demographics from the 2015-2019 American Community Survey and Special Tabulation 5-year data.