

Sonoma County

Multi-Jurisdictional Hazard Mitigation Plan

Mark West Community Advisory Committee
May 12, 2021

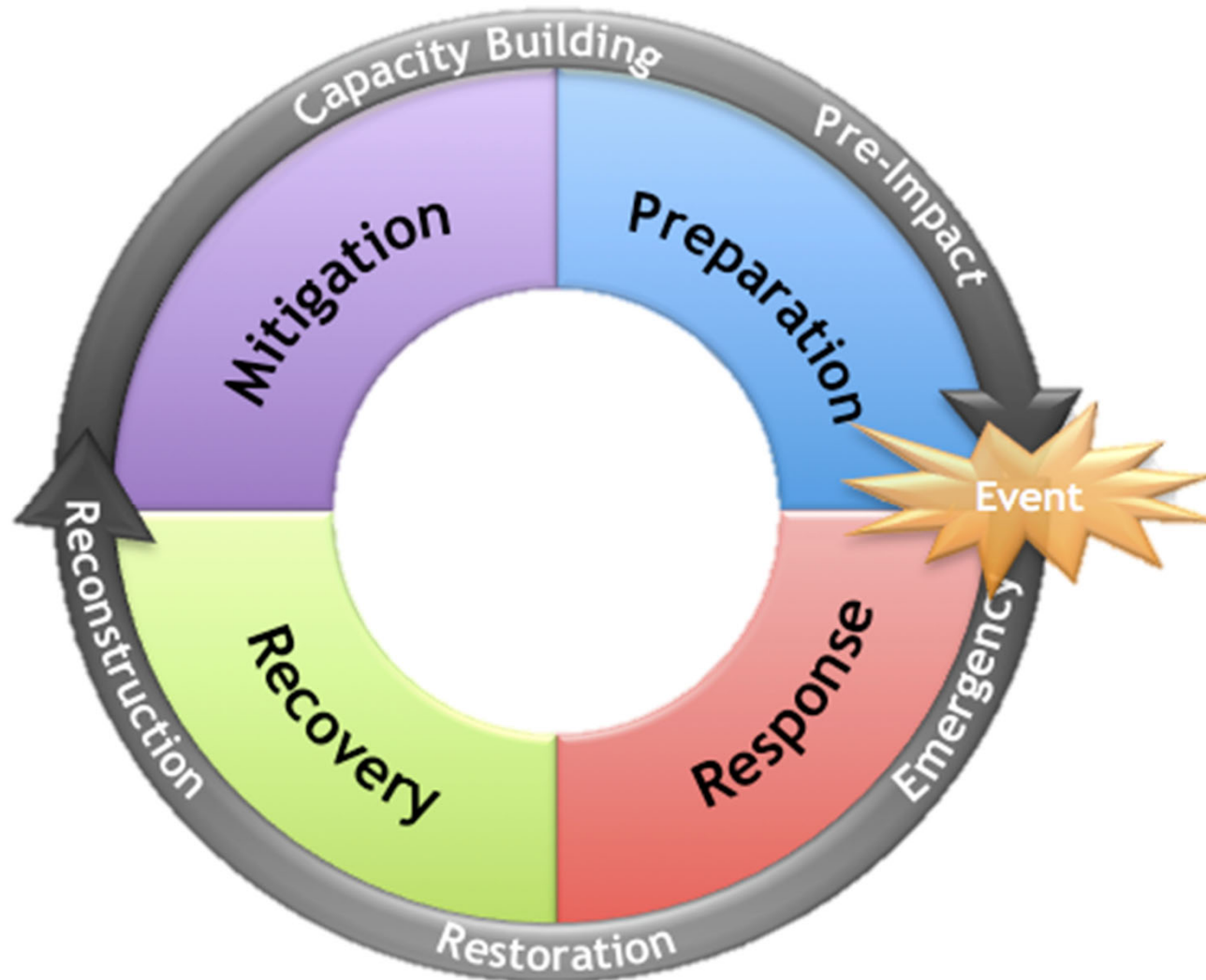


Presentation Overview

- Overview of Hazard Mitigation Planning
- Development of the Multi-Jurisdictional Hazard Mitigation Plan
- Mission and Goals
- Identified Hazards
- Hazard Plan Story Map
- Hazard Plan Timeline
- Questions and Weblinks

Emergency Management & The Disaster Cycle

Hazard Mitigation Plan



Two Types of Disaster Planning

Hazard Mitigation Plan

- **Proactive**
- **Develops actions to reduce or eliminate risk from future hazard events**
- **Identifies implementation priorities based on in depth local hazard assessment**

Emergency Operations Plan


- **Reactive**
- **Establishes overall operational concepts**
- **Details emergency management for any significant emergency or disaster**

What is a Hazard Mitigation Plan?



A mitigation plan establishes a broad local vision and guiding principles for reducing hazard risk, and proposes specific mitigation actions to eliminate or reduce identified vulnerabilities

Why a Multi-Jurisdictional Hazard Mitigation Plan?



- Enhance Public Awareness and Understanding Across Jurisdictional Boundaries
- Create a Decision Tool for Community Leaders
- Promote Compliance with State and Federal Programs and Take Full Advantage of Federal Disaster Grants
- Provide Inter-Jurisdictional Coordination of Mitigation-Related Programming

Current Sonoma County LHMP



Adopted in April 2017

Identifies vulnerabilities to the hazards – people, buildings, infrastructure

Identifies the likely hazards and the location and severity of each hazard

Identifies mitigation actions the County can take to reduce or eliminate the impact of the hazard

Requires annual maintenance of the Plan

Updating the Plan is required every 5 years to be eligible for FEMA grant funding

What is different in the 2021 Plan?

- The plan format will be adjusted to reflect the multi-jurisdiction plan approach.
- All hazard data reviewed, refreshed and updated
- Addressing the health pandemic based on lessons we learned from 2020.



Participating Jurisdictions



- County of Sonoma
- City of Santa Rosa
- Town of Windsor
- City of Cotati
- City of Sonoma
- Sonoma County Ag + Open Space
- Rancho Adobe Fire Protection District (FPD)
- Geyserville FPD
- North Sonoma Coast FPD
- Cloverdale FPD
- Timber Cover FPD
- Sonoma County FPD
- Gold Ridge RCD
- Sonoma RCD

Mission Statement

Create a resilient Sonoma County for
the whole community



Plan Goals



- Protect people and minimize loss of life, injury and social impacts
- Minimize potential for loss of property, economic and social impacts, and displacement due to hazards.
- Minimize potential for environmental
- Communicate natural hazard risk to the whole community
- Support and inform relevant mitigation policies and programs.
- Promote an adaptive and resilient Sonoma County
- Pursue the development and implementation of long-term, cost-effective and environmentally sound mitigation projects.
- Enhance the capability/capacity of the Sonoma County planning area to prepare, respond and recover from the impact of natural hazards.

Objectives of the SoCo Hazard Plan



- ❑ Encourage the incorporation of mitigation best management measures into plans, codes, and other regulatory standards
- ❑ Retrofit, purchase, or relocate structures in high hazard areas
- ❑ Promote and implement hazard mitigation plans
- ❑ Increase resilience of community Lifelines.
- ❑ Consider the impacts of natural hazards in all planning mechanisms that address current and future land uses within the planning area

Identified Hazard Ranking



1. Wildfire
2. Earthquake (includes Liquefaction) and Dam Failure
3. Flood
4. Drought
5. Severe Weather (includes Extreme Heat)
6. Landslide

Vulnerabilities



People

Public buildings

Residential and commercial buildings

Infrastructure

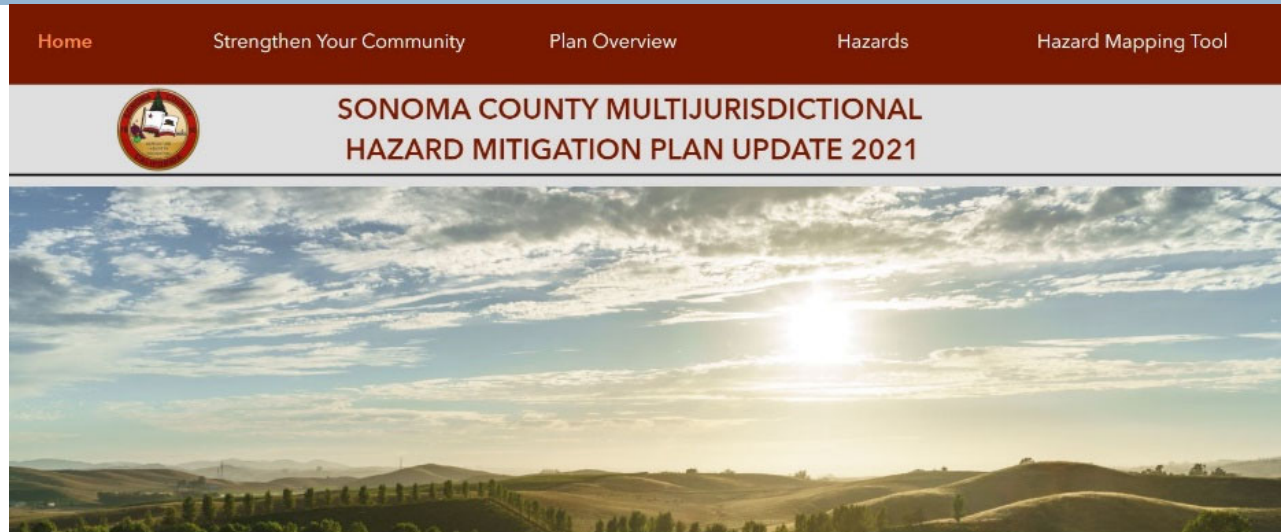
Natural resources

Cultural resources

Mitigation Actions - Purpose

Protect	Protect public safety
Prevent	Prevent loss of life and property
Reduce	Reduce harm to existing and future development – buildings, businesses, infrastructure, parks

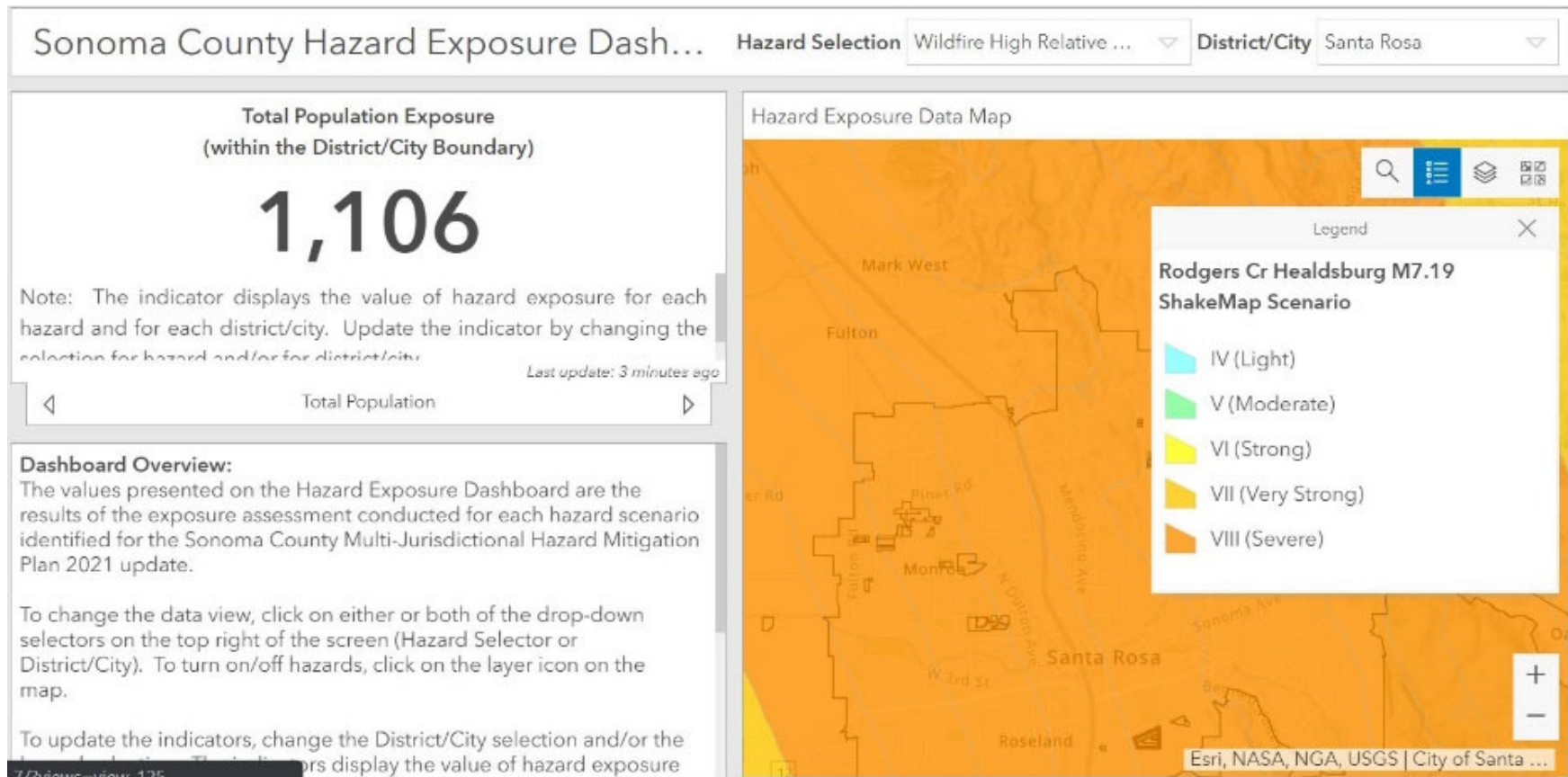
Sonoma County Hazard Plan Story Map



- ❑ Presents updated hazard and risk data for Sonoma County communities to review and provide input.
- ❑ Identifies community involvement opportunities
- ❑ Reflects the current status of the Sonoma County Multijurisdictional Hazard Mitigation Plan Update process
- ❑ Link available on the City website.

Mark West

Rodgers Cr Earthquake Scenario



Example Hazard Screening Tool _ 100- Year Flood

Sonoma County Hazard Exposure Dashb...

Hazard Selection Flood 100-yr

District/City Cotati

Total Number of Structures Exposed
(within the District/City Boundary)

219

Note: The indicator displays the value of hazard exposure for each hazard and for each district/city. Update the indicator by changing the selection for hazard and/or for district/city.

Last update! 3 minutes ago



of Structures



Dashboard Overview:

The values presented on the Hazard Exposure Dashboard are the results of the exposure assessment conducted for each hazard scenario identified for the Sonoma County Multi-Jurisdictional Hazard Mitigation Plan 2021 update.

To change the data view, click on either or both of the drop-down selectors on the top right of the screen (Hazard Selector or District/City). To turn on/off hazards, click on the layer icon on the map.

To update the indicators, change the District/City selection and/or the

Hazard Exposure Data Map

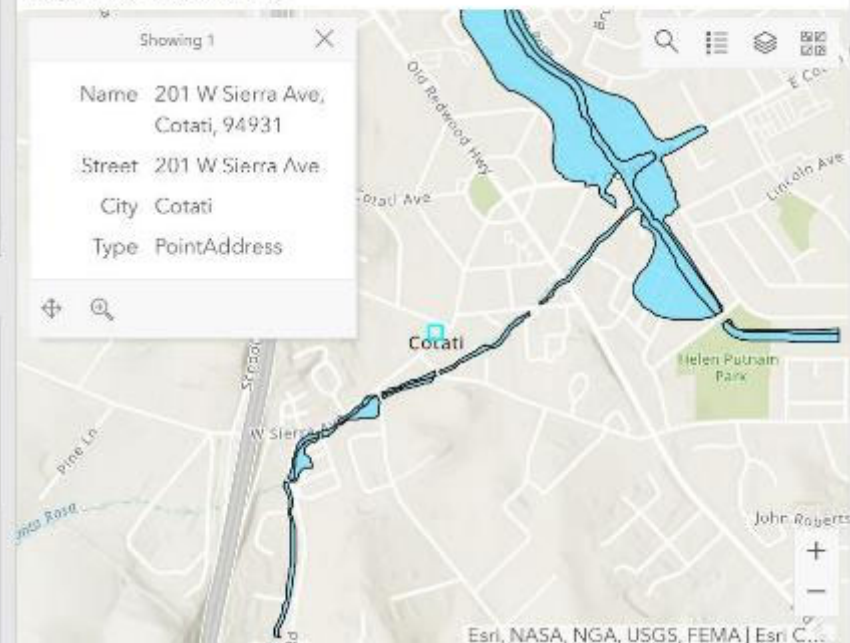
Showing 1

Name 201 W Sierra Ave,
Cotati, 94931

Street 201 W Sierra Ave

City Cotati

Type PointAddress



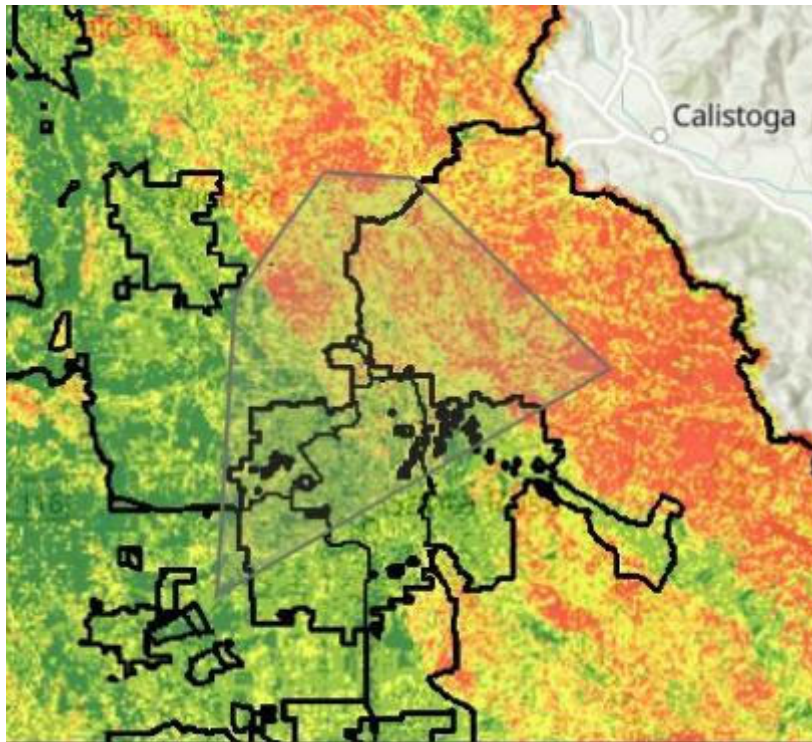
Cotati City Hall
201 West Sierra Ave, Cotati CA

Wildfire Hazard Assessment



- ❑ The Sonoma County Wildfire Hazard Index is a model that predicts relative wildfire hazard on the landscape.
- ❑ The hazard index reflects landscape conditions through the 2018 fire season.

Example Hazard Screening Tool _ Wildfire Hazard Index

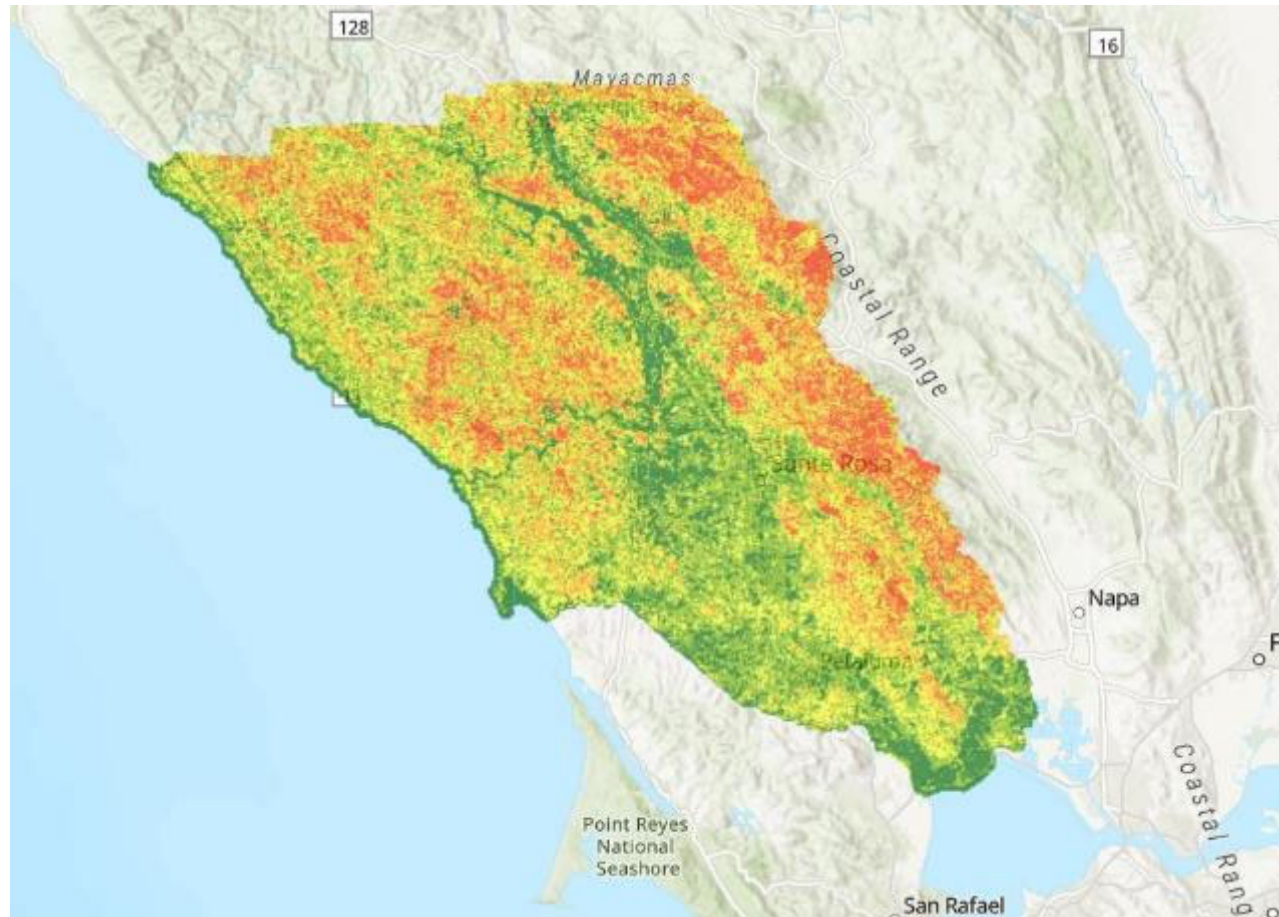


2550 Ventura Avenue, Santa Rosa

Relative Wildfire Hazard Index (Hazard_v5_96ft_Classified)

- Hazard Index
- Very Low
 - Low
 - Moderate
 - High
 - Very High

Wildfire Hazard Index Map



Relative Wildfire Hazard Index

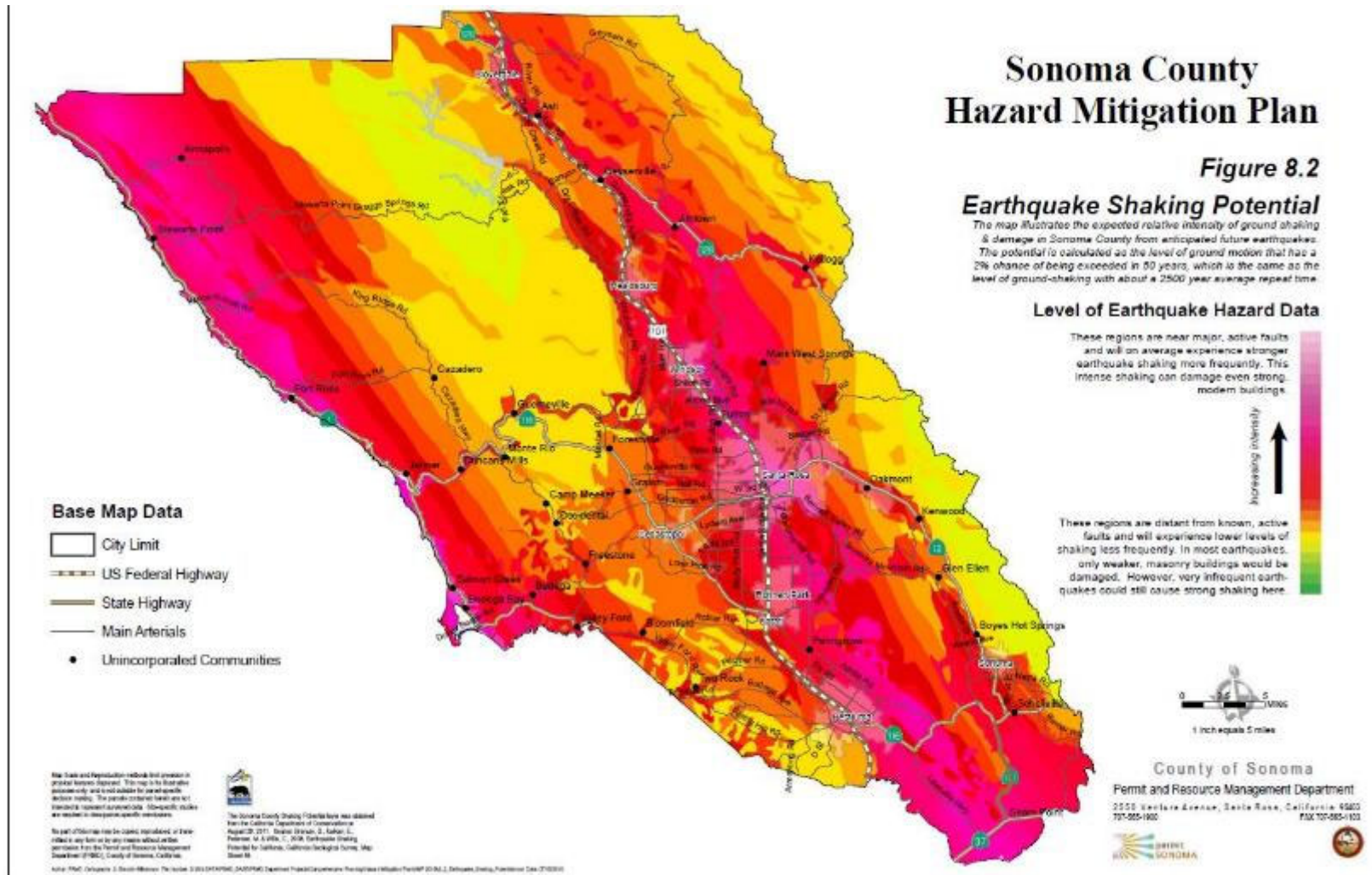
- ◆ Hazard Index
- Very Low
- Low
- Moderate
- High
- Very High

Earthquake Hazard



- The earthquake hazard is represented by four ShakeMap scenarios:
 - ▣ Hayward M7.57 (RC+HN+HS fault segments)
 - ▣ Maacama M7.55
 - ▣ Rodgers Creek-Healdsburg M7.19
 - ▣ San Andreas M8.04 (SAO+SAN+SAP+SAS fault segments)
- Earthquakes scenarios and are used for planning and coordinating emergency response. ShakeMap data are produced by the U.S. Geological Survey.

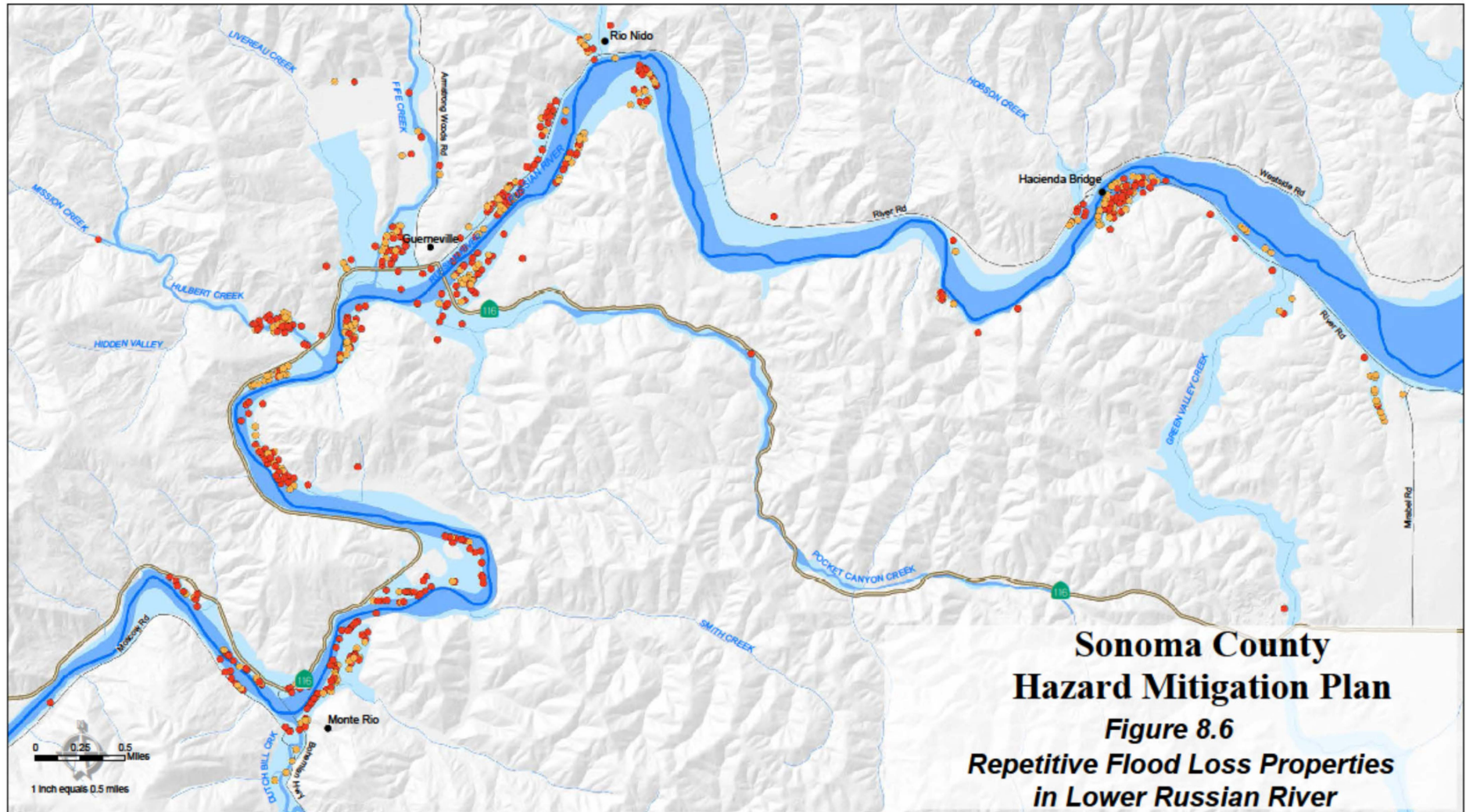
Earthquake Shaking Potential



Flood Hazard



- The flood hazard is defined by a combination of
 - ▣ FEMA Digital Flood Insurance Rate Map data
 - ▣ County's Russian River flood data
 - ▣ Flood Awareness Areas (the County's Functional Riparian Channels and Floodplains data).



Sonoma County
Hazard Mitigation Plan
Figure 8.6
Repetitive Flood Loss Properties
in Lower Russian River

Map Scale and Reproduction methods limit precision in physical features displayed. This map is for illustrative purposes only, and is not suitable for parcel-specific decision-making. The parcel boundary lines are not intended to represent surveyed data. Site-specific studies are required to show parcel-specific considerations.

No part of this map may be copied, reproduced, or transmitted in any form or by any means without written permission from the Permit and Resource Management Department (PRMD), County of Sonoma, California.

The F1 Floodline and 100 Year Zone or F2 Floodline data sets were obtained from the Federal Emergency Management Agency (FEMA), version 1/20/2015. For more information about the FEMA datasets, visit the FEMA homepage at <http://www.fema.gov>. Repetitive Loss data obtained from FEMA and is current as of 10/20/2015.

Author: PRMD, Geography & Services File Number: 2105-047AFPMO_RASPRMD Department Project/Comprehensive Planning/Hazard Mitigation Plan/MP 2016/L_Repulsive_Loss_Properties.mxd Date: 07/15/2016

Flood Zone Data

- Repetitive Loss Elevated Property
- Repetitive Loss Non-elevated Property
- 100-Year Zone
- Floodway

Base Map Data

- State Highway
- Main Arterials
- Unincorporated Communities
- Russian River
- Streams

County of Sonoma

Permit and Resource Management Department

2550 Ventura Avenue, Santa Rosa, California 95403
 707-565-1900 FAX 707-565-1103

SoCo Hazard Plan Timeline

These dates are subject to change.

- ❑ **1st Webinar (Public Input on Critical Plan Elements) ~ June 2021**
(Date of Webinar TBD)
- ❑ **Steering Committee Review of Draft Plan: ~approximately June 1, 2021 – June 15, 2021**
- ❑ **Public Comment Period: ~ June 15, 2021 – June 30, 2021**
- ❑ **Submit to FEMA for Review and Receive Feedback: ~July 1, 2021**
- ❑ **Board of Supervisors Public Hearing: December 7, 2021**

Questions?

Sonoma County Hazard Mitigation Website:

<https://sonomacounty.ca.gov/PRMD/Long-Range-Plans/Hazard-Mitigation-Update/>

Email: PRMD-HazardMitigation@sonoma-county.org

