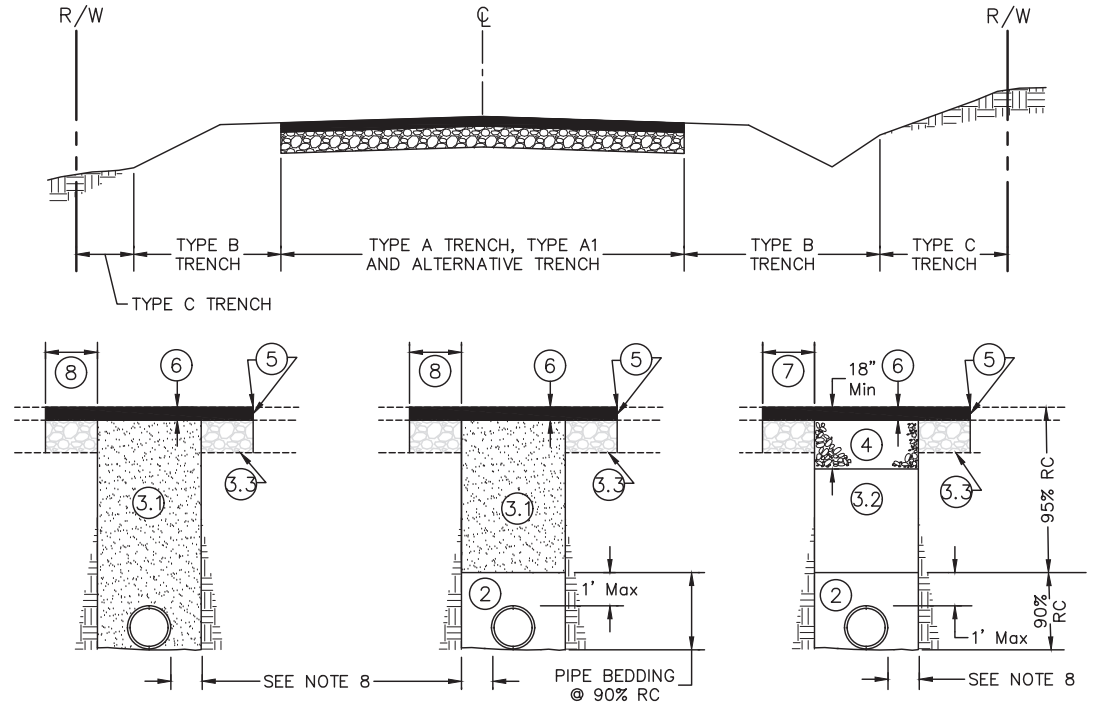


NOTES

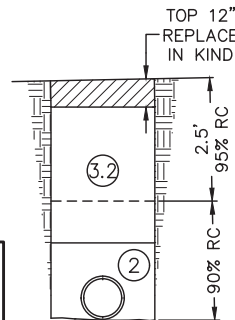
- REFERENCES MADE TO STATE STANDARD PLANS AND STANDARD SPECIFICATIONS ARE TO THE CURRENT EDITIONS; EXCEPT FOR ASPHALT MATERIALS REFERENCE MAY 2006 PLANS AND SPECIFICATIONS.
- PIPE BEDDING REQUIREMENTS AS REQUIRED BY AGENCY INSPECTING PIPE. STORM DRAIN BEDDING PER STATE STANDARD PLANS AND SPECIFICATIONS.
- TYPE A AND A1: SLURRY CEMENT BACKFILL PER SECTION 19 OF THE STATE STANDARD SPECIFICATIONS (MAY 2006).
- STRUCTURE BACKFILL MATERIAL MEETING THE SPECIFICATIONS IN SECTION 19 OF THE STATE STANDARD SPECIFICATIONS (MAY 2006) MAY BE USED AT CONTRACTOR'S OPTION. IF ALTERNATIVE IS USED, CONTRACTOR WILL PROVIDE A REPORT FROM A CIVIL ENGINEER LICENSED IN THE STATE OF CALIFORNIA, CERTIFYING THAT CONTRACTOR'S WORK MEETS SPECIFICATIONS. PEA GRAVEL SHALL NOT BE USED FOR STRUCTURE BACKFILL.
- COMPACT EXISTING BASE MATERIAL TO 95% RC TYP
- CLASS 2 AGGREGATE BASE MATERIAL. THICKNESS SHALL BE EQUAL TO THE THICKNESS OF THE EXISTING ROAD BASE, BUT IN NO CASE SHALL THE THICKNESS BE LESS THAN 18".
- TACK COAT S.S. 1 EMULSIFIED ASPHALT. SEAL ALL JOINTS WITH CRAFCO POLYFLEX TYPE-1, OR EQUAL, AFTER PAVING.
- TRENCH SHALL BE PAVED WITH ASPHALT CONCRETE WHOSE THICKNESS IS EQUAL TO THE THICKNESS OF THE EXISTING PAVEMENT, BUT IN NO CASE SHALL THICKNESS BE LESS THAN THAT SHOWN IN THE TRENCH A.C. PAVING TABLE. ASPHALT CONCRETE SHALL BE 1/2" TYPE A CONFORMING TO THE PROVISIONS IN SECTION 39, ASPHALT CONCRETE, OF THE CALTRANS STANDARD SPECIFICATIONS (MAY 2006).
- REPLACE WITH NATIVE MATERIAL RELATIVE COMPACTED TO 90%.
- REFER TO DRAWING NO. 219A FOR DIMENSION.
- STORM DRAIN: TWO (2) FEET; SIDE CLEARANCE MAY BE REDUCED TO A MINIMUM OF 6" WHEN SLURRY CEMENT BACKFILL IS USED. UTILITIES: TWO (2) FOOT MINIMUM TRENCH WIDTH UNLESS SLURRY BACKFILL IS USED.
- ANY PORTLAND CEMENT CONCRETE ROADWAY REMOVED DURING EXCAVATION SHALL BE REPLACED IN KIND AND THICKNESS PER STATE STANDARD PLANS P3A+P3B, LONGITUDINAL JOINT DETAILS.



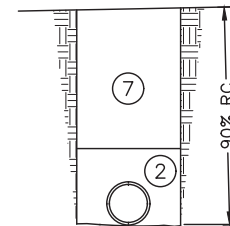
TYPE A
(STORM DRAIN)

TYPE A1
BACKFILL METHOD FOR ALL
OTHER UNDERGROUND FACILITIES

ALTERNATIVE TO
TYPE A AND A1
SEE NOTE 3.2



TYPE B



TYPE C

MINIMUM UTILITY COVER TABLE

UTILITY TYPE	Min. DEPTH OF COVER
STORM DRAIN CONDUITS	36"
SEWER SERVICE LATERALS	36"
WATER SERVICE LATERALS	36"
WATER LINE >2" DIAMETER	36"
SEWER MAIN LINES	36"
ELECTRICAL TRANSMISSION CABLES	36"
TELECOMMUNICATION CABLES	36"
GAS DISTRIBUTION LINES & SERVICE LATERALS	36"
GAS TRANSMISSION LINES	60"

TRENCH AC PAVING TABLE

STREET TYPE	MIN. A.C. THICKNESS
RESIDENTIAL/LOCAL	0.25'
COLLECTOR	0.35'
ARTERIAL	0.45'

COUNTY OF SONOMA
DEPARTMENT OF TRANSPORTATION
AND PUBLIC WORKS

TRENCH BACKFILL AND
PAVING DETAILS

DATE: MAY 2013
REV. MAR. 2020

SCALE: NONE

DRAWING NO.
219B