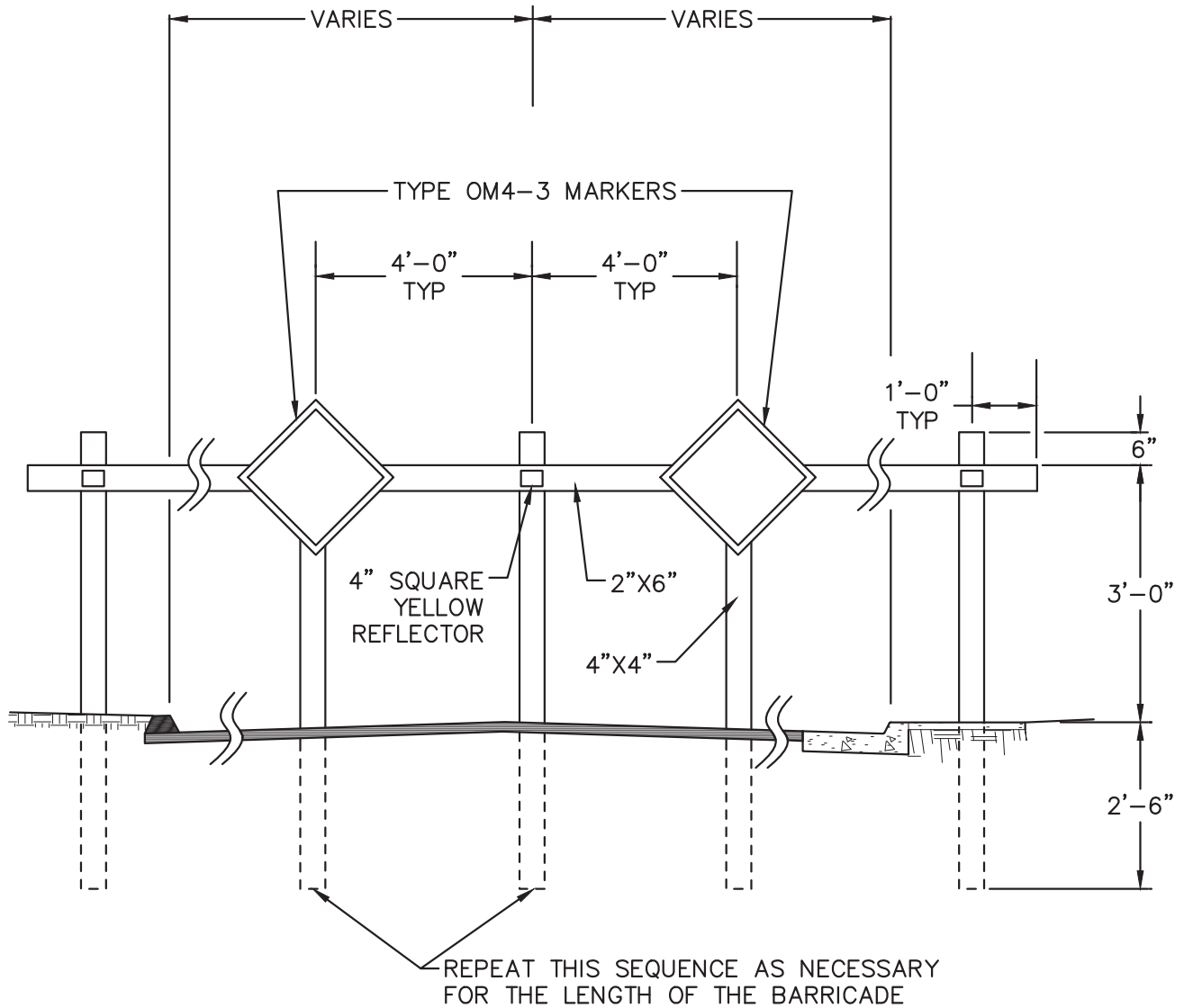


EXTEND TO BACK OF SIDEWALK OR AS DIRECTED BY ENGINEER



NOTE:

1. SEE DRAWING NO 714D FOR GENERAL NOTES.

COUNTY OF SONOMA  
DEPARTMENT OF TRANSPORTATION  
AND PUBLIC WORKS

TEMPORARY  
WOODEN BARRICADE

DATE: MAY 2004

REVISED: MAY 2007

APPROVED BY:

SCALE:  
NONE

DRAWING NO.

JH

714A