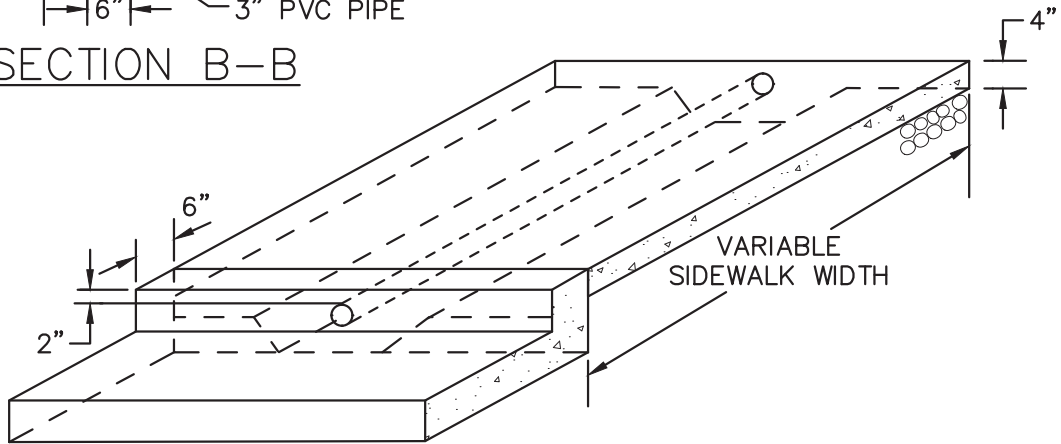
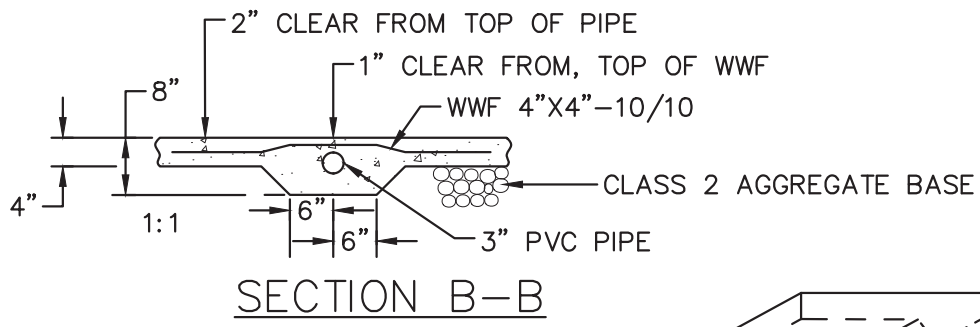
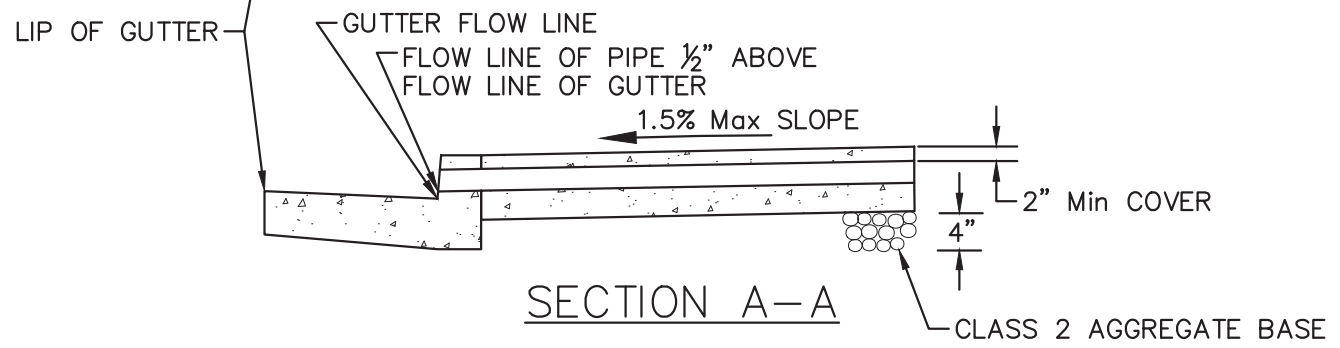
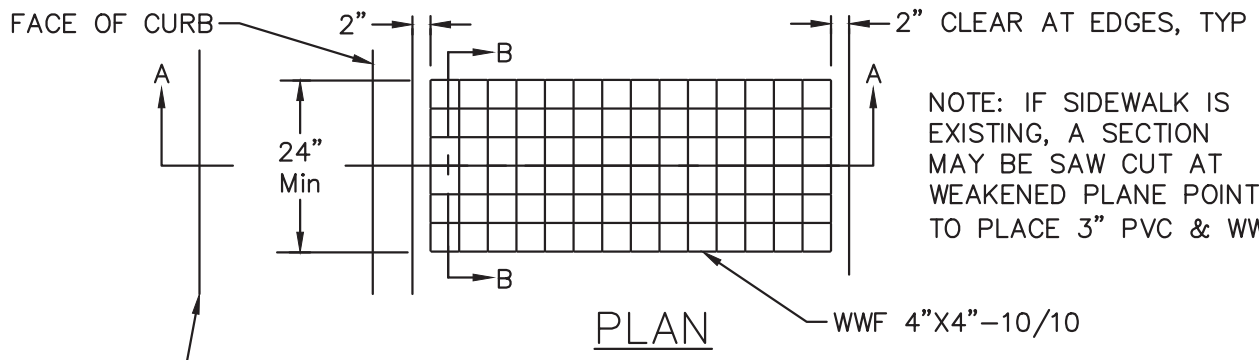


Xref: S:\ENGINEERING\Traffic\STAFF FOLDERS\Chet\Draft Revised Standards_Master.dwg Plot Date: Nov 12, 2020 at 08:10



NOTES:

1. LOCATION OF SIDEWALK DRAINS ARE APPROXIMATE AND MAY BE CHANGED BY THE ENGINEER AS REQUIRED BY SITE CONDITIONS.
2. SIDEWALK DRAIN TO BE 3" SCHEDULE 40 HEAVY WALL RIGID POLYVINYL CHLORIDE PIPE OR APPROVED EQUAL.
3. IF MORE THAN ONE DRAIN PIPE IS PLACED, WIDEN WIRE MESH PLACEMENT AND CONCRETE KEYWAY ACCORDINGLY.

COUNTY OF SONOMA
DEPARTMENT OF TRANSPORTATION
AND PUBLIC WORKS

SIDEWALK DRAIN DETAIL

DATE: MAY 2004	REVISED: JULY 2018
APPROVED BY: JH	SCALE: NONE DRAWING NO. 404