A gold-colored five-pointed star badge with a circular seal in the center. The seal features a figure holding a scale and a sword, surrounded by the words "FOR BIRLA" and "1843". The outer ring of the badge contains the text "SONOMA COUNTY" at the bottom and "SHERIFF'S OFFICER" at the top, separated by two blue stars. The background is a dark, semi-transparent overlay.

TRUTH Act and U.S. Immigration and Customs Enforcement

Detention Division

Detention Division process - ICE

- The Sheriff's Office Detention Division does not initiate contact with ICE
- All arrestees are booked and fingerprinted
- 2013 Secure Communities Federal data sharing program
 - The FBI provides local law enforcements biometric submissions to DHS ICE





ICE Form Routing

- ICE sends the Sheriff's Office a "request for advance notice of release" form.
- The Sheriff's Office evaluates this form utilizing our matrix which outlines SB 54 parameters
- The Incarcerated Person is provided with the outcome determination and ICE request forms
 - This form is available in 6 languages
- The Public Defender's Office and Conflict Counsel are notified, or attorney designated by the Incarcerated Person
- The Sheriff's Office advises the Public Defender's Office and ICE in the event of a release notification.

The Sheriff's Office Does **NOT**

- Hold or detain an Incarcerated Person beyond their release date or time due to a “request for advance notification of release.”
- Share or release non-public information to DHS ICE.
- Share or release home address to DHS ICE.
- Share or release victim information with DHS ICE.
- Have authority over ICE.





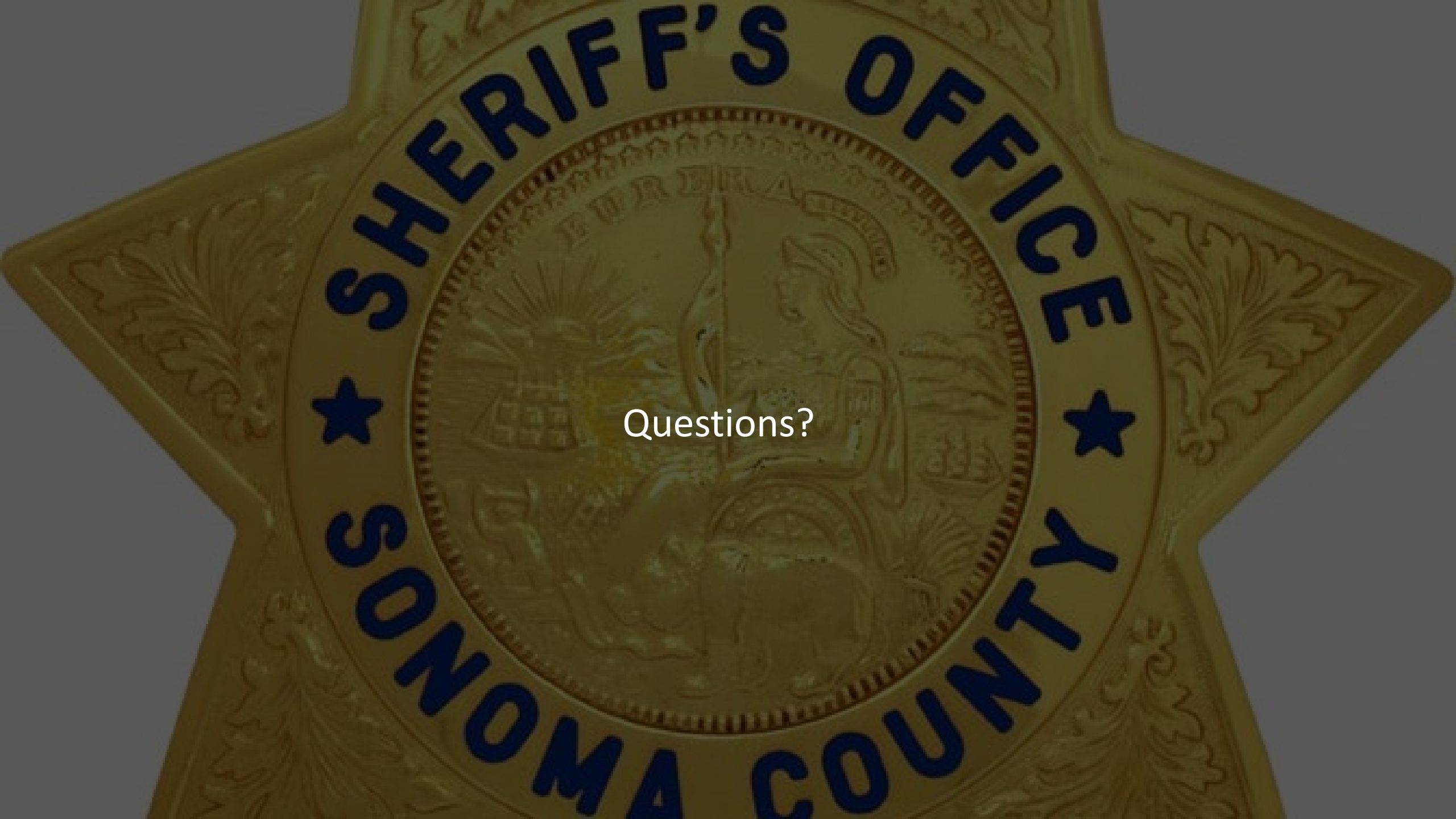
2023 Statistics

- 492 Notification Requests
- 72 Responses to Notification Requests
- 1 Arrest by ICE
- 1 United States District Court Warrant

2023 Statistics

CRIME TYPE	TOTAL
VIOLENCE	27
FELONY DUI	13
SEX OFFENSES	7
WEAPONS	7
ROBBERY	4
DRUG SALES	4
FELONY EVADING	2
KIDNAPPING	1
ARSON	1
MISC	6





Questions?