

COUNTY OF SONOMA - JOB DEMANDS ANALYSIS

JOB CLASSIFICATION: WA Fleet Equipment Mechanic I (5101), II (5102), and Lead (5103)
DEPARTMENT: WTR
PHYSICAL DEMAND STRENGTH RATING: Heavy

DATE COMPLETED: January 2025
DIVISION: Operations and Maintenance/Fleet

INSTRUCTIONS TO MEDICAL PROVIDERS COMPLETING THIS FORM:

Please use the “Medical Provider Use Only” columns to the right of each section and the “Medical Provider’s Comments & Signature” Section on the signature page to provide work restrictions by indicating whether there is some portion of each function that the employee can perform; designating whether each restriction is temporary or permanent; and, if restriction is temporary, stipulating the expected duration of work restriction(s). To finalize the form, please provide the name of the employee evaluated and additional comments, as appropriate, then sign and date where indicated.

FREQUENCY RATING:

Frequency	Percentage of time per shift	Repetition (# times per shift)	8 Hr Shift	9 Hr Shift	10 Hr Shift	12 Hr Shift
Never/Not Required (N)	n/a	n/a	n/a	n/a	n/a	n/a
Occasionally (O)	1 - 33%	1 – 100	0 - 2.5	0 - 3	0 - 3.5	0 – 4
Frequently (F)	34 - 66%	100 – 500	2.5 - 5.5	3 - 6	3.5 - 7	4 – 8
Continuously (C)	67 - 100%	500+	5.5 – 8	6 - 9	7 - 10	8 - 12

PART 1 - JOB DUTIES/FUNCTIONS:

A. Job Duty/Function	B. Job Duty #	C. Freq Rating	D. Equipment or tools used to perform (Describe)	E. Specialized Expertise, License, Certification Required? (Describe)	F. Essential or Non- Essential	Medical Provider Use Only: For each job duty/function, indicate in this column “Can Perform”, is “Temporarily Restricted” from performing, or is “Permanently Restricted” from performing.
Working conditions/environment: While performing the following duties, employees work in a busy & noisy shop environment with vehicles and equipment moving in and out continuously; incumbents may occasionally work in the field under varying conditions, including all weather conditions such as prolonged and direct sun exposure, rain, fog, or other severe weather; incumbents may work on wet, muddy, and uneven surfaces in both daylight and dark/dim conditions.						
Fleet Equipment Mechanic I: Under general supervision, performs the following duties (#4 - #16) related to the routine work in the diagnoses, maintenance, overhaul, and	1	C	Computer, phone, tools	Valid CA Class C Driver’s License	E	

A. Job Duty/Function	B. Job Duty #	C. Freq Rating	D. Equipment or tools used to perform (Describe)	E. Specialized Expertise, License, Certification Required? (Describe)	F. Essential or Non- Essential	Medical Provider Use Only: For each job duty/function, indicate in this column "Can Perform", is "Temporarily Restricted" from performing, or is "Permanently Restricted" from performing.
repair of light fleet vehicles and equipment; works primarily on light fleet vehicles and equipment powered by a variety of sources, including gasoline, diesel, electric, and alternate fuels; during employment, gains necessary knowledge and skills to work on more complex medium and heavy fleet vehicles and equipment.						
Fleet Equipment Mechanic II: Under general supervision, performs the following duties (#4 - #17) related to routine and complex work in the diagnoses, maintenance, overhaul, and repair of light fleet vehicles, on-road and off-road equipment, trailers, and other medium and heavy-duty fleet vehicles and equipment powered by a variety of sources, including gasoline, diesel, electric, and alternate fuels; incumbents expected to perform the full range of duties, while exercising considerable judgment and independence.	2	C	Computer, phone, tools	Valid CA Class C Driver's License upon hire; valid CA Class A Driver's License w/in 6 months of employment; CCDET I Course w/in 1 year of employment	E	
Lead Fleet Equipment Mechanic: Performs the following duties (#4 - #18) related to routine and complex work in the diagnoses, maintenance, overhaul, repair, and related work of the full spectrum of WA fleet vehicles and equipment; performs the most complex mechanic duties; performs lead work duties such as assigning and reviewing the work of Fleet Equipment Mechanics I & II, and WA Maintenance Workers/related staff as applicable.	3	C	Computer, phone, tools	Valid CA Class C Driver's License upon hire; valid CA Class A Driver's License w/in 6 months of employment; CCDET I Course, ASE A1-A8 certification, and ASE T2-T8 certification w/in one year of employment	E	
The following mechanic duties (#5 - #10 & #17) may require incumbents to: stand for long periods of time, occasionally standing with arms overhead; bend at waist/neck over vehicle fenders, engines, etc.; crawl under vehicles to perform various repair and maintenance duties; reach	4	F	Tools	N/A	E	

A. Job Duty/Function	B. Job Duty #	C. Freq Rating	D. Equipment or tools used to perform (Describe)	E. Specialized Expertise, License, Certification Required? (Describe)	F. Essential or Non- Essential	Medical Provider Use Only: For each job duty/function, indicate in this column "Can Perform", is "Temporarily Restricted" from performing, or is "Permanently Restricted" from performing.
above and below waist; kneel; lift and move parts weighing up to 80lbs alone, with coworker assistance, mechanical lift, or other lifting devices; use hand and power tools.						
Using good judgement, diagnoses routine electronic and mechanical problems on vehicles either visually or using diagnostic equipment; make recommendations for service/repair needed.	5	F	Diagnostic testing equipment, small and large hand tools, power tools	See Column E, Rows 1-3	E	
<p>Inspects vehicles/equipment for safety and performs routine servicing and preventative maintenance of fleet vehicles and equipment including, but not limited to, the following tasks: checks and changes oil and filters; applies lubes and greases; services emission control devices; checks fluids; performs alignments; replaces parts as needed; adjusts brakes, steering, clutches, winches, tracks, and related operational and moving parts, performs oil analysis testing; performs other servicing/maintenance duties as needed.</p> <p>Fleet Equipment Mechanic II and Lead: performs routine servicing and preventative maintenance functions specific to medium/heavy fleet vehicles and equipment in addition to light fleet vehicles/equipment.</p>	6	F	Small and large hand tools, power tools, jacks, hoists, lifts	See Column E, Rows 1-3	E	
<p>Performs repairs including, but not limited to: troubleshooting mechanical systems; repairing/tuning-up engines; repairing and replacing exhaust systems; repairing transmissions, suspension systems, clutch and brake systems, alternator and starter systems, pumps, steering systems, electrical systems, and other major automobile components as needed.</p> <p>Fleet Equipment Mechanic II and Lead: performs repairs specific to medium/heavy fleet vehicles and equipment in addition to light fleet vehicles/equipment.</p>	7	O	Small and large hand tools, power tools, computer, jacks, hoists, lifts	See Column E, Rows 1-3	E	
May perform acetylene, arc, and electric welding to fit, fabricate, or repair parts.	8	O	Welding equipment, tools, and safety gear	See Column E, Rows 1-3	E	

A. Job Duty/Function	B. Job Duty #	C. Freq Rating	D. Equipment or tools used to perform (Describe)	E. Specialized Expertise, License, Certification Required? (Describe)	F. Essential or Non- Essential	Medical Provider Use Only: For each job duty/function, indicate in this column "Can Perform", is "Temporarily Restricted" from performing, or is "Permanently Restricted" from performing.
Diagnoses and repairs hydraulics and vacuum problems on vehicles used for water delivery and wastewater collection; appropriately disposes of wastewater left in tanks or trucks; applies safety rules for handling wastewater. Fleet Equipment Mechanic I: learns these skills on the job Fleet Equipment Mechanic II and Lead: expected to be able to perform these duties independently.	9	O	Small and large hand tools, power tools, computer, jacks, hoists, lifts	See Column E, Rows 1-3	E	
Responds to emergency requests in the field; drives to off-site locations including rugged, remote, and off-road locations; determines feasibility of performing repairs on site.	10	O	Phone, hand tools, power tools, jacks, etc.	See Column E, Rows 1-3	E	
Determines parts needed for repairs: researches and orders parts; stocks inventory and updates computerized inventory management systems; plans ahead to meet seasonal inventory needs; reports defective inventory.	11	F	Computer, phone	See Column E, Rows 1-3	E	
Communicates by phone, email, and in person with co-workers, supervisors, vendors, and customers to coordinate and schedule repairs, provide status updates, order/manage/return parts, and schedule outsourced work; must be able to communicate effectively and work well with others; must be able to perform service writer duties (i.e., effectively assess and relay customer needs).	12	F	Computer, phone	N/A	E	
Plans, schedules, implements, adapts, executes, and coordinates workflow for the facility including: checks in new vehicles; enters data into Fleet computer databases; maintains accurate electronic and paper records and files; works with CMMS system to perform, update, and enter work orders.	13	F	Computer, phone, file box	N/A	E	
Continuously observes safety practices and procedures, including wearing appropriate safety gear and reporting or correcting unsafe conditions; performs routine maintenance on shop equipment and cleans/organizes the shop to maintain a safe working environment.	14	C	PPE, cleaning supplies, tools needed for routine maintenance	N/A	E	

A. Job Duty/Function	B. Job Duty #	C. Freq Rating	D. Equipment or tools used to perform (Describe)	E. Specialized Expertise, License, Certification Required? (Describe)	F. Essential or Non- Essential	Medical Provider Use Only: For each job duty/function, indicate in this column "Can Perform", is "Temporarily Restricted" from performing, or is "Permanently Restricted" from performing.
Participate in continuous training, research, study, and reading, both on and off-site, to keep current on vehicle repair standards, and best practices, and to maintain applicable working knowledge and certifications.	15	O	Computer, phone	Continued education is required to maintain certifications	E	
May train new employees on day-to-day procedures; serves as a technical resource for Maintenance Workers and interns as needed.	16	O	Computer, phone	See Column E, Rows 1-3	N	
Drives county vehicles/pick-up trucks to, from, and around Agency facilities to pick up and return vehicles needing maintenance.	17	F	Phone, vehicle, pick-up truck	Valid CA Driver's License	E	
<p>Fleet Equipment Mechanic II and Lead: Provides maintenance and repairs on various types of medium/heavy trucks and equipment such as water tank trucks, vac trucks, backhoes, excavators, bulldozers, wheel loaders, dump trucks, crane trucks, skid-steer loaders, graders, trenchers, chipper trucks, water pumps, portable water pumps, irrigation equipment, submersible pumps, portable generators, and trailers.</p> <p>Fleet Equipment Mechanic I: learns these skills during employment.</p>	18	F	Small and large hand tools, power tools, jacks, hoists, lifts	See Column E, Rows 1-3	E	
<p>Lead Fleet Equipment Mechanic: Trains, monitors, and assists in evaluating the performance of Fleet Equipment Mechanics I & II; acts as a lead worker in the coordination of day-to-day operations; assists the supervisor regarding workload and compliance with established policies, procedures, and vehicle and equipment specifications; assists with assigning service and repair work to staff according to ability; provides technical advice and assistance on complex work assignments; may serve as the interim supervisor in the supervisor's absence.</p>	19	F	Computer, phone	See Column E, Rows 1-3	E	

PART 2: PHYSICAL DEMANDS

Activity	Examples of Duties/Functions Requiring Activity	FREQUENCY RATING Never, Occasional; Frequent, or Constant	MEDICAL Can Perform	PROVIDER Temporarily Restricted	USE ONLY: Permanently Restricted
1 Sitting (e.g., using computer/phone; driving)	2, 3, 10-13, 15, 16, 19	O			
2 Walking (e.g., diagnosing, maintaining and repairing vehicles and equipment; gathering parts and tools; inspecting vehicles and equipment; taking inventory; on even and uneven services to access vehicles and equipment in the field)	1-4, 6, 10, 14, 18, 19	F			
3 Running	N/A	N			
4 Standing (e.g., diagnosing, maintaining and repairing vehicles and equipment; welding; taking inventory; ordering supplies and parts)	1-19	F			
5 Bending-Neck (e.g., using computer/phone; driving; diagnosing, maintaining and repairing vehicles and equipment; inspecting vehicles and equipment; welding; taking inventory; ordering supplies and parts)	1-19	F			
6 Bending-Waist (e.g., using computer/phone; driving; diagnosing, maintaining and repairing vehicles and equipment; inspecting vehicles and equipment; welding)	1-4, 6-9, 18	O			
7 Squatting (e.g., using computer/phone; driving; diagnosing, maintaining and repairing vehicles and equipment; inspecting vehicles and equipment; welding)	1-4, 6-9, 18	O			
8 Climbing (e.g., diagnosing, maintaining and repairing trucks and equipment; inspecting vehicles and equipment)	1-4, 6-9, 18	O			
9 Kneeling (e.g., diagnosing, maintaining and repairing trucks and equipment; inspecting vehicles and equipment)	1-4, 6-9, 18	O			
10 Crawling (e.g., under vehicles and equipment for diagnosing, maintaining and repairing; inspecting vehicles and equipment)	1-4, 6-9, 18	O			
11 Twisting-Neck (e.g., using computer/phone; driving; diagnosing, maintaining and repairing vehicles and equipment; inspecting vehicles and equipment; welding; taking inventory; monitoring safety practice and performance of mechanics)	1-19	F			
12 Twisting-Waist (e.g., performing maintenance/repair tasks on vehicles or equipment in the shop or out in the field)	1-10, 18	O			
13 Repetitive Hand Use	1-19	F			
14 Simple Grasping-Right Hand (e.g., holding tools, diagnostic equipment, phone)	1-19	C			
15 Simple Grasping-Left Hand (e.g., holding tools, diagnostic equipment, phone)	1-19	C			

Activity	Examples of Duties/Functions Requiring Activity	FREQUENCY RATING Never, Occasional; Frequent, or Constant	MEDICAL Can Perform	PROVIDER Temporarily Restricted	USE ONLY: Permanently Restricted
16 Power Grasping-Right Hand (e.g., performing maintenance/repair tasks on vehicles and equipment)	1-10, 18	O			
17 Power Grasping-Left Hand (e.g., performing maintenance/repair tasks on vehicles and equipment)	1-10, 18	O			
18 Fine Manipulation-Right Hand (e.g., using diagnostic equipment, computer or phone; performing wiring/electrical work on vehicles and equipment; welding)	1-19	F			
19 Fine Manipulation-Left Hand (e.g., using diagnostic equipment, computer or phone; performing wiring/electrical work on vehicles and equipment; welding)	1-19	F			
20 Pushing and Pulling-Right Hand (e.g., moving mechanic table; moving disabled vehicles or equipment; moving jack stands or column lifts; using compressed air hoses; hitching/unhitching trailers)	1-10, 18	O			
21 Pushing and Pulling-Left Hand (e.g., moving mechanic table; moving disabled vehicles or equipment; moving jack stands or column lifts; using compressed air hoses; hitching/unhitching trailers)	1-10, 18	O			
22 Reaching-Above Shoulder Level (e.g., inspecting vehicles or equipment; using compressed air hoses; performing maintenance or repairs on vehicles or equipment on lifts; inventory of parts stored on higher shelves; washing vehicles and equipment)	1-4, 6-10, 18	F			
23 Reaching-Below Shoulder Level (e.g., inspecting vehicles or equipment; using phone or computer; diagnosing, maintaining or repairing vehicles and equipment; inventory on lower shelves; washing vehicles and equipment)	1-19	F			
24 Lifting-up to 10 lbs. (e.g., using tools or diagnostic equipment; using phone; using flashlight during vehicle or equipment inspection; installing/replacing routine maintenance items, windshield wipers, wiper fluid, coolant; air and oil filters)	1-19	F			
25 Lifting-11-25 lbs. (e.g., placing ladders and step stools; moving mower tires and rims)	1-10, 18	F			
26 Lifting-26-50 lbs. (e.g., installing small batteries; repairing/replacing brake rotors for smaller vehicles)	1-4, 6-10, 18	O			
27 Lifting 51-75 lbs. (e.g., pulling/placing passenger vehicles tire and rim; installing larger batteries; placing jack stands)	1-4, 6-10, 18	O			

Activity	Examples of Duties/Functions Requiring Activity	FREQUENCY RATING Never, Occasional; Frequent, or Constant	MEDICAL Can Perform	PROVIDER Temporarily Restricted	USE ONLY: Permanently Restricted
28 Lifting 76-100 lbs. (e.g., repairing/replacing front brake rotor for F150 Dual non 4WD)	1-4, 6-10, 18	O			
29 Lifting 100 + lbs. (Team lift or lift assist used for items that weigh greater than 100lbs.; tire and rim for F150)	N/A	N			
30 Carrying 0-10 lbs. (e.g., using tools or diagnostic equipment; using phone; using flashlight during vehicle or equipment inspection; installing/replacing routine maintenance items, windshield wipers, wiper fluid, coolant; air and oil filters)	1-19	F			
31 Carrying 11-25 lbs. (e.g., placing ladders and step stools; moving mower tires and rims)	1-10, 18	F			
32 Carrying 26-50 lbs. (e.g., installing small batteries; repairing/replacing brake rotors for smaller vehicles)	1-10, 18	O			
33 Carrying 51-75 lbs.	N/A	N			
34 Carrying 76-100 lbs.	N/A	N			

PART 3: SENSORY REQUIREMENTS

Activity	Examples of Duties/Functions Requiring Activity	FREQUENCY RATING Never, Occasional; Frequent, or Constant	MEDICAL Can Perform	PROVIDER Temporarily Restricted	USE ONLY Permanently Restricted
1 Functional vision, normal or corrected (e.g., driving; towing equipment; working on equipment; walking in shop/field; washing cars and equipment)	1-19	C			
2 Functional color vision, normal or corrected (e.g., wiring diagrams and repairs; electrical; identifying fluids)	1-3, 6, 7, 9, 10, 18	O			
3 Functional night vision, normal or corrected (e.g., early morning or after hours; performing emergency work in severe weather)	1-19	O			
4 Functional hearing, normal or corrected (e.g., diagnosing issues with vehicles or equipment; maintain safety/sense danger while working in shop or out in the field; communicate with co-workers, public, clients, vendors)	1-7, 9-19	C			
5 A sense of smell or taste (Smell Only) (e.g., diagnosing issues with vehicles or equipment; maintain safety/sense danger while working in shop or out in the field)	1-10, 14, 18	C			

PART 4: COMPREHENSION LEVEL

Activity	FREQUENCY RATING Never, Occasional; Frequent, or Constant	MEDICAL Can Perform	PROVIDER Temporarily Restricted	USE ONLY Permanently Restricted
1 Follow Oral Instructions	F			
2 Follow Written Instructions	F			
3 Required to sustain concentration	F			

PART 5: NATURE OF TASKS

Activity	FREQUENCY RATING Never, Occasional; Frequent, or Constant	MEDICAL Can Perform	PROVIDER Temporarily Restricted	USE ONLY Permanently Restricted
1 Follow set procedures	C			
2 Organize own work	F			
3 Able to ask questions or request assistance when needed	F			
4 Required to make decisions independently	F			
5 Required to train and/or lead other staff	O			
6 Required to direct other staff (e.g., <i>planning, goal setting, performance</i>) (Lead Fleet Equipment Mechanic only)	O			

PART 6: WORK PACE

Activity	FREQUENCY RATING Never, Occasional; Frequent, or Constant	MEDICAL Can Perform	PROVIDER Temporarily Restricted	USE ONLY Permanently Restricted
1 Tightly scheduled and rapid pace of work activities at high volume	F			
2 Meet time sensitive deadlines	F			
3 Long and/or irregular hours	O			
4 Limited/unpredictable opportunity for breaks	N			
5 Required to perform on-call or emergency work	O			

PART 7: COMPLEXITY/VARIABILITY

Activity	FREQUENCY RATING Never, Occasional; Frequent, or Constant	MEDICAL Can Perform	PROVIDER Temporarily Restricted	USE ONLY Permanently Restricted
1 Variable and unpredictable workflow	F			
2 Attention divided by issues requiring multi-tasking	F			
3 Work requires precise attention to detail	C			
4 Use of judgment in routine matters	F			
5 Requires use of judgment in adapting procedures from one task to another	F			
6 Possible legal ramifications associated with work activities or work product	O			

PART 8: INTERACTIONS WITH OTHERS

Activity	FREQUENCY RATING Never, Occasional; Frequent, or Constant	MEDICAL Can Perform	PROVIDER Temporarily Restricted	USE ONLY Permanently Restricted
1 Works with others (e.g., <i>co-workers, other departments/agencies, public</i>)	C			
2 Interactions limited to giving/receiving information	F			
3 Interactions exceed giving/receiving information (e.g., <i>advises, persuades, justifies</i>)	O			
4 Interactions occur under circumstances of emotional stress	N			
5 Risk of confrontation with violent or assaultive clients or customers	N			

PART 9: ENVIRONMENTAL FACTORS/WORKING CONDITIONS:

Activity	FREQUENCY RATING Never, Occasional; Frequent, or Constant	MEDICAL Can Perform	PROVIDER Temporarily Restricted	USE ONLY Permanently Restricted
1 Work Inside	F			
2 Work Outside	F			
3 Extreme Heat (above 100 degrees)	O			
4 Extreme Cold (below 32 degrees)	O			
5 Excessive Noise (must raise voice to be heard)	F			
6 Vibration (e.g., jack hammer, hammer drill, chainsaw, etc.)	O			
7 Dust, Vapors, Fumes, Smoke	O			
8 Silica, asbestos, etc.	N			
9 Solvents (e.g., gas, turpentine, etc.)	F			
10 Grease, oils	F			
11 Acidic, Caustic Solutions (e.g., car/truck batteries)	O			
12 Pesticides	N			
13 Explosives (e.g., dynamite, bomb, etc.)	N			
14 Cleaning supplies, abrasives	O			
15 Other Chemicals (e.g., drugs and other contraband)	N			
16 Human Blood, Body Tissues, or Fluids (e.g., working with wastewater/vac trucks)	O			
17 Human Wastes (e.g., vac trucks)	O			
18 Animal Blood, Body Tissues, or Fluids (e.g., working with wastewater/vac trucks)	O			
19 Animal Wastes (e.g., working with wastewater/vac trucks)	O			
20 Biological Toxins (e.g., poison ivy, poison oak, anthrax, etc.)	O			
21 Insect Bites (e.g., ticks, mosquitos, spiders, etc.)	O			
22 Biomedical Waste	N			
23 Ionizing Radiation	N			
24 Non-Ionizing Radiation	N			
25 Electrical Energy (e.g., hybrid or electric vehicles, air bag mechanism)	F			
26 Walking on uneven, slippery, or rough surfaces	O			
27 Proximity to moving mechanical parts (e.g., equipment, machinery)	C			
28 Proximity to moving vehicles or objects	C			
29 Heights (e.g., rooftop, ladders, scaffolding, etc.)	O			
30 Contact with water, other liquids, humid conditions - not weather related	O			
31 Work Below Ground (e.g., excavation, trench, etc.)	N			
32 Potential exposure to airborne infectious diseases (e.g., clinics, labs, corrections)	N			
33 Operates non-commercial motor vehicles (cars, trucks)	F			
34 Operates commercial vehicles – CDL Class __A__ Endorsements __Tanker & Trailer__ (Required for Fleet Equipment Mechanic II and Lead w/in 6 months of employment)	F			
35 Operates passenger van to transport clients, inmates, etc.	N			
36 Pulls non-commercial trailers or equipment	O			
37 Operates heavy equipment	F			
38 Other:	N/A			

PART 10: MEDICAL SCREENING, SURVEILLANCE AND VACCINATION REQUIREMENTS:

Please check each of the medical screening, surveillance, and vaccination requirements that apply to the

position, and indicate if the requirement applies pre-employment/pre-placement only, or whether there are additional requirements after hire.

Medical Screening, Surveillance or Vaccination	Pre-Hire	Post-Hire	Frequency (one time, annual, etc.)
1 Audiometric Testing	X		
2 DOT Commercial Driver Drug and Alcohol Screening		X (post hire w/in 6 months for II and Lead)	Random
3 DOT Commercial Driver Physical Exam		X (post hire w/in 6 months for II and Lead)	Every 2 years unless indicated as more frequent by physician
4 Respirator Physical Exam	X		Annual or as recommended by physician
5 Respirator Questionnaire – Short			
6 Respirator Questionnaire – Standard	X		Annual
7 Blood lead level			
8 Hazardous Waste/Emergency Worker physical			
9 Heavy metal screen (mercury, lead, arsenic)			
10 HINT Hearing Noise Sensitivity Testing			
11 Tuberculosis skin test			
12 Vaccine: MMR			
13 Vaccine: Hepatitis B	X	X	Offered
14 Vaccine: Influenza			
15 Vaccine: Meningococcal			
16 Vaccine: Pneumococcal			
17 Vaccine: Rabies			
18 Vaccine: Rabies Titer			
19 Vaccine: Tdap			
20 Vaccine: Chickenpox			

PART 11: ADDITIONAL INFORMATION, PICTURES, ETC.

Weight Categories	Most Frequently Used Tools	Most Frequently Used Materials
10 lbs. and under	Wrenches, pliers, screwdrivers, socket sets, Allen keys, hex bit sets, ratchets, breaker bars, diagnostic handheld scanners	Contained liquids (e.g., oil, gas)
11 – 25 lbs.	Pry bars, crowbars, hammers, metal cutting tools, small power tools	N/A
26 – 50 lbs.	Large power tools	Batteries
51 – 75 lbs.	N/A	Batteries, tire & rim (Ford Escape), tire (F150)
76 – 100 lbs.	N/A	Front brake rotor (F150)
Over 100 lbs. (any tools or materials weighing over 100 lbs. is lifted, carried,	Forklift, vehicle lift	Semi-trucks, tractors, trailers, service trucks, water pumps, generators, backhoes, excavators, cranes, tanker trucks, VacCon trucks, ATV, forklifts, truck tire + rim

pushed, or pulled with assistance of a colleague, a mechanical lift, or another lifting device)		
---	--	--

CERTIFICATIONS NEEDED:

- **Fleet Equipment Mechanic I:**
 - Valid Class C Driver's License

- **Fleet Equipment Mechanic II:**
 - Valid CA Class C Driver's License upon hire
 - Valid CA Class A Driver's License w/in the 6 months of employment
 - CA Counsel on Diesel Education and Technology (CCDET) I Course w/in 1 year of employment

- **Lead Fleet Equipment Mechanic:**
 - Valid CA Class C Driver's License upon hire
 - Valid CA Class A Driver's License w/in 6 months of employment
 - CA Counsel on Diesel Education and Technology (CCDET) I Course w/in 1 year of employment
 - National Institute for Automotive Service Excellence (ASE) Master Automotive Technician (A1-A8) certification
 - National Institute for Automotive Service Excellence (ASE) Master Medium and Heavy Truck Technician (T2-T8) certification



SCWA Fleet Equipment Shop with Samples of Vehicles and Equipment Serviced



Light Equipment/Vehicle Service Bay
- Easy access to hoses over-head



Sample of Equipment/Vehicle Serviced



Sample of Equipment/Vehicle Serviced



Lift Available in Light Equipment/Vehicle Service Bay



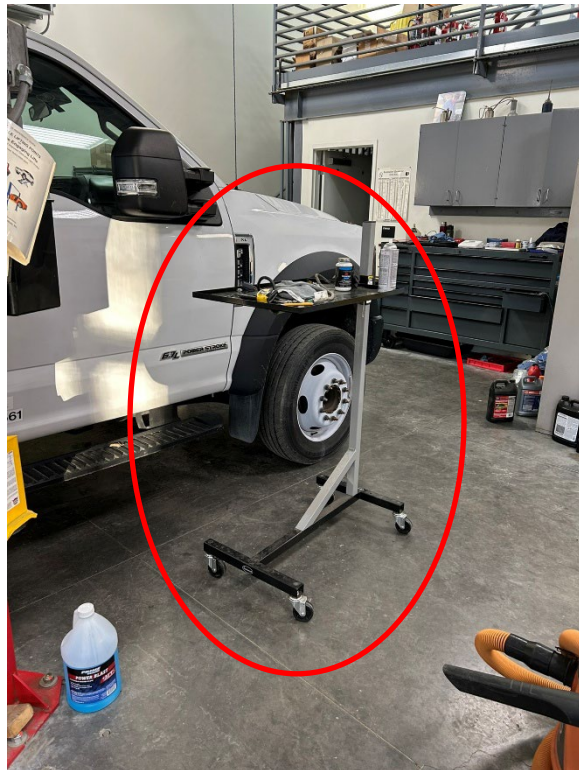
Ladders & Stepladders to Access Equipment/Vehicles
- Up to 10' ladders; 23 lbs.



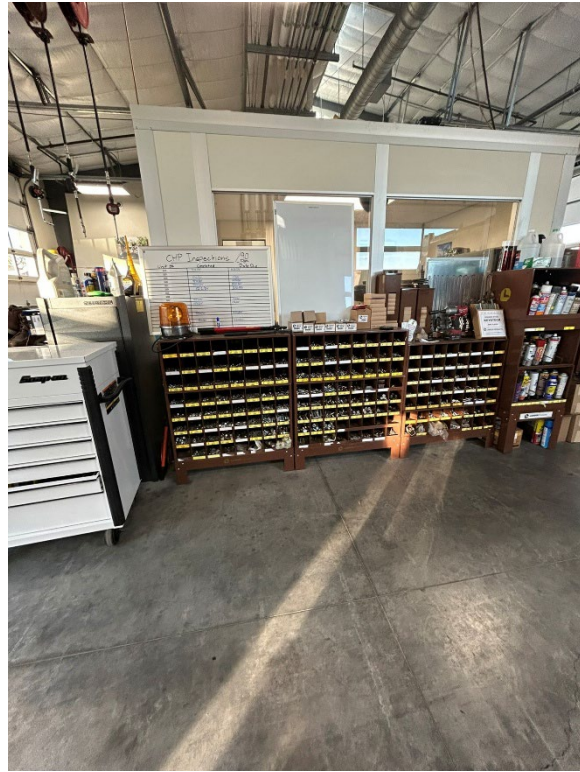
Batteries: Large – 58 lbs.; Small – 45 lbs.



Tool Chest with Casters
- Minimal force required to push/pull



Adjustable Height Rolling Mechanic Table (circled)



Truck Tire and Rim

- 115 lbs. From floor to 48"
- 2-person lift or lift assist device used for lifts over 100 lbs.

Truck Tire = 60 lbs.

Tire and Rim for Ford Escape = 52 lbs.

Storage – Parts for Repair



Truck on Lift for Brake Repair

Front Brake Rotor- F150 Dual (Non 4WD) = 77.2 lbs.
Brake Rotor for Car Fleet = 38 lbs.



Vehicle/Equipment Wash Bay



Trailers Serviced by Fleet Equipment Mechanics
- Will hook-up/un-hook; Load/unload trailers



Examples of Equipment Serviced by Fleet Equipment Mechanics



Forklift

Portable Generator Serviced by Fleet Equipment Mechanics

- Used to move heavy items serviced by Fleet Equipment Mechanics



Tailgate of Chipper Truck for Repair

Chipper Truck Waiting for Tailgate Repair

- Weight of tailgate = 200+ lbs.
- Moved with forklift



Chipper Truck for Repair

- Tailgate hinges to be welded onto truck and tailgate re-attached.



Sample of the Fleet of Equipment/Vehicles Serviced by Fleet Equipment Mechanics



Landscaping Equipment Serviced by Fleet Equipment Mechanics

- Equipment loaded/unloaded; trailer hooked/unhooked



Fleet Equipment Mechanic May Service Equipment in the Field



25-ton Jack Stands

- 63 lbs. each
- Carry or slide up to 10 feet



Mobile Column Lift/Hoist

- Push force = 50.67 lbs. / Pull force = 45.67 lbs.