



Monte Rio/Villa Grande Waste water Solutions Pilot Project & Feasibility Study Update

Agenda

- I. Welcome and Opening Remarks
- II. Re-introduction to Wastewater Efforts in Monte Rio / Villa Grande
 - History, Background, and Context
- III. Study Area Analysis Presentation
 - First Phase of the Feasibility Study
- IV. Resource Panel
 - Q & A Session
- V. Recap and Review of Emerging Questions
- VI. Next Steps and Closing Remarks

About the Meeting

The County of Sonoma is committed to creating a safe and inclusive environment free from disruption. We will not tolerate any hateful speech or actions and are well staffed to monitor that everyone is participating respectfully. If necessary, we will immediately end the meeting.

Polling: Instructions

Go to
www.menti.com

Enter the code

6966 7667



Or use QR code

<https://www.menti.com/aln97w8vy6qz>

Polling: About You

Polling Question 1: How long have you lived in Monte Rio or Villa Grande or West County?

Polling Question 2: What is your interest in participating in this workshop?





Welcome





Re-introduction to Wastewater Efforts in Monte Rio / Villa Grande

History, Background, and Context

Getting Up To Speed

Mike Thompson

- Assistant General Manager, Sonoma County Water Agency
- Involved with Lower Russian River Citizens Advisory Group since formation



Successful Public Projects

- Common Understanding
- Collaborative Framework
- Elected Official Support and Leadership
- Thorough Planning & Design Process
- Outside Funding

Getting Up To Speed

- Community Efforts
- Regulatory Context
- Collaboration
- Pilot Project
- Summary



Community Efforts

- Stand-Alone Wastewater System
- Need for a solution
 - Status quo not sustainable
 - Care about the River
 - Involved in a solution
- **Key Point #1: Consistent Community Efforts**
Monte Rio and Villa Grande members spent decades working on solutions for their communities.



Regulatory Context



Presence of
pathogens



Regional Board
required to
address:
TMDL Action Plan



Compliance Periods:
15 Years for Individuals
20 Years for
Community Systems

Regulatory Context

Key Point #2: River Health

Pathogen levels in the river require the Regional Board to develop plans to reduce the levels.

Key Point #3: Long-term Compliance
Up to 15 Years for Individual Compliance and 20 Years for Community System Compliance



Collaboration



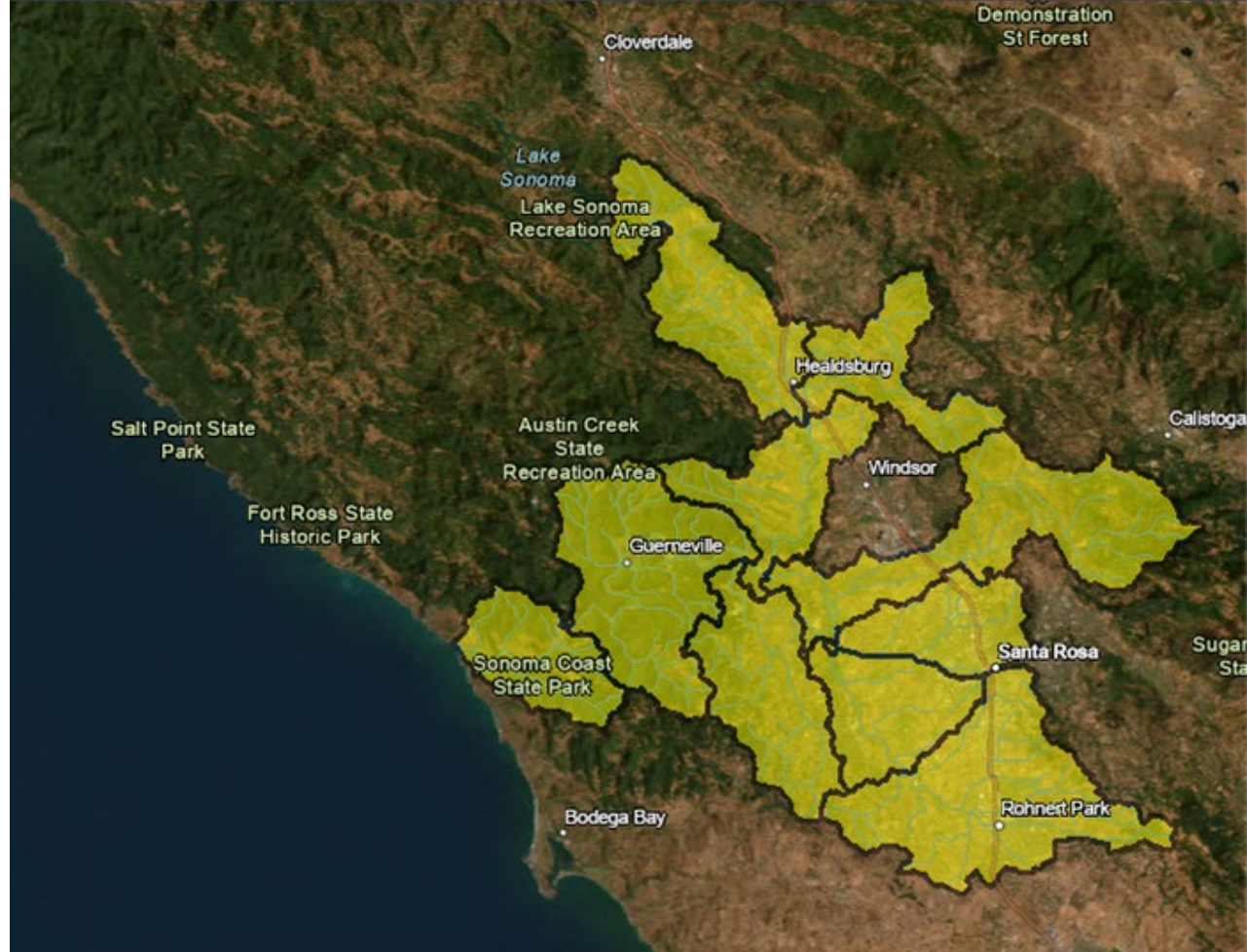
Lower Russian River
Wastewater CAG



Clean. Reliable. Essential. Every Day.

Collaboration

- Interagency Team
- Funding
- Interim Septic Regulations



Collaboration

Key Point #4: Monte Rio / Villa Grande Pilot Agencies and the CAG are working towards wastewater solutions with an initial focus on Monte Rio and Villa Grande.

Key Point #5: Dedicated Funding
A state grant is funding a feasibility study for Monte Rio/Villa Grande wastewater solutions.

Sonoma Water board approves study of lower Russian River wastewater options



Stock photo

June 13, 2022



Listen to this article now

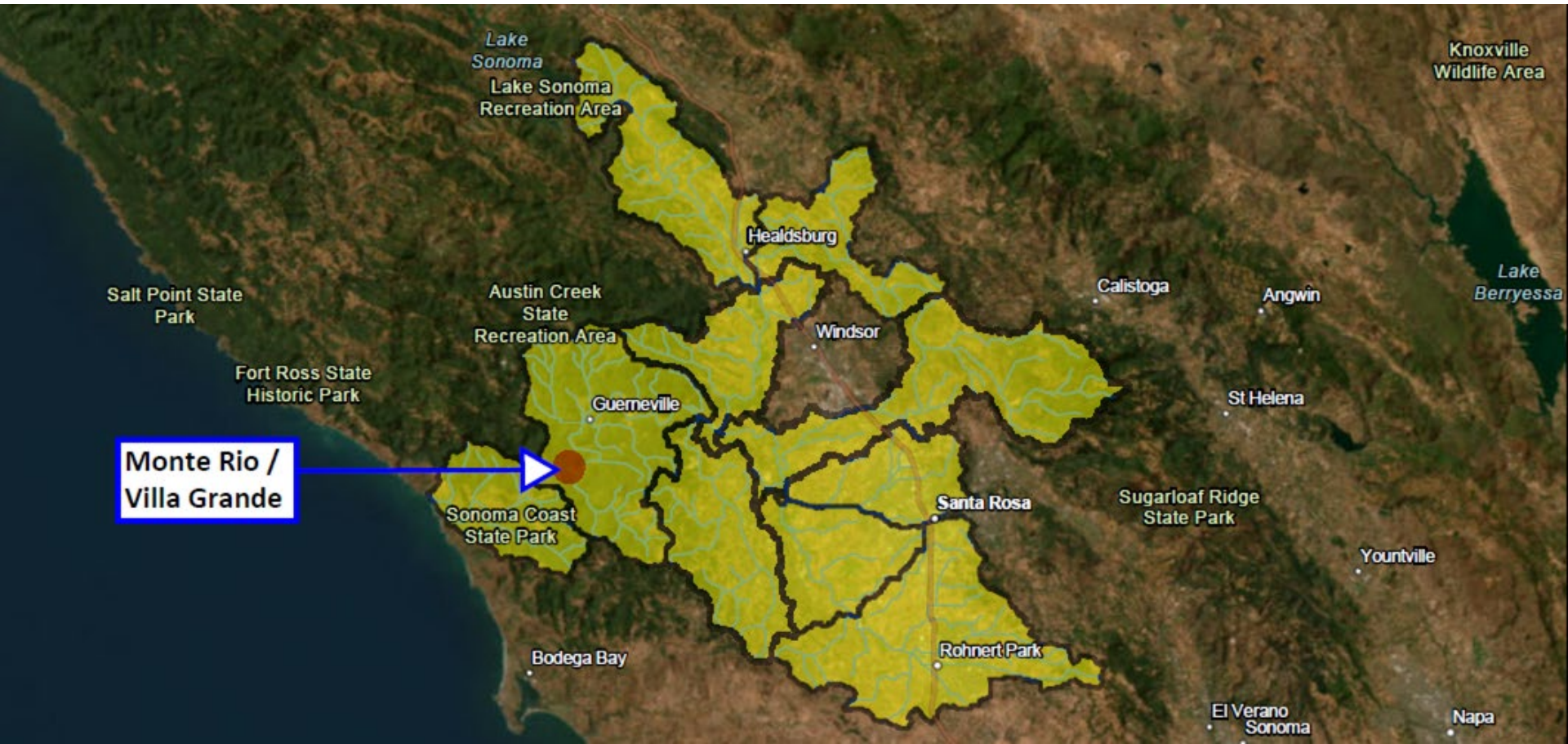
00:00

03:49

The Sonoma County Water Agency (Sonoma Water) Board of Directors voted this week to move forward with a study of options to treat wastewater in the lower Russian River communities of Monte Rio and Villa Grande.

"This study will build the foundation for community-specific solutions to protect public health and improve water quality in the Russian River," said Sonoma County Supervisor Lynda Hopkins, who also is a Sonoma Water director. "The Lower Russian River Wastewater Citizens Advisory Group will be actively engaged in working with the study team, so we can be sure that the solutions reflect local concerns, including affordability."

Wastewater Solutions Pilot Project



Wastewater Solutions Pilot Project

Key Features:

- Feasibility Study Assessment focused on Monte Rio / Villa Grande
- Design and Environmental Quality
- Construction



Wastewater Solutions Pilot Project

Key Point #6: Long Term Implementation

The pilot project will likely take a couple of decades to complete.

Key Point #7: Early Phases of Implementation

Pilot project is near the beginning and alternatives are now starting to be considered.

Key Point #8: Best Practices

Pilot Project following best practices: Common understanding of the issues and solutions, collaboration, leadership, thorough planning, and strong community involvement and support for solutions.

Summary

**Key Point #1
Consistent Community Efforts**

**Key Point #3:
Long Term Implementation**

**Key Point #5:
Dedicated Funding**

**Key Point #7:
Early Phases of Implementation**

**Key Point #2:
River Health**

**Key Point #4:
Community/Agencies Collaboration**

**Key Point #6:
Long Term Implementation**

**Key Point #8:
Best Practices**

RUSSIAN RIVER

Monte Rio and Villa Grande Wastewater Solutions Pilot Project

PHASE 1

SUBMIT PLANNING APPLICATION:

2018–2021

- Community Meeting
- Receive Funding
- Define Scope
- Issue Request for Qualifications

PHASE 2

ENGAGE CONSULTANT:

2021–2023

- Assessment
- Possible Solutions
- Financial Options
- Community Meeting

PHASE 3

SELECT PREFERRED OPTIONS:

2023–2026

- Refine Solutions
- Community Meeting
- Define and Select Management Options
- Complete 10% Design

PHASE 4

LAUNCH MANAGEMENT SOLUTION:

2026–2029

- Community Meeting
- Apply for and Secure Funding
- Complete Design
- Solicit Bids and Select Contractor(s)

PHASE 5

BEGIN IMPLEMENTATION PROJECT(S):

2029–2043

- Continue to Engage Residents
- Implement Solutions
- Monitor Results
- Sustain Efforts

2018



2019

2020

2021



2022

2023



2024

2025

2026



2027

2028

2029



...

2040

Polling: Project Awareness

Polling Question 3a: On a scale of 1-5, to what extent were you aware of the pilot project?

Polling Question 3b: On a scale of 1-5, to what extent were you aware of the state regulations?



Polling: Project Awareness

Polling Question 4: Will the property you own need to comply with the potential new state regulations?



Brelje & Race Consulting Engineers

Dave Coleman, Senior Principal
Sophia Grubb, Project Engineer

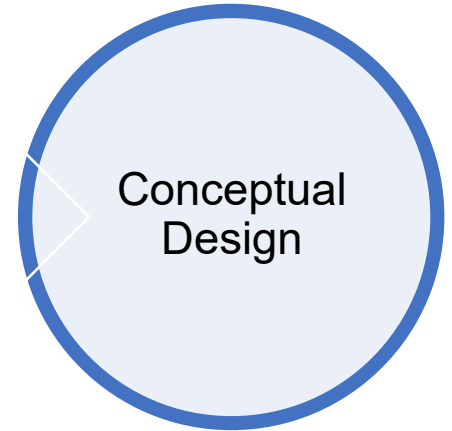
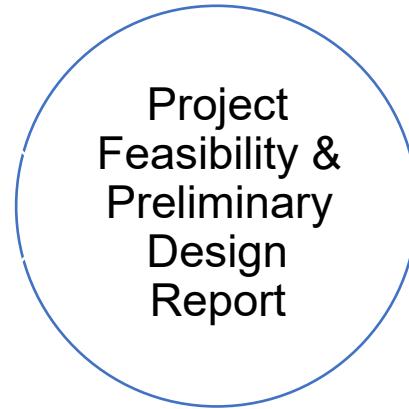


General Overview of Feasibility Study

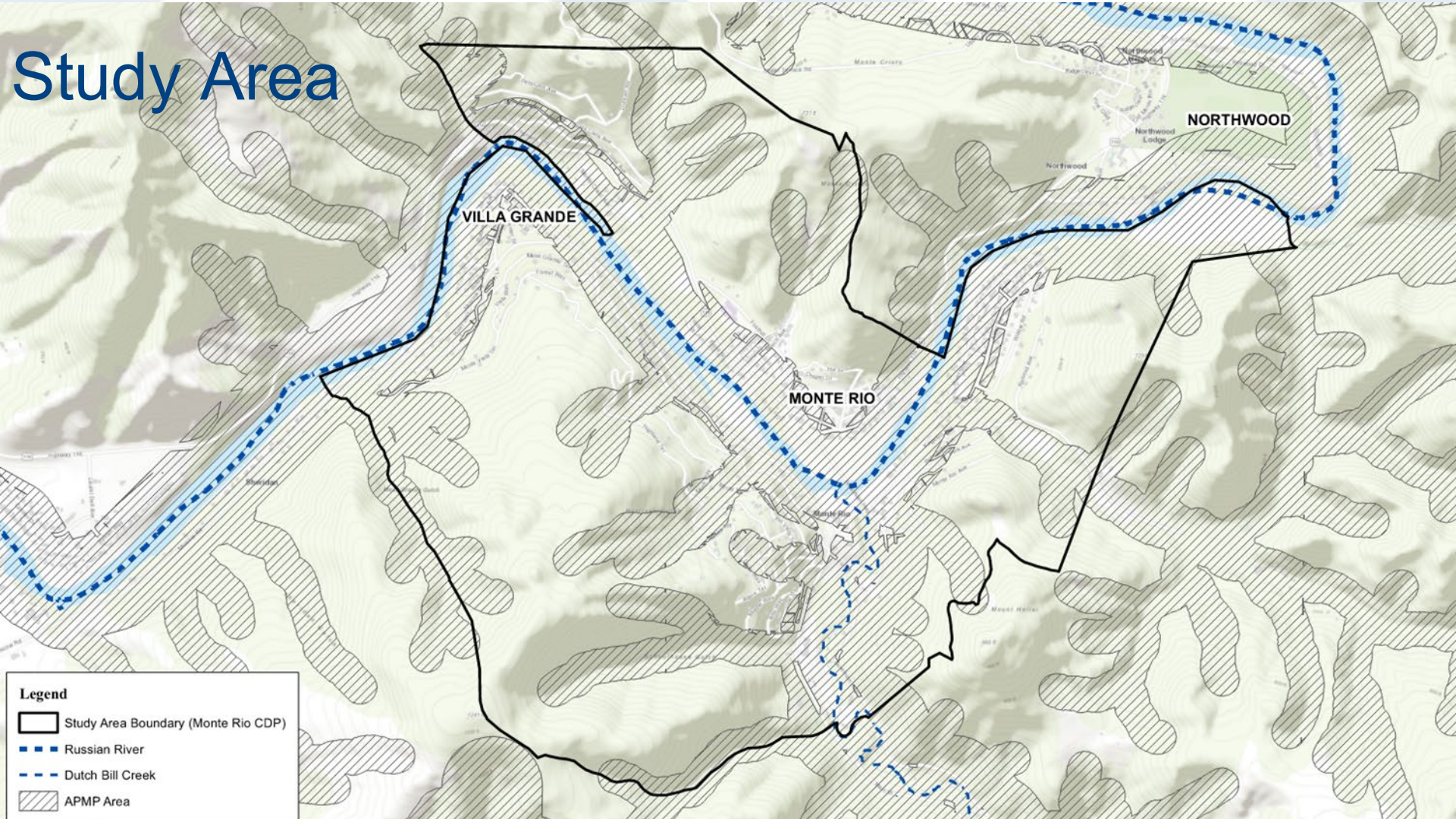
Funding for this project has been provided in full or in part through an agreement with the State Water Resources Control Board. California's Clean Water State Revolving Fund is capitalized through a variety of funding sources, including grants from the United States Environmental Protection Agency and state bond proceeds. The contents of this document do not necessarily reflect the views and policies of the foregoing, nor does mention of trade names or commercial products constitute endorsement or recommendation for use.



Scope of Work



Study Area



Legend

- Study Area Boundary (Monte Rio CDP)
- Russian River
- Dutch Bill Creek
- APMP Area

Study Area Analysis Purpose & Scope

Analyzing
Demographics

Evaluating Study
Area Site
Characteristics &
Existing Facilities

Developing
Planning Criteria

Introducing
Alternatives

Demographics of the Study Area

Single Family Residential



Multifamily Residential



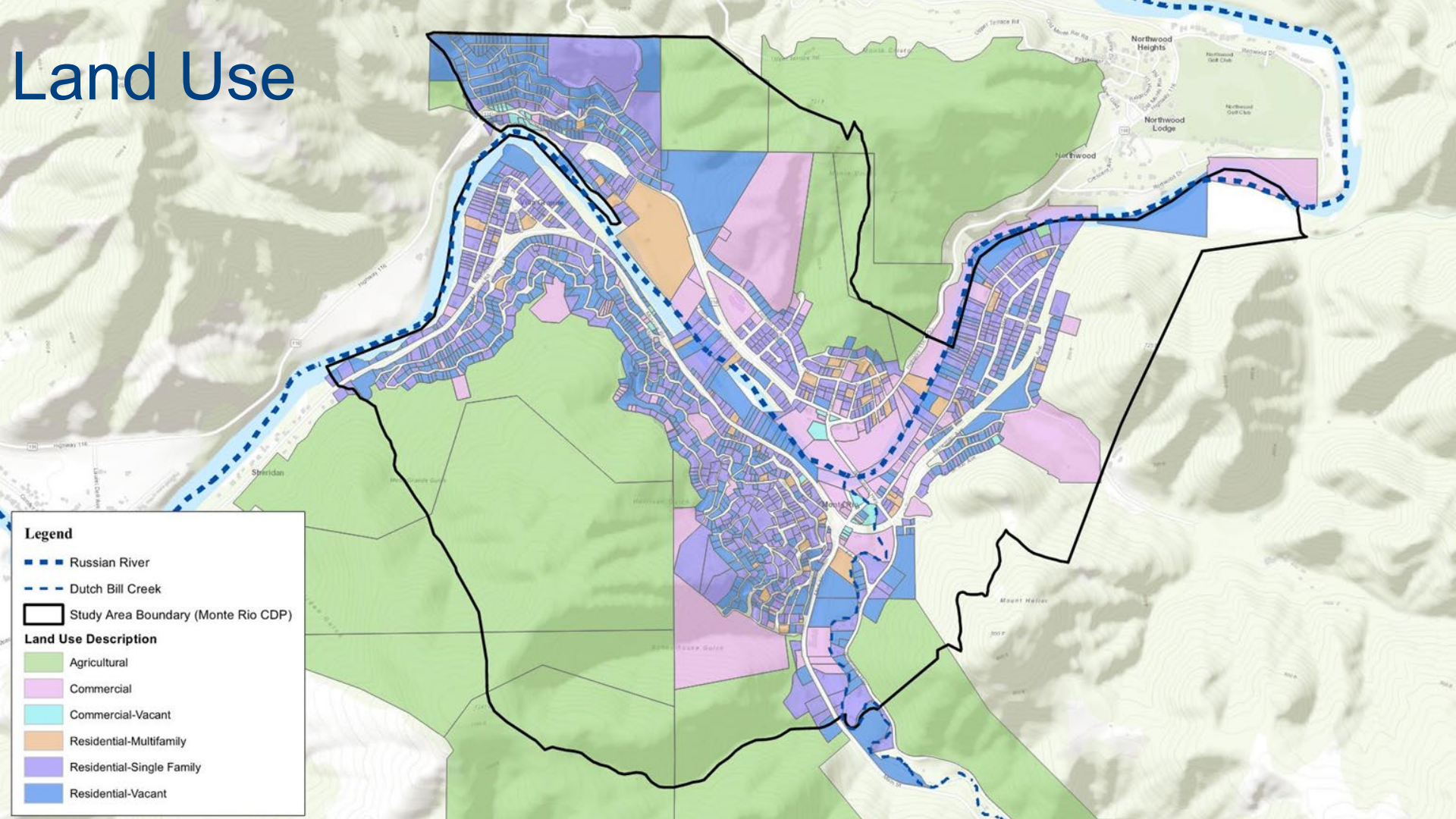
Commercial



Agricultural



Land Use



Legend

- Russian River
- Dutch Bill Creek
- ▭ Study Area Boundary (Monte Rio CDP)

Land Use Description

- Agricultural
- Commercial
- Commercial-Vacant
- Residential-Multifamily
- Residential-Single Family
- Residential-Vacant

Study Area Characterization



Parcel Size



Topography



Soil Type



Flood Zone



Vegetation



Public Road Network

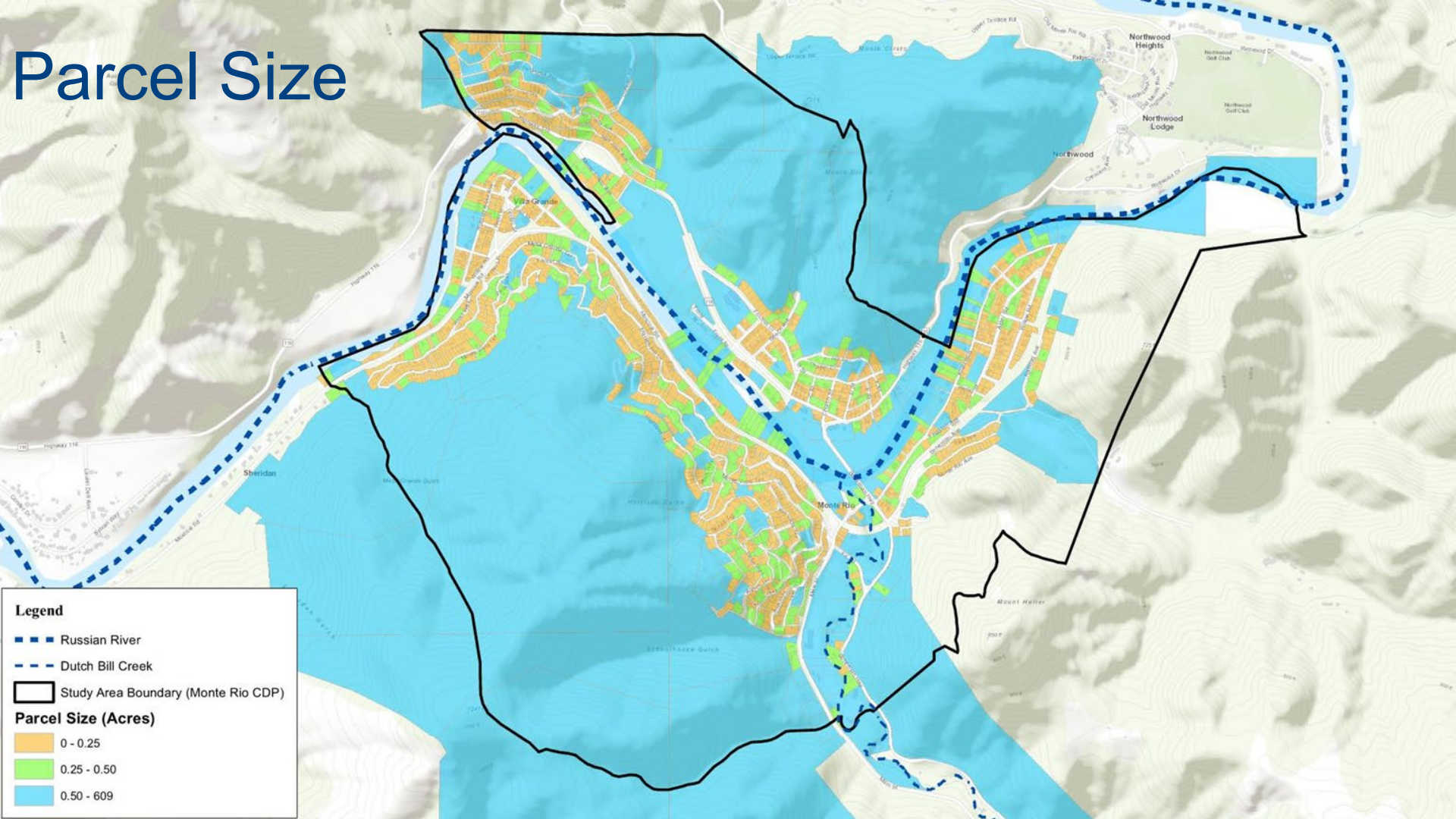


Age of Existing Facilities

Parcel Size



Parcel Size



Topography & Soil Type





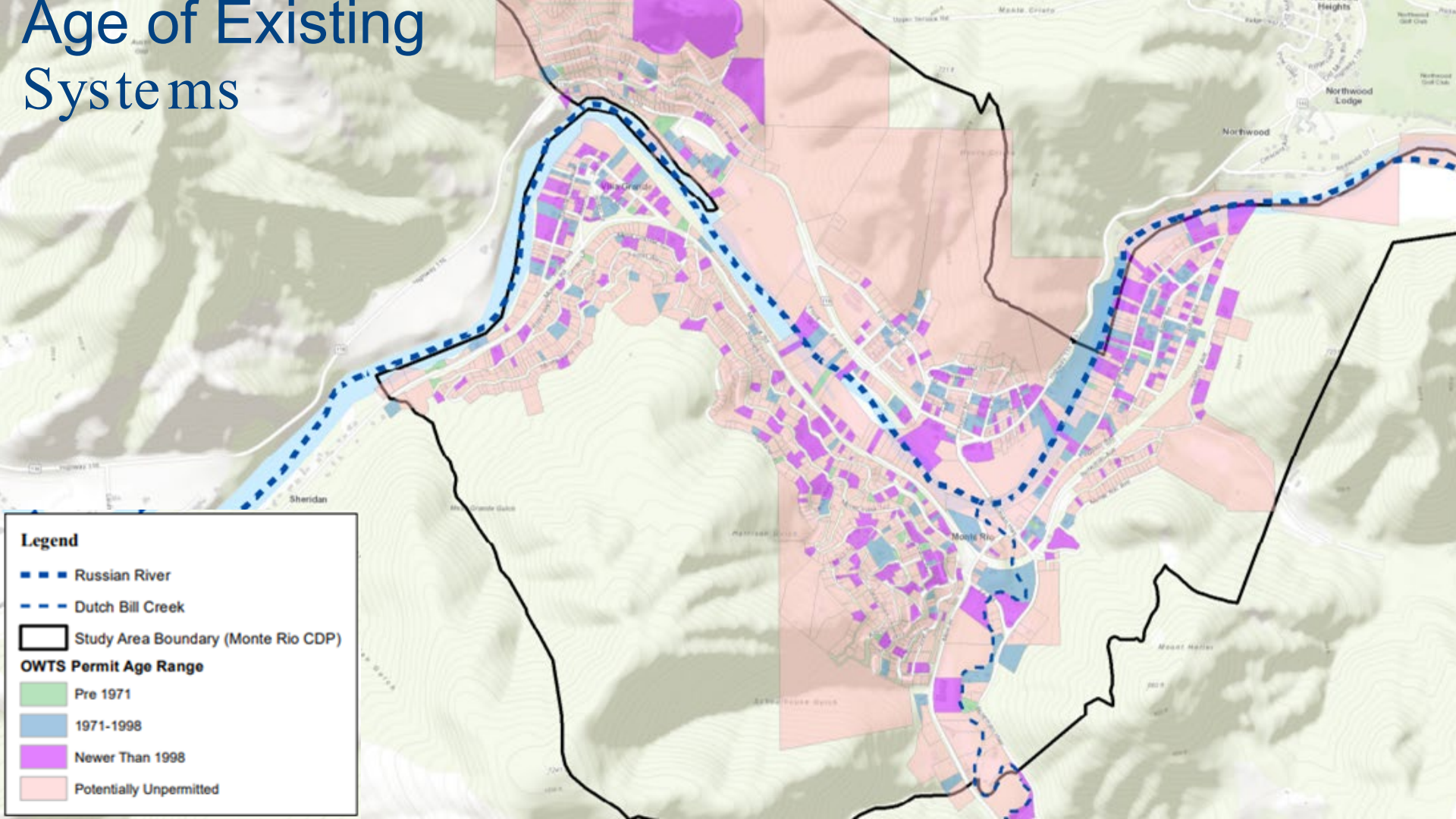
Flood Zone



Vegetation & Public Road Network



Age of Existing Systems



Polling: Your Wastewater System

Polling Question 5: For those of you in the study area, what type of wastewater system do you have on your property?

Polling Question 6: For those in the study area, does your system operate properly (not surfacing, not backing up in home)?

Polling Question 7: Do you know of any systems in your neighborhood that are experiencing issues or are failing?



Polling: Your Wastewater System

Polling Question 8: What type of maintenance are you doing on your system? (Select all that apply)

Polling Question 9: How often are you maintaining your system?

Potential Solution Alternatives

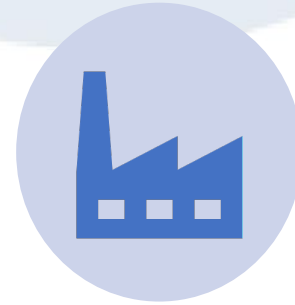
Potential Solution Alternatives



On-Site
Wastewater
Treatment
Systems



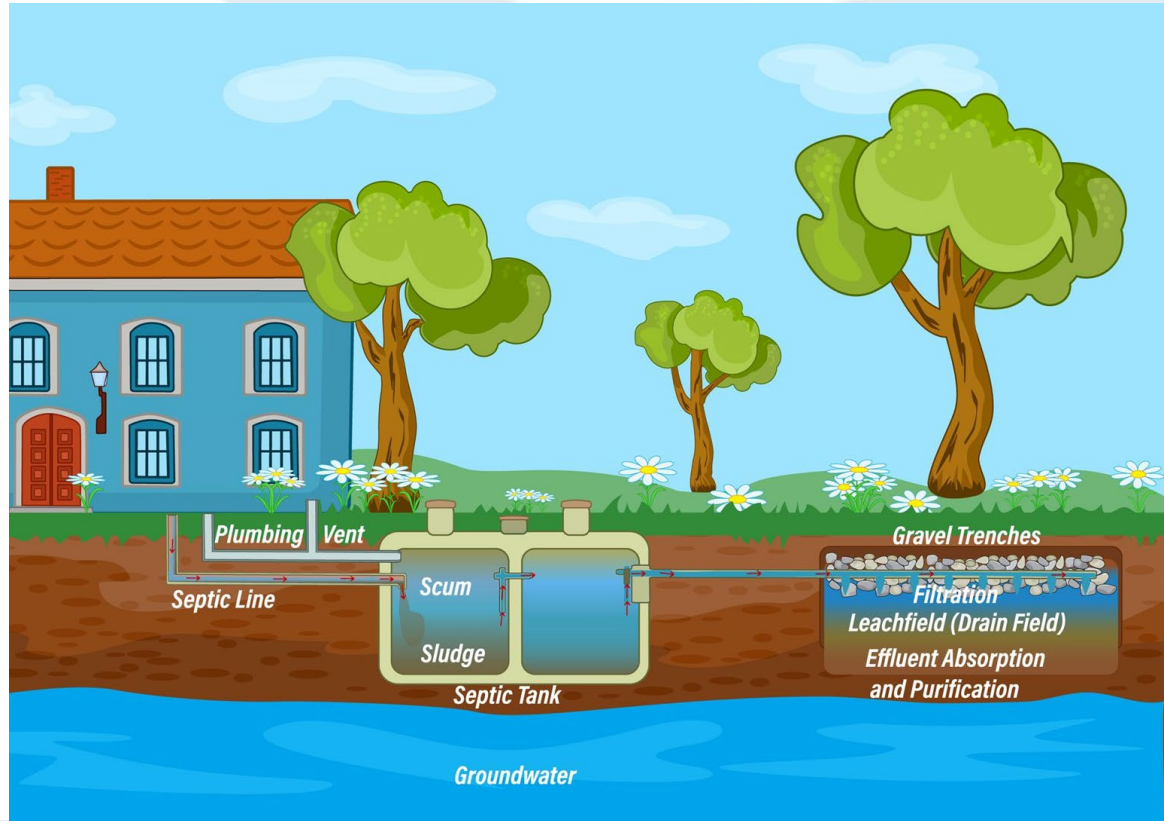
Community
Wastewater
Treatment
Systems



Connection to
Regional
Wastewater
Treatment Plant

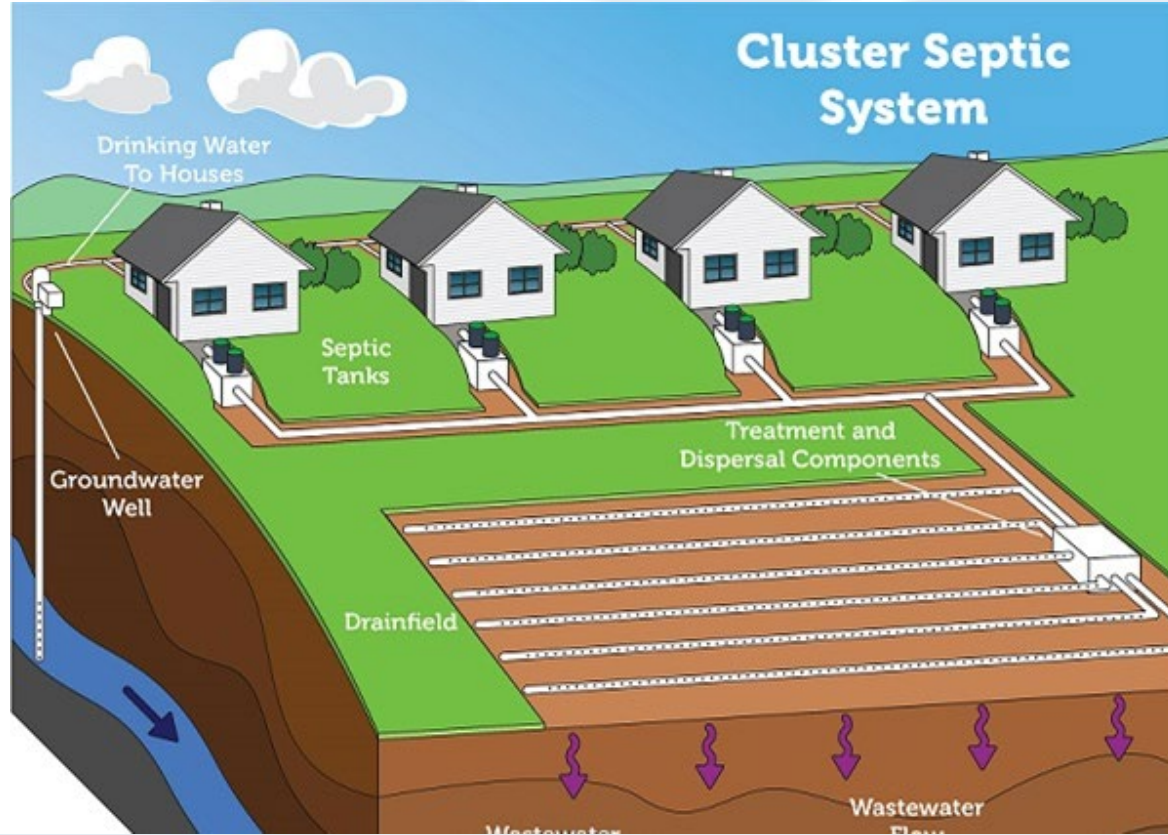
On-Site Wastewater Treatment Systems

- Repair or Replace systems for each individual residence or business
- May include implementation of solutions such as waterless toilets



Community Wastewater Treatment Systems

- Individual septic tanks for each home
- Pump septic tank effluent to a community leach field



Connection to Regional Wastewater Treatment Plant

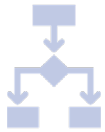
- Construction of a centralized collection system
- Convey wastewater to an existing wastewater treatment plant



Next Steps

Of the Feasibility Study

Alternatives Development & Analysis



Alternatives Refinement

- Determine which alternatives to analyze



Regulatory Considerations

- Determine regulatory considerations



Life Cycle Costs

- Construction Costs
- Operation & Maintenance Costs



Property Owner Financial Impact

- Up-front Fees and User Rates



Governance

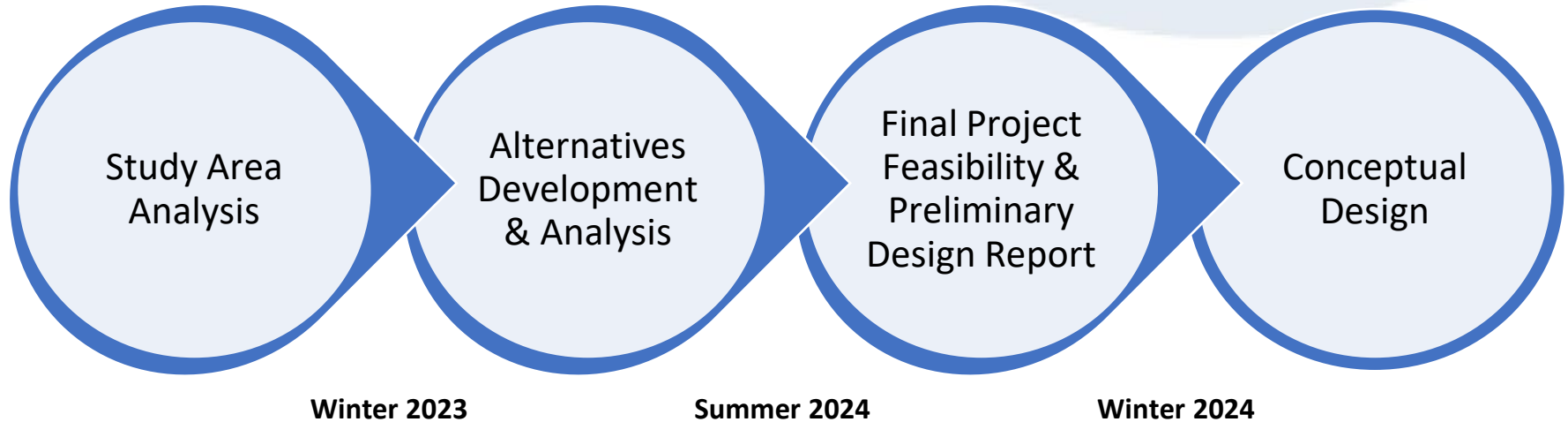
- Provide governance options for each alternative



Summary and Preferred Project

- Recommend a preferred project based on analysis

Anticipated Feasibility Study Timeline



Polling: Concerns and Solutions

Polling Question 10: How concerned are you about the following elements: cost, governance, impact to the environment, ability of my system to meet regulations?

Polling Question 11: Based on what you have learned today, what emerging solution is currently most appealing to you? (Ranking)

Polling: Concerns and Solutions

Polling Question 12a: On a scale of 1-5, how open to installing a waterless toilet in your home?

Polling Question 12b: On a scale of 1-5, how open are you to connecting to a centralized sewer system when cost is not considered?



Resource Panel

Q & A Session



Recap and Review

Emerging Questions, Action Items



What's Next

Michael Makdisi
Ombudsman & Analyst



Assistance: *How can I help?*

Resource & Support

- Provide information & explanation
- Discuss your situation & work through challenges
- Help identify financial assistance & next steps
- Community & agency support

What's on the horizon?

- Individual and community wastewater solutions
- Feasibility study (community meeting: mid2024)
- New & revised regulations (2024)



Involvement: *What can you do?*

- Maintain your system
- Gather information
- Seek assistance
- Consider & discuss alternatives
- Attend the next community meeting
- Provide feedback
- Participate in a CAG meeting



Polling: Resources and Assistance

Polling Question 15: What types of resources would be most helpful?

Polling Question 16: What information are you most interested in learning about?

For more information...

- Sign-in sheet
- Handouts
- Websites
- Property documentation
- Direct Contact





How to reach me?

- **Call:** (707) 565-3747
- **Email:** Michael.Makdisi@SonomaCounty.org
- **Schedule an appointment**
- **Office Hours**
 - Monte Rio Community Center
 - 2-6 pm on Dec. 18, Jan. 9 & 23, Feb. 13 & 27



Thank You

EXTRA SLIDES



Monte Rio/Villa Grande Wastewater Solutions



*Russian River
at Villa Grande, Calif.
near Monte Rio*

