



→ **Springs Municipal Advisory
Council Meeting**
February 8, 2023

Arnold Drive Bike Lane Project



Introduction



County of Sonoma Department of Transportation & Public Works

Cindy Rader, PE - Senior Civil Engineer/Project Manager

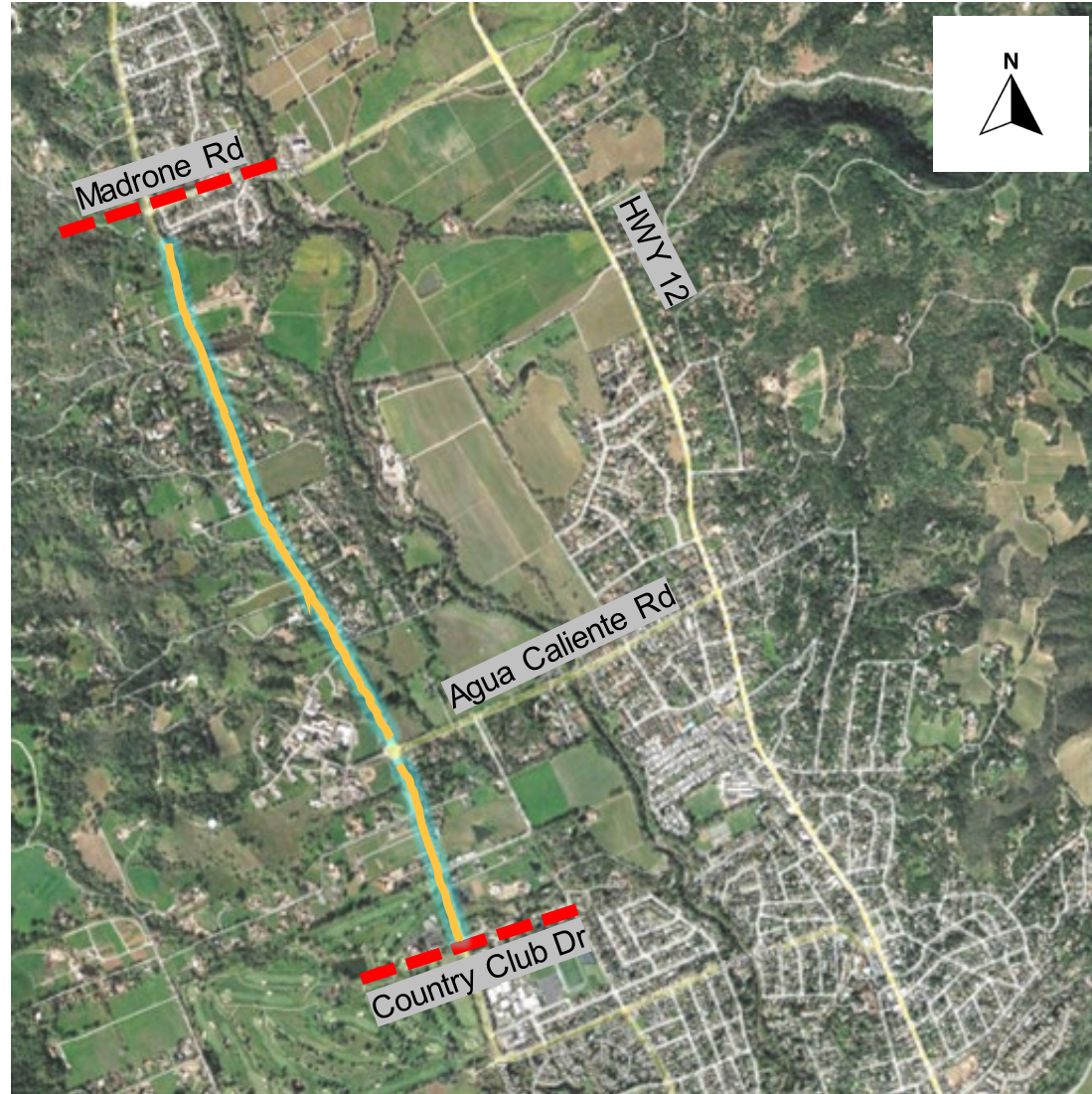


GHD, Inc – Consulting Engineers

Jeremy Schmal, PE – Consultant Project Manager

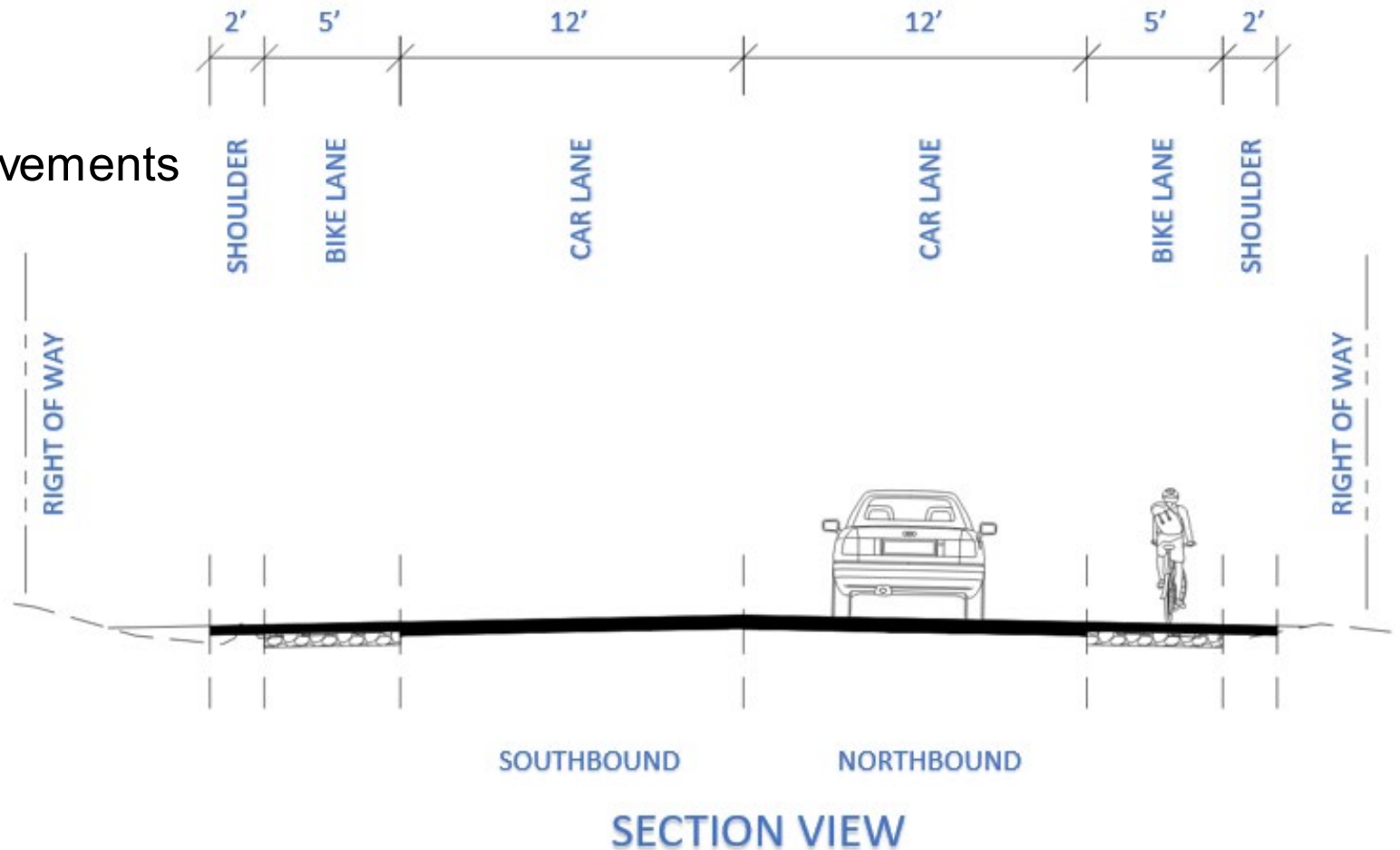
Project Overview

- 2-mile-long corridor between Country Club Dr & Madrone Rd



Design

- Project preserves 12' vehicular lanes and adds 5' bike lanes and 2' shoulders and 3' buffer to fixed objects.
- Some improvements include:
 - Road widening
 - Culvert extensions
 - Roadside storm drainage improvements
 - Signage /striping



Next Steps

➤ Public Engagement and Outreach

- Community Meeting – March 2023 via zoom

➤ Arnold Drive Bike Lane Project Website

- Coming soon on Sonoma Public Infrastructure “Projects in Planning” website. Check back at: <https://tinyurl.com/4ckpmdx6>

The screenshot shows the website for Sonoma Public Infrastructure (formerly TPW). The header includes the county name and navigation links. The main content area is titled 'Projects in Planning' and features a search bar and a list of projects. A sidebar on the left contains a navigation menu with categories like 'About Us', 'Divisions', 'Road Projects', and 'Projects in Planning'. The 'Projects in Planning' section includes a message about website updates and a list of projects: Chalk Hill Road Bridge Replacement, Franz Creek Bridge Replacement, Freestone Flat Road Bridge Replacement (C11004), and Geyserville Drainage Project Development (E20004). Each project entry includes a brief description and a small image.

COUNTY OF SONOMA | I Want To | Departments & Agencies | News | Events | Employment

Sonoma Public Infrastructure (formerly TPW) | Search ... | Sonoma Public Infrastructure (formerly TPW) | All of Sonomacounty.ca.gov

COUNTY OF SONOMA | DEVELOPMENT SERVICES | SONOMA PUBLIC INFRASTRUCTURE (FORMERLY TPW) | ROAD PROJECTS | PROJECTS IN PLANNING | Share this

Sonoma Public Infrastructure (formerly TPW)

- About Us +
- Divisions +
- Underground Utilities Projects
- Road Projects -
- Current Road Work and Closures
- Projects in Planning**
- Current Projects
- Boards, Commissions and Committees
- News +
- Calendar
- Accessibility Assistance
- Back to ROAD PROJECTS

Projects in Planning

Transportation and Public Works is now Sonoma Public Infrastructure - Website updates coming soon!

Projects planned for the future by Sonoma County Department of Transportation & Public Works.

Chalk Hill Road Bridge Replacement

The existing bridge that carries Chalk Hill Road over Maacama Creek is a one-lane structure built in 1915. It is a County landmark and is eligible for inclusion on the National Register of Historic Places. The existing bridge has deteriorated significantly and is vulnerable to earthquakes as well as foundation scour and erosion along the south creekbank. The bridge has been determined to be unstable in an earthquake, and is threatened by erosion. The County seeks to replace the bridge with a new two-lane bridge.

Franz Creek Bridge Replacement

Sonoma County is currently working towards replacing the single-lane bridge over Franz Creek, on Franz Valley School Road. The bridge requires replacement due to scour deficiencies. Age and erosion from the stream are threatening the structural integrity of the existing bridge.

Freestone Flat Road Bridge Replacement (C11004)

The Sonoma County Department of Transportation and Public Works (DTPW) proposes to replace the existing Freestone Flat Road Bridge, which is a two-span, steel-girder truss bridge over Salmon Creek, in the southwest portion of the County.

Geyserville Drainage Project Development (E20004)

This project will gather information on the existing drainage system for the unincorporated town of Geyserville to identify problems leading to flooding issues. It will identify solutions to develop a list of projects to repair and improve drainage infrastructure in the town and its surrounding area.