



Community Wildfire Protection Plan Community Stakeholders Meeting



Why Create a “CWPP?”

- Some reasons for developing a Community Wildfire Protection Plan:
 - Establish collaborative relationships with governmental and community stakeholders BEFORE an event occurs
 - Outline a plan to work toward reducing wildfire risk
 - It can serve as a new organization's initial strategic plan moving forward.
 - The work product can be used for funding requests



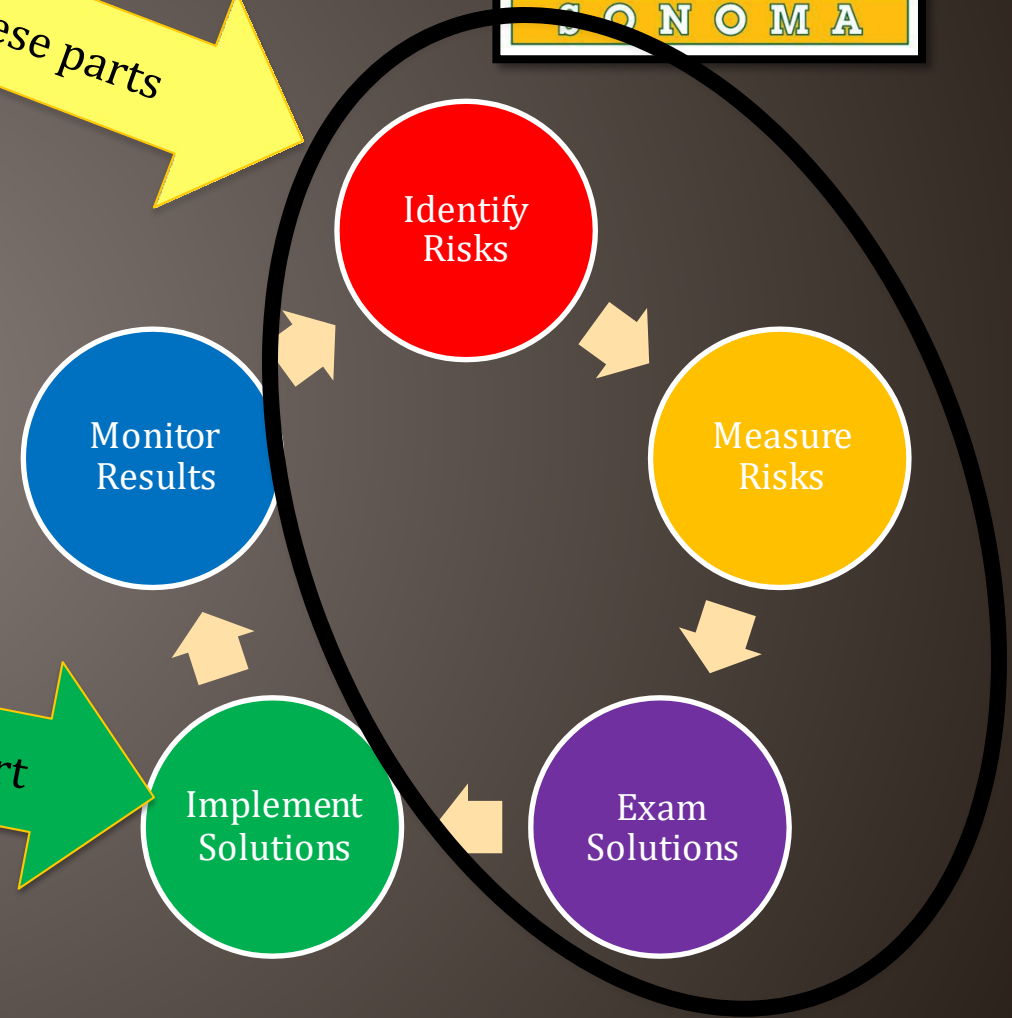
It is just a Risk Assessment

We are assisting with these parts

• They all essentially follow the same basic methodology

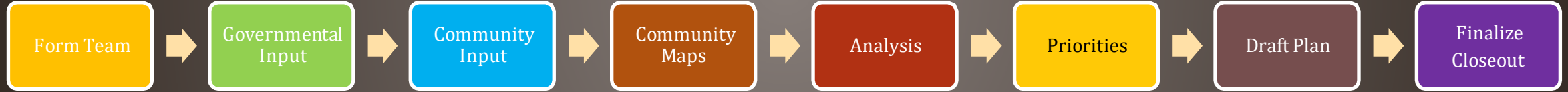
- Gather data
- Evaluate the data
- Examine possible mitigations
- Implement the
- See what happens

FSS can help with this part





The Process



2022



Typical Drivers



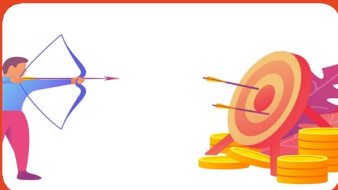
Preparedness and Evacuation



Education and Outreach



Reduce Structural Ignitability

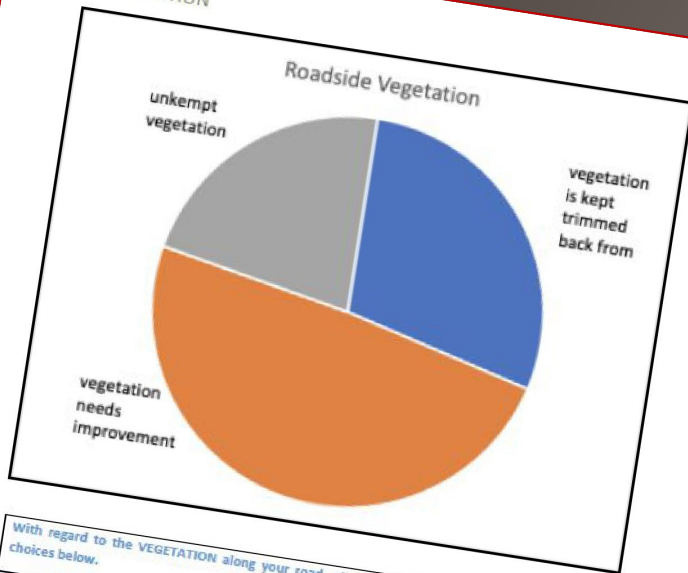


Prioritized Fuel Reduction

Data Analysis



FUELS REDUCTION



With regard to the VEGETATION along your road, please select the best description from the choices below.

Description	Percentage
Grasses are mown to less than 4 inches, trees and brush are trimmed to provide 10' of horizontal clearance, and 15' of vertical clearance	29%
Roadside vegetation is mostly well maintained, but some areas need improvement	49%
Tall grass, brush and trees border and overhang the roadway	22%

Note: The County has recently done some road maintenance work on our evacuation corridors

There are still nearly a quarter of our Neighborhoods with dangerous brush and overhanging trees

te Main CWPP Website Fire Safe Councils and Community Organiza

Story Maps and Web Maps

PP Update. These are provided to review the data we have gathered and offer feedback regarding that data.

o learn more. Each contains instructions on how to navigate or use the features

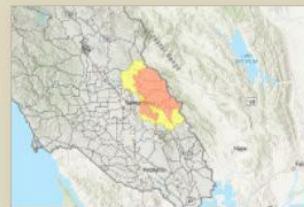


Sonoma County Wildfire Hazard Index



Sonoma County Wildfire Risk Index

Part of the Sonoma County Community Wildfire Protection Plan (CWPP) Update



IGNITION RISK AND HAZARD ASSESSMENT OVERVIEW FOR GREATER OCCIDENTAL

FACTORS	RATING
IGNITION RISK ASSESSMENT	
CONTRIBUTING RISK FACTORS	
History of Lightning	No
Camping Activities	Moderate
High Level of visitors/activities	Moderate
Understorey receptive to ignition	High
Thick brush and trees	High
Unmaintained Powerline Corridors	High
High fuel loads	High
High Winds	Moderate
History of fire ignitions	Moderate
Add other risk factor	Choose
Add other risk factor	Choose
Add other risk factor	Choose

FACTORS	RATING
HAZARD ASSESSMENT	
ACCESS	
Ingress/Egress	Moderate 3
Width of Primary Road	Moderate 3
Passability	Moderate 3
Secondary Road Terminus	Inadequate 5
Primary Slope	Moderate 3
Street Signs	Adequate 1
Address Signage	Inadequate 5
Roadside Vegetation	Moderate 3
Narrow Secondary	Inadequate 5
Secondary Paved	Adequate 1
Secondary Road Slope	Moderate 3
Unrated Bridges	3
Wooden Bridges	Moderate 3
Gates	Adequate 1
BUILT ENVIRONMENT	
2007 Standards	Inadequate 5
Roofing Materials	Moderate 5
Siding Materials	Inadequate 3
Unenclosed Features	Inadequate 5
UTILITIES	
Utility Ignition Risk	Moderate 3
Lot Size	Moderate 3
Defensible Space	Inadequate 5
FIRE PROTECTION	
Water Source	Moderate 5
Fire Protection	Moderate 7
FIRE BEHAVIOR	
Fire Hazard Safety Zone	Moderate 3
Slope	Slight 4
Aspect	Very High 7
Fuels	Extreme 5
Fire Behavior	Extreme 10

Final Scores

Summary Rating¹ VERY HIGH

Summary Rating / Score 102

Hazard Category	Score
Low Hazard	< 41
Moderate Hazard	41-60
High Hazard	61-75
Very High Hazard	76+

¹ Summary rating for Ignition Risk Assessment is a judgment call determined by planning committee.



Establish Priorities

A) PROJECT: EARLY WARNING COMMUNICATION PROTOCOLS

Priority: High

Category/s: Emergency Notification and Communication

Goal: Ensure earliest possible and most complete alert/warning system

- Continue to work with Sonoma County on harmonizing communication
- Conduct and coordinate ongoing testing of the communication system
- Identify and eliminate dead zones in the electronic emergency notification system
- Develop and communicate community and neighborhood warning plans during emergencies.
- Include investigating and/or distributing: phone trees, car horn call systems, NOAA Radios, other technologies.
- Develop informal neighbor notifying neighbor recommendation system

Participants: Sonoma County Department of Emergency Management

Timing: Immediate and ongoing

Potential Cooperating Agencies and/or Programs: Sonoma County 5
Sonoma County Department of Emergency Management, Sonoma Co

Potential Funding Sources: Individual neighborhoods, Sonoma County funds, matching grants





Finalize the Plan

SECTION IV: REQUIRED SIGNATORS

GOVERNMENT

The following entities attest that the standards listed above are proposed to be met and mutually accept the content of this Community Wildfire Protection Plan:

Lynda H 11/24/20
district5@sonoma-county.org (Nov 24, 2020 14:31 PST)

LOCAL GOVERNMENT **Date**

Sonoma County Supervisor, 5th District

Lynda Hopkins, County Supervisor

Ron Lunardi 11/24/20
Ron Lunardi (Nov 24, 2020 14:35 PST)

LOCAL FIRE **Date**

Occidental Fire Department

Ron Lunardi, Fire Chief

Shana Jones 11/24/20
Shana Jones (Nov 24, 2020 15:58 PST)

STATE AGENCY **Date**

California Department of Forestry and Fire Protection (CAL FIRE)

Shana Jones, Unit Chief/CAL FIRE

ROBERTA MACINTYRE 11/24/20

COUNTY FIRE SAFE COUNCIL **Date**

Fire Safe Sonoma

Roberta MacIntyre, President/CEO



Summary

- **Step One:** Convene Decision Makers
- **Step Two:** Involve Community Stakeholders
- **Step Three:** Involve Governmental Stakeholders
- **Step Four:** Formalize a Community Base Map
- **Step Five:** Conduct a Community Risk Assessment
- **Step Six:** Establish Community Priorities and Recommendations
- **Step Seven:** Develop Draft(s)
- **Step Eight:** Finalize Community Wildfire Protection Plan

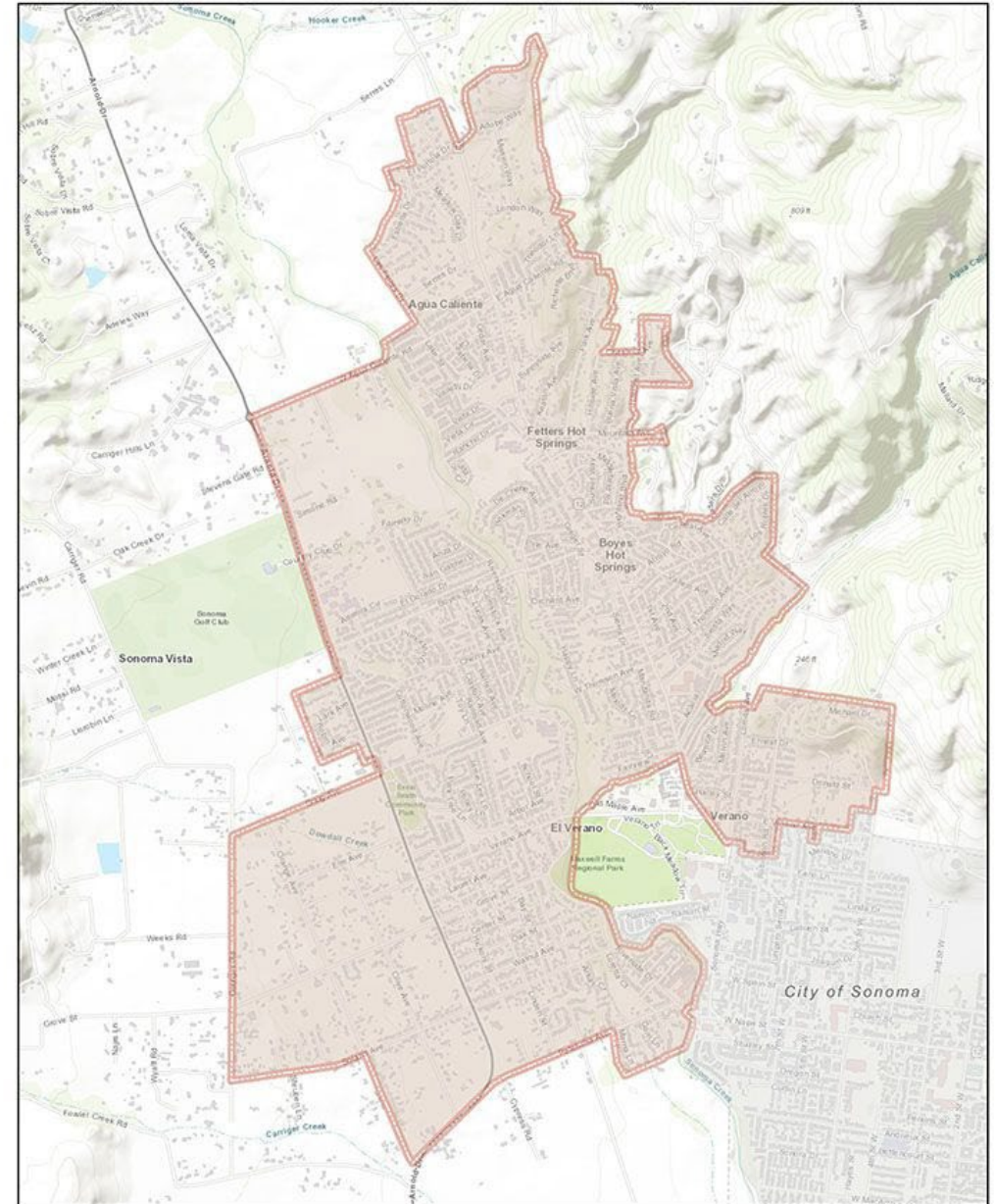


References

- ***Preparing a Community Wildfire Protection Plan, A Handbook for Wildland-Urban Interface Communities;*** Sponsored By: Communities Committee, National Association of Counties, National Association of State Foresters Society of American Foresters, Western Governors' Association; March 2004
- ***Community Guide to Preparing and Implementing a Community Wildfire Protection Plan,*** a supplemental resource guide to *Preparing a Community Wildfire Protection Plan: A Handbook for Wildland-Urban Interface Communities;* March 2004
- ***A Fire Service Leader's Guide to Preparing a Community Wildfire Protection Plan;*** International Fire Chief's Association; Date Unknown
- ***Community Wildfire Protection Plan, Leader's Guide Supplement;*** International Fire Chief's Association, National Association of State Foresters, The Wilderness Society; Date Unknown

Local Context

- Springs FSC began as an ad hoc of the Springs MAC
- Springs FSC covers same geographic area as MAC
- Springs FSC is unique in the size and complexity of area covered
 - Most FSCs cover a few hundred homes
 - We are pretty much a small city (almost 20k people)
 - Goal to have FireWise communities throughout the area



The Springs Municipal Advisory Council (MAC)
Supervisory District 1



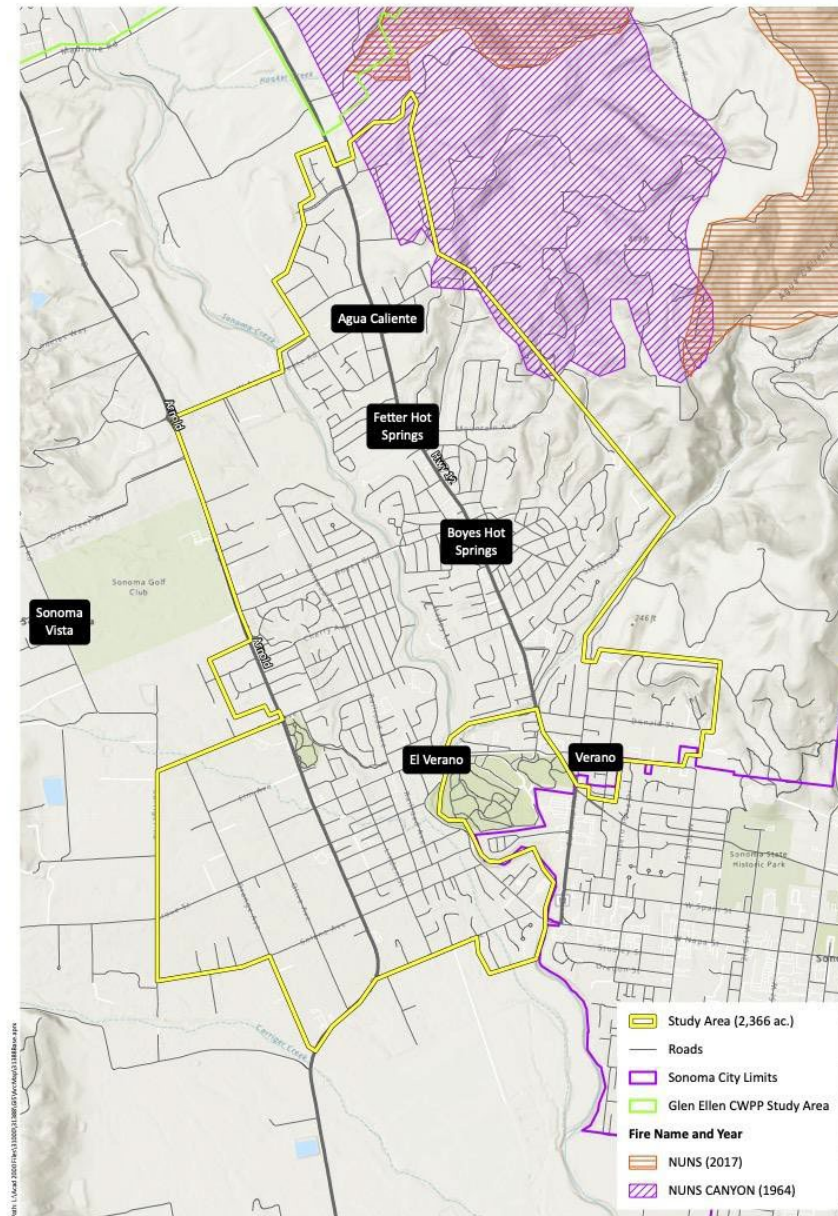


Findings

- Less than 30% of properties have adequate defensible space; roadside vegetation is also a concern
- Roads are narrow - 53.5% of survey respondents indicate a motorhome and fire engine would have difficulty passing on their street
- Fire has ALMOST come into the Valley 3 times via the Mayacamas Hills

Fire History

- Pink is 1964 Nuns Fire
- Red is 2017 Nuns Fire
- Not shown is a fire from 1923 which had similar path



Sources: ESRI Topo, Sonoma County PRWD, WRA | Prepared By: rjander, 10/7/2022

Figure 7. Fire History



Projects

Big Priority Project: Shaded Fuel Breaks Along the Mayacamas

- Need to apply for CEQA funding 1st to do CEQA analysis
 - CEQA is a law that requires analysis of environmental impact
- Then apply for funding to complete the shaded fuel breaks

Other projects:

- Roadside fuel management & Chipper Program - we have \$ for this now!
- Defensible space education
- Improved addresses
- Evacuation Education - when is it time to go?
- Strengthen the FSC with area FireWise captains



Next Steps

- Public + governmental stakeholders to provide input on draft Springs Community Wildfire Protection Plan
- **Email input to firesafesprings@gmail.com by end of year**
- Spanish translation of CWPP coming soon
- We need to strengthen the Springs Fire Safe Council - Looking for area captains to cover their neighborhoods and become FireWise communities. Please email firesafesprings@gmail.com if interested.