



VALLEY OF THE MOON PARK RIDERS UNION

INTRODUCTION



VOMPRU's Mission:

To provide a strong foundation upon which to build a thriving skateboarding community in Sonoma Valley.

A large crowd of people at a skateboarding event, many holding up their skateboards. The scene is vibrant and filled with people of various ages and backgrounds, all engaged in the activity. The background shows a street scene with trees and buildings, suggesting an outdoor urban setting.

Why is supporting skateboarding important?

- Positive, creative outlet
 - Supportive community
 - Teaches perseverance
- Promote exercise
 - Mental health benefits
 - Alternative to team sports
- Advocate for access to all populations



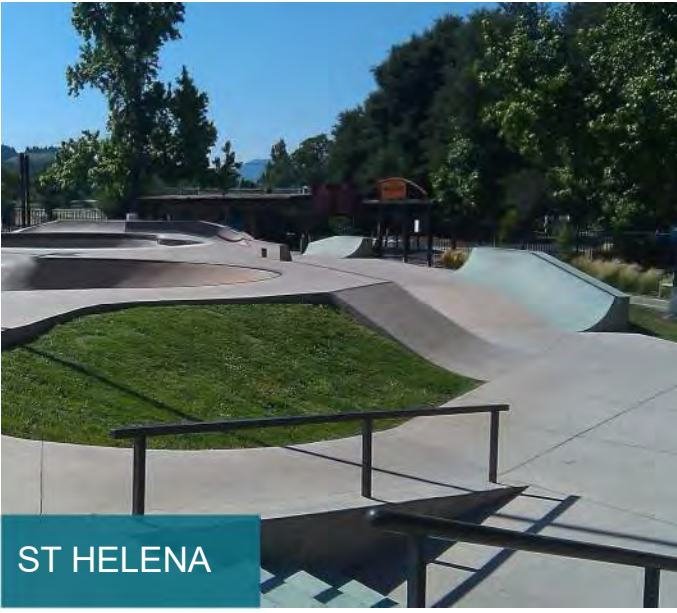
EXISTING SONOMA SKATEPARK DESIGN

- ✓ Concrete work was “initially unusable”
- ✓ Park closed throughout repair process (1 year)
- ✓ Design elements not present in final product:
 - Restroom
 - Drinking fountain
- ✓ Resulted in underutilized facility

OTHER EXISTING NORTH BAY SKATEPARKS



NAPA



ST HELENA



SEBASTAPOL



CURRENT INITIATIVES

- ✓ Community clean up days
- ✓ Minor concrete repair & painting
- ✓ Fence removal
- ✓ Community outreach
- ✓ Youth classes
- ✓ Establishing fundraising partnership
- ✓ Fundraising events



FUTURE INITIATIVES

- ✓ Park expansion & re-design
- ✓ Coordinate design proposal with skatepark builders
- ✓ Advocacy groups
- ✓ Contests & professional demos

PROPOSED SKATE & BIKE ZONE AREA



1"=20'
SCALE
0 20' 40'
FEET
NORTH

Skate & Bike Zone - conceptual area base plan

DRAFT | 08.03. 21

MAXWELL FARMS REGIONAL PARK | SONOMA, CA



OUR PRELIMINARY DESIGN

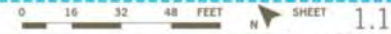
- ✓ Opportunity to improve on initial design
- ✓ More cost effective than full demo and new construction
- ✓ Create a more inclusive, welcoming environment
- ✓ Phased approach to improvements



PARK DESIGN CONCEPT

Create a phased approach to redeveloping skate & bike park zone. Design concept augments existing park and adds a variety of new features.

LEGEND	PHASE
<ul style="list-style-type: none"> 1 New quarter pipes with bridge over park entry. 2 Add missing hips to existing table-top. 3 Resurface and combine existing quarter pipes. 4 Reconfigure existing three bowls to create new pool. 5 New spine to existing southern bowl. 6 Long quarter pipe with varied height along northern edge of park. 	<p>I</p> <p>Update existing park and upper pad area</p>
<ul style="list-style-type: none"> 7 Amphitheatre style seating. 8 New beginner bowl +/- 3' below existing park. 9 Stairs between park areas. 10 Slappy curb around edges. 11 Manual pad. 12 Three block between park areas. 13 Bank between park areas. 	<p>II</p> <p>New park at lower pad area</p>
<ul style="list-style-type: none"> 14 Seating area. 15 Bleachers. 16 Flatground plaza. 17 Drinking Fountain. 18 Entry to bike park. 	<p>FLEX</p> <p>Central gathering and spectator zone</p>





FUNDRAISING GOALS

- ✓ Total target for park expansion: +/- \$250,000
- ✓ 2 phases of development @ +/- \$125,000 per phase
- ✓ Fundraising partner - Parks Foundation (<https://www.maxwellfarms.org/skatepark.html>)
- ✓ Anticipate volunteer labor to reduce costs

THANK YOU!

