

Proposal for a  
**Glen Ellen Community Bikeway**

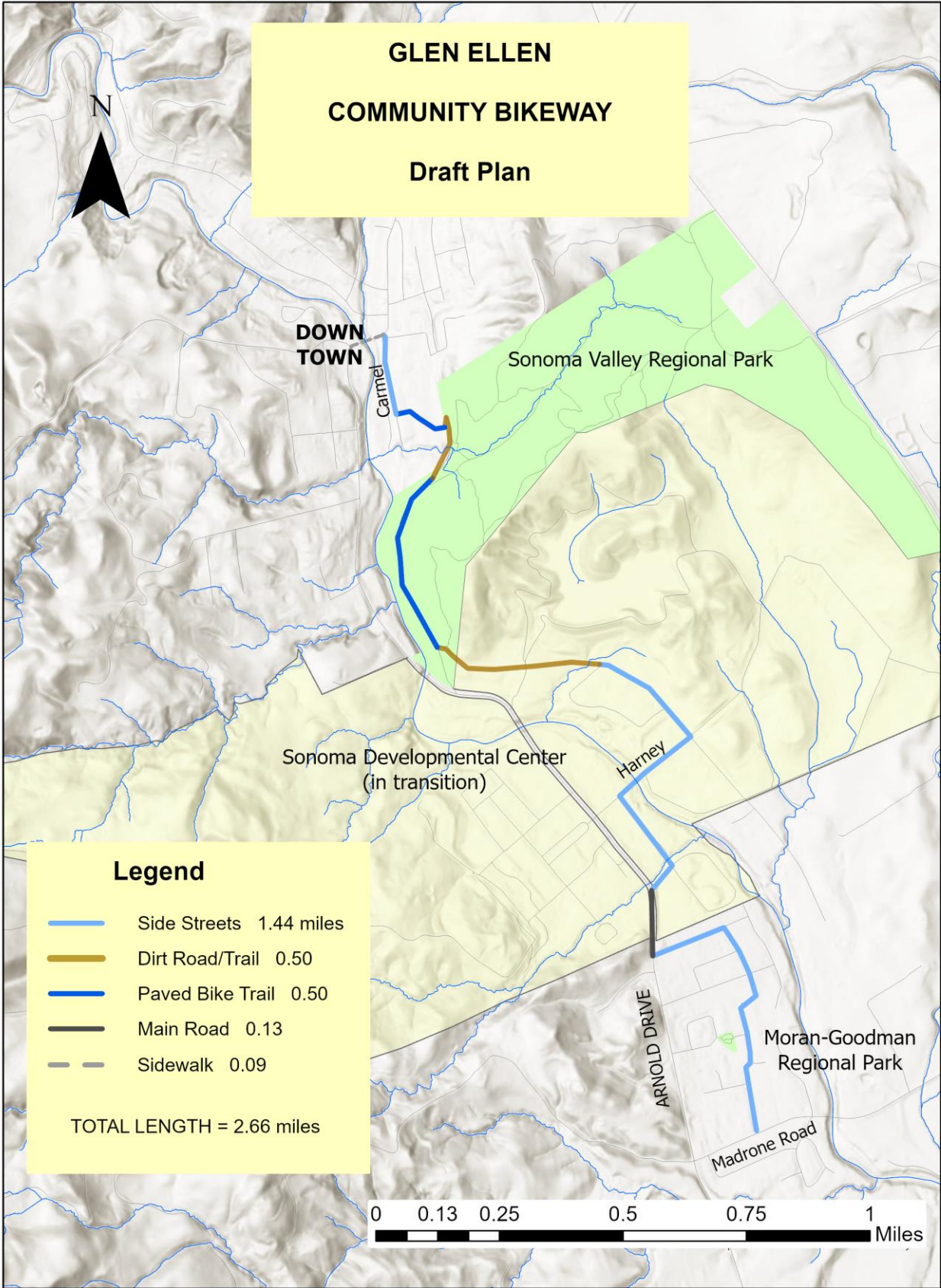
An outstanding opportunity exists to develop a community bikeway between Madrone Road and downtown Glen Ellen. The bikeway, covering nearly three miles, will link residential neighborhoods to downtown Glen Ellen, the former Sonoma Developmental Center (SDC), two Regional Parks and Jack London State Historic Park (via connecting open space above SDC). The bikeway will provide thousands of residents along the route (2020 U.S. Census) safe, non-motorized access to shopping, commuting, recreation, and transit stops. The many visitors to the area will also use the path for recreation, sight-seeing and wine tasting.

The essential elements of a “Glen Ellen Bikeway” are already in place. The proposed route (see attached map) incorporates an existing bike path on county property, a railroad grade on state property (SDC), quiet side streets, and a paved bike path on an existing easement. Except for one very short section, the bikeway avoids heavily traveled roads.

With the exception of temporary barriers on the SDC campus, the bikeway is already usable. The creation of the route will not require widening roads for bike lanes, or acquiring easements on private property. Installing signage along the bikeway would increase its visibility, while placing a crosswalk on Madrone Road would improve access for the Rancho Madrone neighborhood.

The Glen Ellen Bikeway will serve as both a stand-alone, local route, and as a link in the system connecting cities and regions envisioned in the SCTA Countywide Bicycle & Pedestrian Master Plan (2008). The terminus of the planned Central Sonoma Valley Bikeway is just over a mile from the southern end of the Glen Ellen Community Bikeway. Connecting the two would create a viable bike route all the way from the town of Sonoma to Glen Ellen. Similar large projects, such as the Bay Ridge Trail, have found success developing one short section at a time, building momentum as the linkages are slowly worked out.

**GLEN ELLEN  
COMMUNITY BIKEWAY  
Draft Plan**



**DOWN  
TOWN**

Carmel

Sonoma Valley Regional Park

Sonoma Developmental Center  
(in transition)

Harney

ARNOLD DRIVE

Moran-Goodman  
Regional Park

Madrone Road

**Legend**

- Side Streets 1.44 miles
- Dirt Road/Trail 0.50
- Paved Bike Trail 0.50
- Main Road 0.13
- Sidewalk 0.09

TOTAL LENGTH = 2.66 miles

