



# Sonoma Water

SERVING THE COMMUNITY SINCE 1949

## Mark West Area Municipal Advisory Council

Hailey Norman  
Program Specialist I

[Hailey.Norman@scwa.ca.gov](mailto:Hailey.Norman@scwa.ca.gov)

(707) 806-8650



[sonomawater.org](http://sonomawater.org)



# What We Do: Flood Control

- Maintain over 75 miles of streams throughout Sonoma County
- Manage Flood Control Projects:
  - Warm Springs Dam-Lake Sonoma
  - Coyote Valley Dam-Lake Mendocino
  - Spring Lake
  - Nathanson Creek
  - Piner Creek Reservoir
  - Brush Creek Middle Fork Reservoir
  - Spring Creek Reservoir



# What We Do: Wastewater Treatment



**Sonoma Valley  
Wastewater Treatment Plant**

- Legislation enacted in 1995 added the treatment and disposal of wastewater to the Water Agency's responsibilities.
- Collect and treat water from 30,000 homes
- Manage and operate 8 different sanitation districts and zones throughout Sonoma County.
  1. Guerneville
  2. Sea Ranch
  3. Sonoma Valley
  4. Penngrove
  5. Occidental
  6. Geyserville
  7. South Park



# What We Do: Water Supply



- Water wholesaler for 600,000 people in 9 cities and water districts in portions of Sonoma and Marin counties.
- Eighteen steel water storage tanks placed throughout the transmission system store about 129 million gallons.



# Mark West Creek Preserve

- The Mark West Creek Preserve consists of 30 acres of property split up into two parcels
  - 5 acres are north of Wikiup drive, while the remaining 25 are south, and along Mark West Creek
- This new natural park is made possible by Sonoma Water and the Ag and Open Space District





## The Future:

- Wildlife Preserve
- Walking Trail/Maintenance Road
- Educational Opportunities
- Recreational Enjoyment
- Informative Signage
- Vegetation Management

# Vegetation Management/ Mowing

Our stream maintenance program will continue to provide mowing services to address fire safety concerns.

These vegetation management plans will be posted to the Mark West Creek Preserve website on [sonomawater.org/MarkWestPreserve](http://sonomawater.org/MarkWestPreserve)



# Wildlife Preserve

This is an important wildlife corridor, many residents have reported various salmonids, river otters, foxes, and more critters that call this creek home.





# Fisheries Habitat Restoration

- Mark West Creek is one of five streams on the CA Water Action Plan for recovery needs due to its Chinook, Coho Salmon and Steelhead Trout populations
- One of the last wild Coho Salmon was found and captured in Mark West Creek and used in the Coho Broodstock Recovery program at Lake Sonoma in 2001

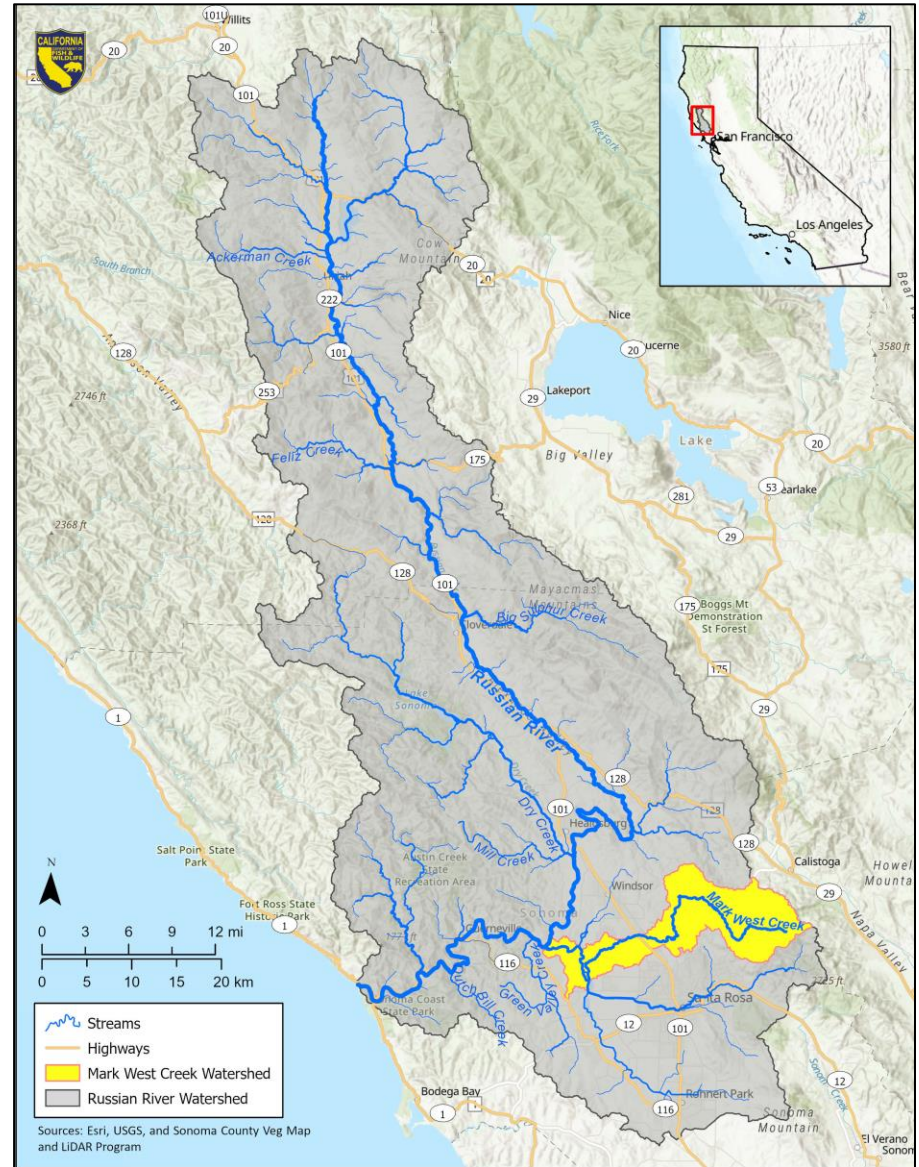


# Maps

California Water Action Plan Priority Streams



- Mainstem to Priority Stream
- Priority Streams
- Priority Watersheds



Sources: Esri, USGS, and Sonoma County Veg Map and LIDAR Program

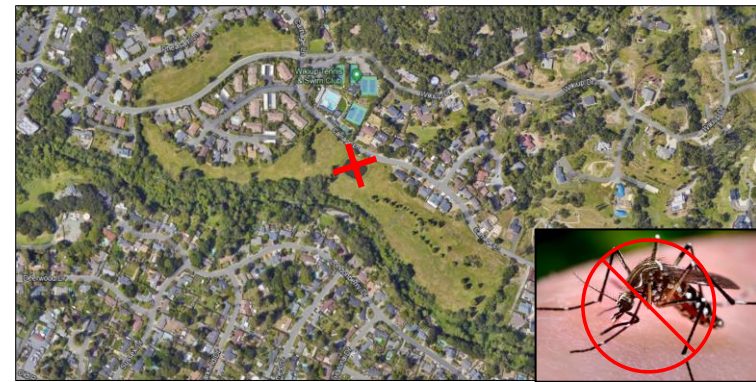


# What does the next 1-3 years look like?

- Maintenance trail
- Signage
- Continuous Mowing
- Pond Removal



Picture from Laguna de Santa Rosa Trail



Pond Removal for Mosquito Prevention



Example of Educational Signage



<https://www.sonomawater.org/MarkWestPreserve>



**Sonoma  
Water**

SERVING THE COMMUNITY SINCE 1949

**Hailey Norman**  
**Program Specialist I**  
**[Hailey.Norman@scwa.ca.gov](mailto:Hailey.Norman@scwa.ca.gov)**  
**(707) 806-8650**

    [sonomawater.org](https://www.sonomawater.org)