



**GeoZone**

An aerial photograph of a rural landscape at sunset. The foreground is dominated by rows of green vineyards on rolling hills. In the middle ground, there are fields of solar panels and some farm buildings. The background shows a valley with more fields and a small town, with mountains in the distance under a colorful sky transitioning from blue to orange.

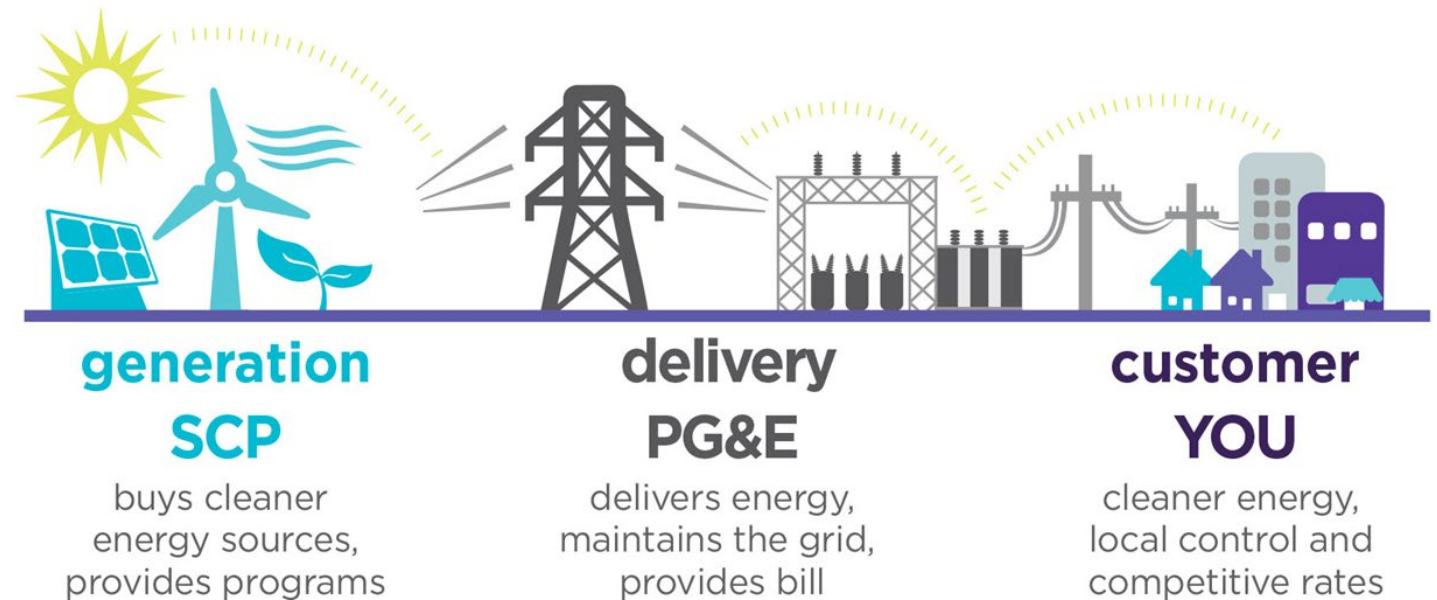
# Affordable, Reliable Clean Energy for Our Region



# Sonoma Clean Power

Community-owned  
electricity provider for  
Sonoma and  
Mendocino Counties.

Purpose is to  
**accelerate solutions  
to the climate crisis.**





Los Angeles, CA

# Exporting Our Impact & Our Dollars

Sonoma and Mendocino Counties **rely heavily on electricity from natural gas-fired power plants** in the Los Angeles area that fuel climate change, pollute local communities, and are increasingly expensive to maintain.



# Challenge

Providing clean, reliable, affordable energy at all hours of the day – even when the sun isn't shining, the wind isn't blowing, and batteries are empty.



Town of Windsor

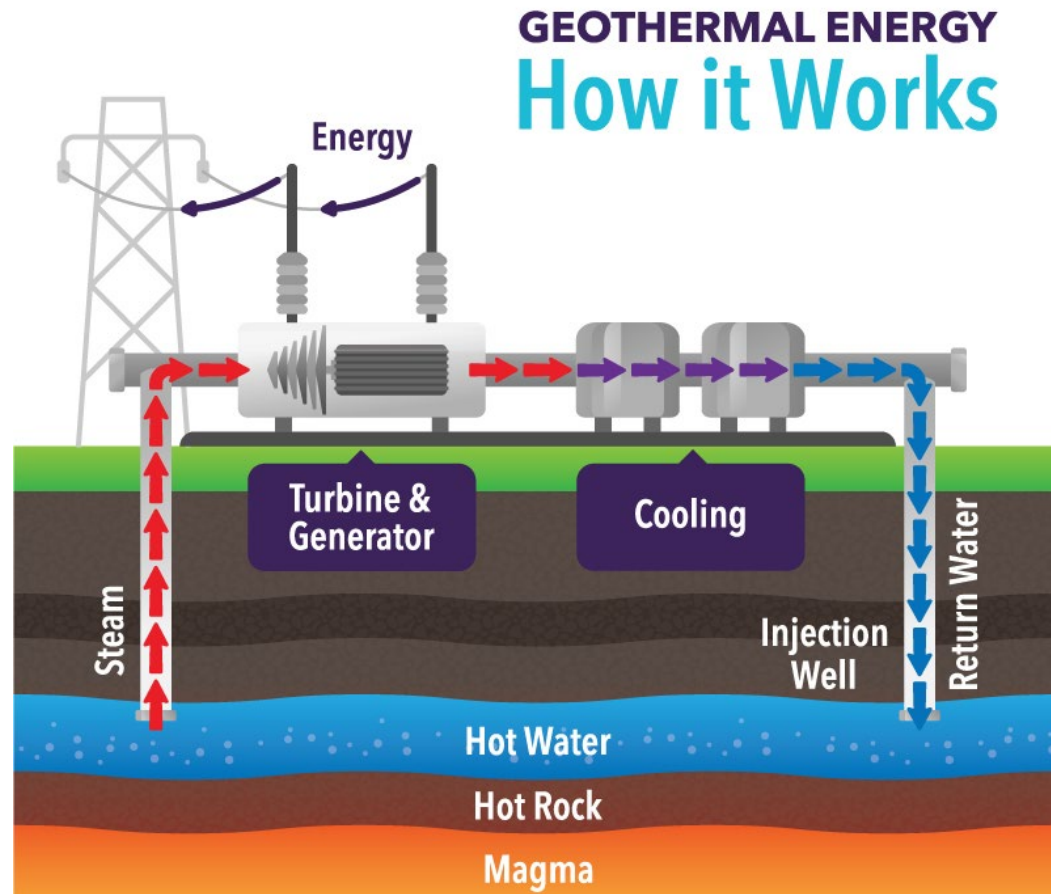


# Opportunity

Cut ties with polluting natural gas plants and **build local clean energy** here in Sonoma and Mendocino Counties to:

- Secure affordable, long-term energy supplies for our customers.
- Improve our electric reliability.
- Fight the climate crisis and innovate new geothermal technologies.
- Create good-paying, highly skilled jobs.

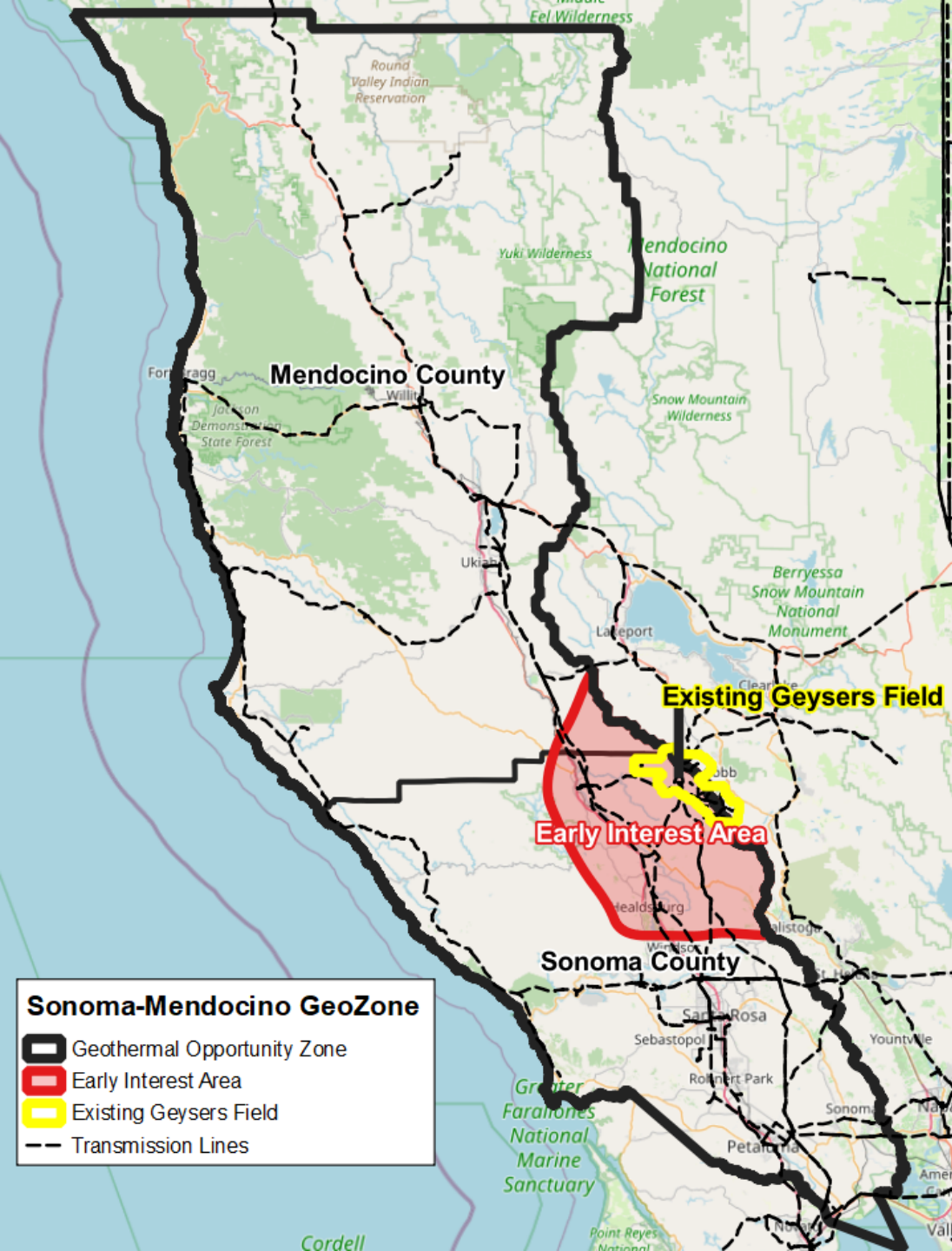
# Geothermal Power



New technologies have enabled advanced geothermal energy that uses **less water and land** than conventional methods as well as providing a **more flexible output** and operating in a **wider range of locations**.

# GeoZone Vision Statement

Secure 600 MW of new affordable, reliable clean energy for Sonoma and Mendocino County customers while helping fight global climate change and creating meaningful jobs by supporting new energy technologies.

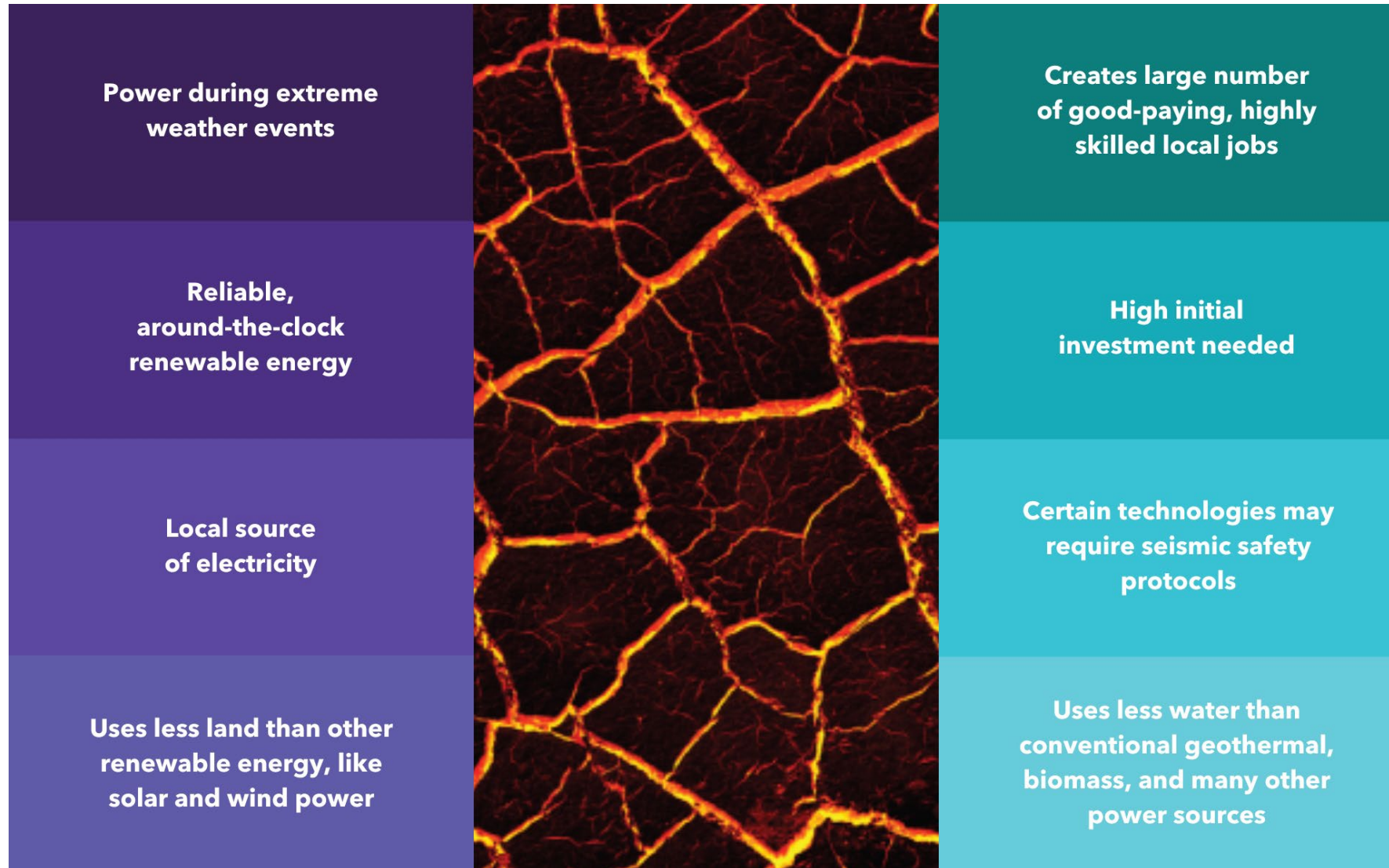




# GeoZone Partners



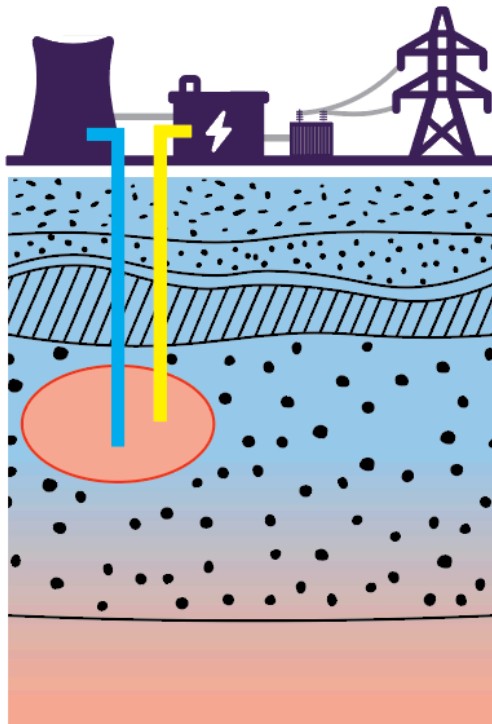
# Next-Generation Geothermal Energy



# Next-Generation Geothermal Technologies

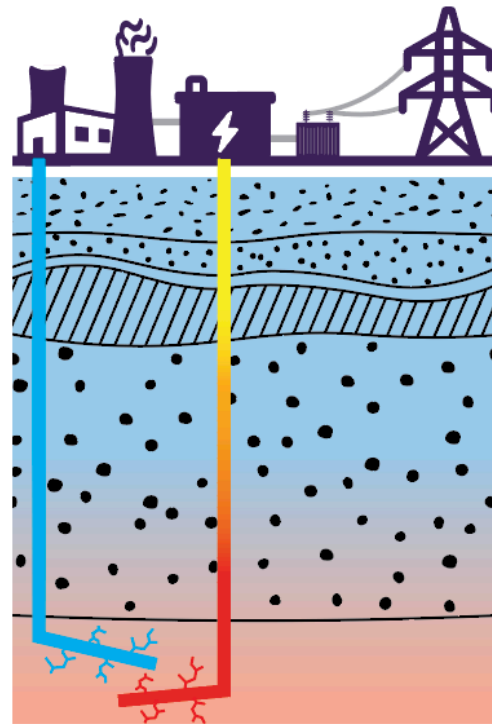
Conventional

HYDROTHERMAL

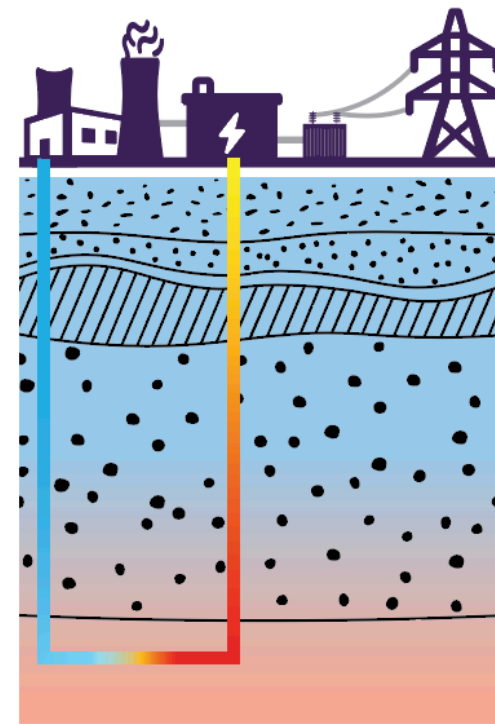


Next-Generation

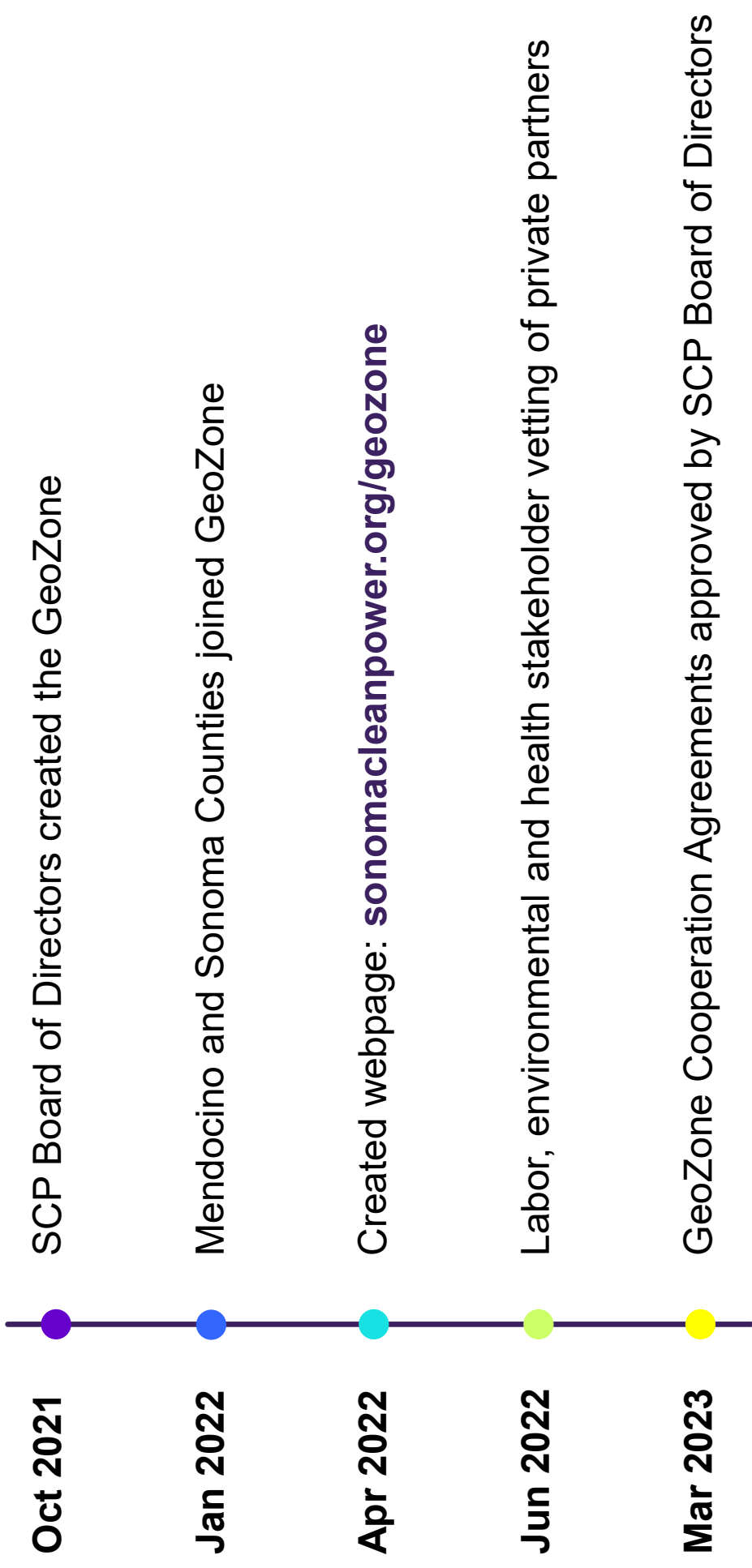
ENHANCED GEOTHERMAL SYSTEM (EGS)



CLOSED LOOP GEOTHERMAL SYSTEMS



# GeoZone Recent History Timeline



# GeoZone Initiative Progression



Public Outreach Started

Site acquisition / leasing

Calibration well permitting – public environmental review process

Grid interconnection applications

Exploration/calibration well drilling

Pilot project permitting – public environmental review process

Pilot project construction up to 20 MW each

Scale-up permitting – public environmental review process

# What We've Heard

Big projects impact local communities, but those communities don't always reap the benefits

Dollars spent by Sonoma and Mendocino County ratepayers should stay in the community

Eliminating reliance on toxic natural gas power plants is a priority

Energy costs are already too high – we need alternatives to high-cost solutions

Local people should have access to 100% renewable power at all times of day



# Thank you!

