

SONOMA COUNTY ROADS: 2017 PAVEMENT DISTRICT 5

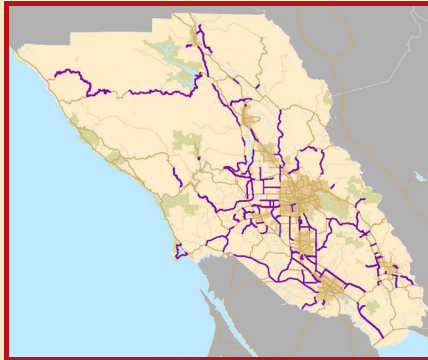
The Sonoma County Board of Supervisors (Board) recognizes that roads are a high priority to Sonoma County residents, and has dedicated local funding accordingly.

LOCAL FUNDING

Every year, the Board dedicates \$11.5 million to paving roads. In 2015, the Board approved \$10.7 million in additional one time funds.

PHASES OF 2017 CONSTRUCTION

Due to the unprecedented storms in the winter of 2016-17, and the need to coordinate with projects by other Agencies, the 2017 program has been divided into phases. Construction will kick off with 60 miles in 2017, as part of a 97 mile program approved by the Board in 2016. The remaining miles are in design and slated for construction in 2018.



5 YEAR TOTALS

From 2012 through 2017, the Board has dedicated over \$65 million local dollars to paving. This investment will contribute to paving about 300 miles of roads.

WHICH ROADS

Our Long Term Road Plan sets a path for improving Sonoma County roads. The criteria used to select roads for repair includes: average daily traffic, pavement condition, relevance to bike and bus modes of travel, and access provided to public safety facilities.

PAVEMENT SOLUTIONS

Treatments are proposed depending upon the condition of the road. Seals typically preserve decent roads, Overlays repair surface damage, and Full Depth Reclamations are used when the foundation of a road has failed.

Fog Seal: light application of asphalt emulsion.

Slurry Seal: a mixture of asphalt emulsion and gravel.

Chip Seal: layers of asphalt emulsion and fine gravel.

Asphalt Overlay: complete asphalt road surface laid over repaired roads.

Remove and Replace: existing surface is removed and replaced with asphalt.

Cold In-Place Recycling: remove four inches of pavement, mix and place it back on the road, then top it with new asphalt.

Full Depth Reclamation: pulverize the existing pavement, mix in cement, compact the road base, and place a new asphalt surface.

2017 CONSTRUCTION

Road Name	Length	Description	Proposed Treatment
Cazadero Highway	3.24	Highway 116 to Austin Creek Road	Full Depth Reclamation
Ludwig Avenue	0.94	Llano Road to South Wright Road	Chip Seal
Mill Station Road	2.16	Occidental Road to Highway 116	Chip Seal
Occidental Road	4.41	Highway 116 to Santa Rosa City Limits	Slurry Seal
River Road	5.15	Bridge to Trenton Road	Slurry Seal
Watertrough Road	1.72	Pleasant Hill Road to Bodega Highway	Chip Seal
Bodega Highway	1.96	Bodega Highway from Sexton Road to Sebastopol	Overlay

IN THE WORKS

Annapolis Road	11.71	Twin Bridges to Stewarts Pt Skaggs Springs Rd
Bohemian Highway	5.00	Graton Road to Main Street
Ferguson Road	4.81	Bodega Highway to Mill Station Road
Furlong Road	1.31	Bodega Highway to Occidental Road
Stewarts Pt Skaggs Springs Rd	1.73	Annapolis Road to P.M. 21.6

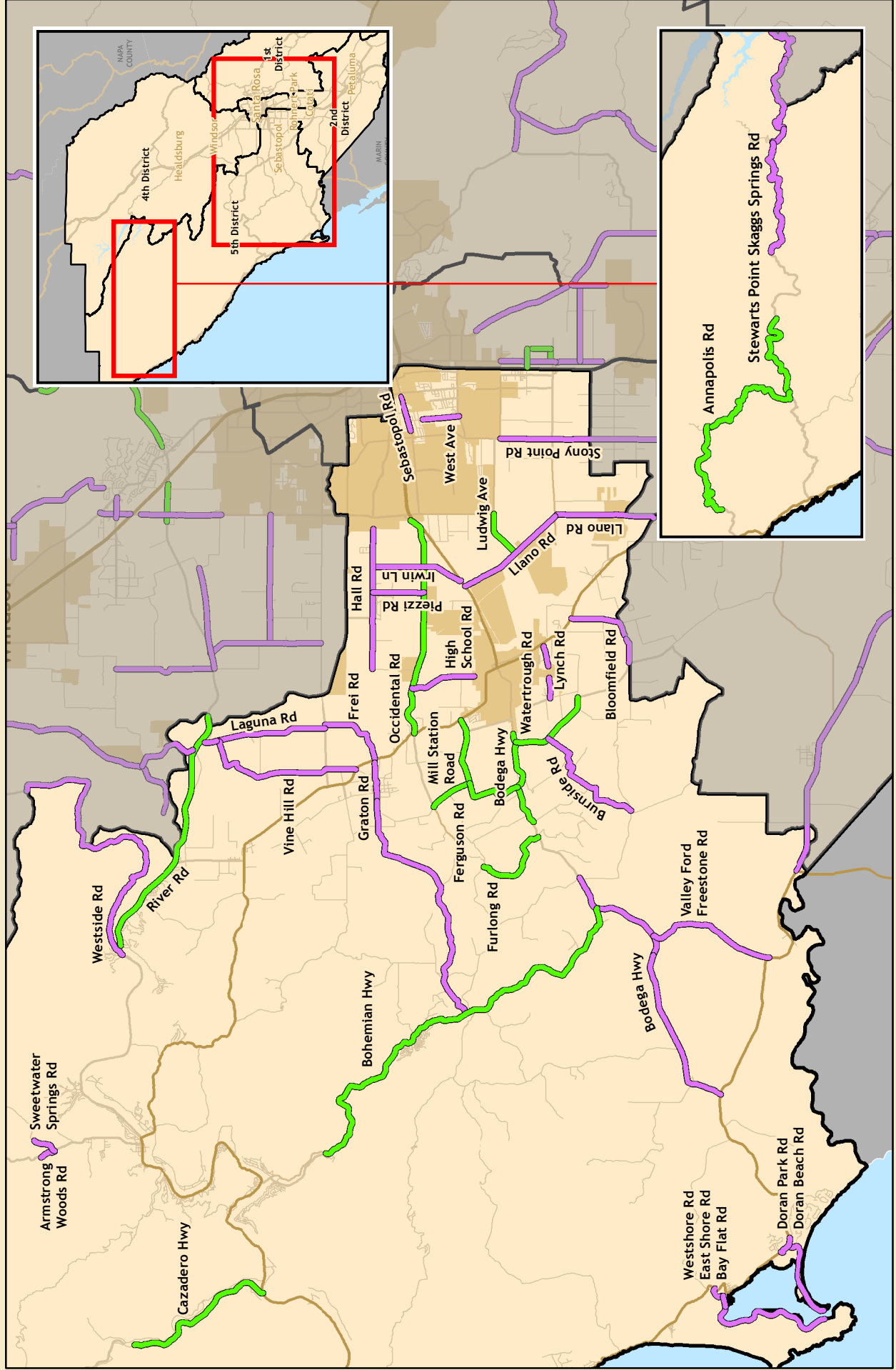
MORE INFORMATION

Please visit <http://sonomacounty.ca.gov/TPW/Projects/Current-Paving/> for more information. We will post updates when construction is scheduled. For additional questions please contact Transportation and Public Works at 707-565-2231 or Lynda Hopkins' office at 707-565-2241 or Lynda.Hopkins@sonoma-county.org.

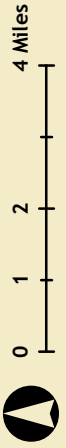


PAVEMENT PLANS & CONSTRUCTION

DISTRICT 5, 2017



TPW Road Paving Projects



Completed Projects (2013-2016) 2017 Program