

# Wilshire-Crystal-Heights Neighborhood Fire-Risk Reduction Grant

Mark West Citizens Advisory Council

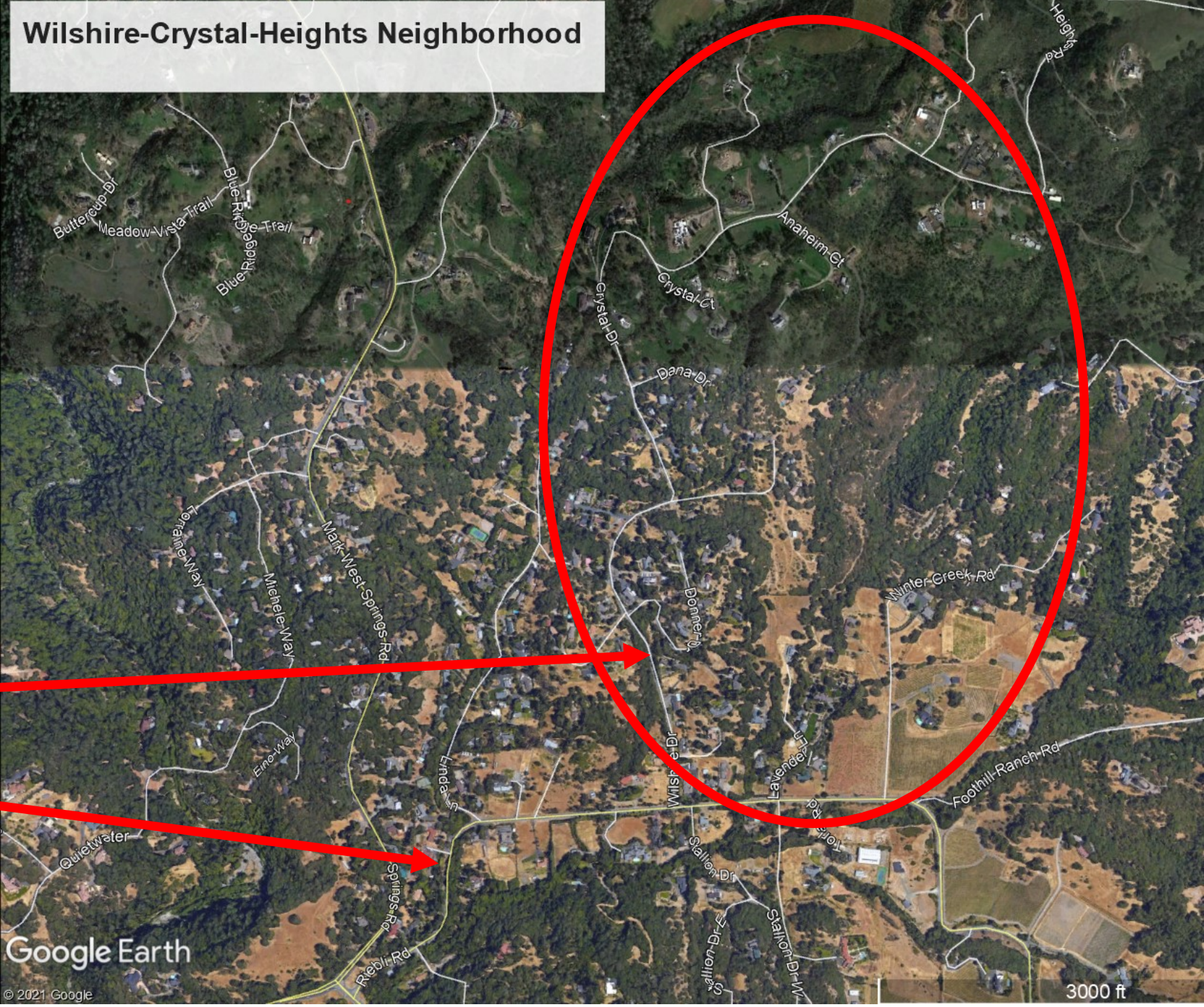
July 14, 2021

**Wilshire-Crystal-Heights Neighborhood**

Neighborhood is located off Reibli Road, in footprint of the Tubbs and Hanley fires

**Wilshire Drive**

**Reibli Road**



About 65% of the 100+/- homes are being rebuilt. Many properties are in limbo.



Applied for a grant to remove vegetation within 15-20 feet of pavement on public & private roads

Project goals: To create safer emergency egress, to reduce roadside fire risk and to widen existing fuel break.



31 properties initially identified with overgrown vegetation and invasive species.



Total project budget is \$115,010, of which \$8,550 was neighborhood or county match.

### **Project components:**

June/July 2021

- Remove heavy vegetation using masticator and large equipment
- Follow-up with Circuit Rider crew to remove vegetation near fences and to limb up trees

Spring 2021

- Maintenance of space through two neighborhood work weekends and two weeks of a Circuit Rider crew

# Biggest challenge is working one-on-one with neighbors



Biggest benefit is working one-on-one with neighbors





# Next steps include a broader discussion about removing fire fuels other areas



## **Challenges:**

- Understanding best practices
- California Environmental Quality Act analysis required
- Project costs are high
- Private landowner cooperation/legal documentation needed

Questions?